

Missoula County Control Point Datasheet

Monument Description: 2-1/2" Aluminum Cap 8249S

Project Name: O'Brien

Station Description: 1/4 Corner

Date Visited: Jan. 04, 2006

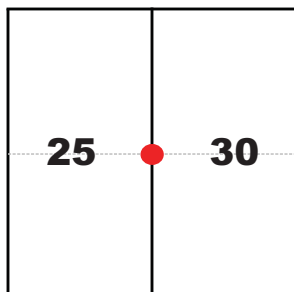
Monument Stability: D GPS Visibility: D

Observer: SEN

Quad. Name: Blue Mountain

T. 13 N.

R. 21 W. R. 20 W.



NAD 83 (2007) Lat/Long Position

46°51'19.686"N

114°11'12.148"W

NAVD 88 Elevation: 4099.6 sft.

Notes:

Photo of Monument

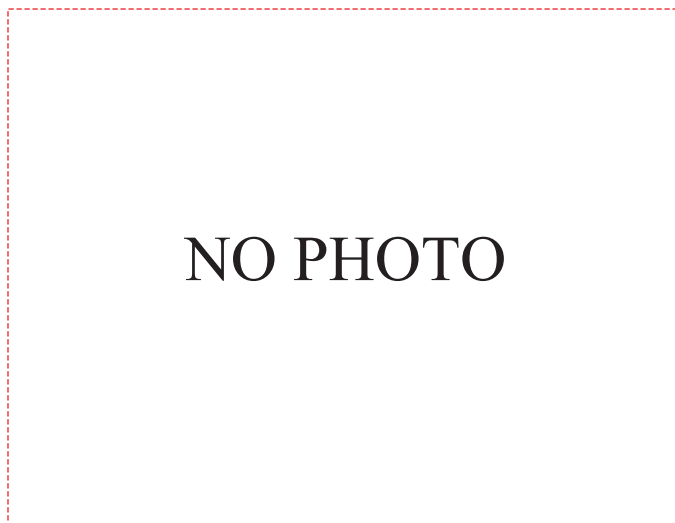
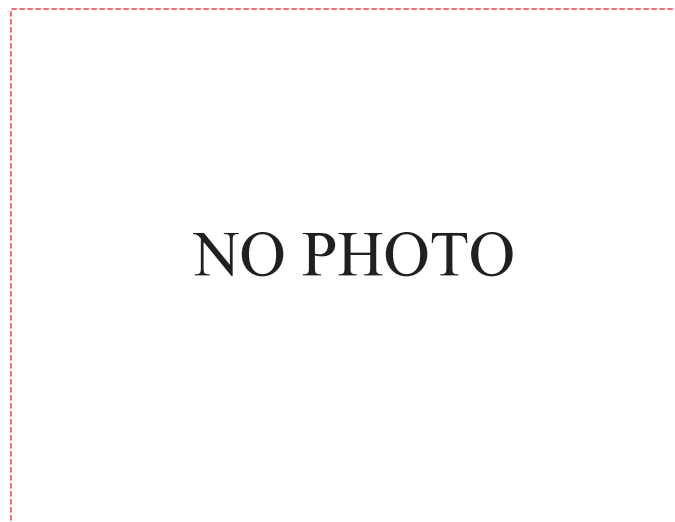
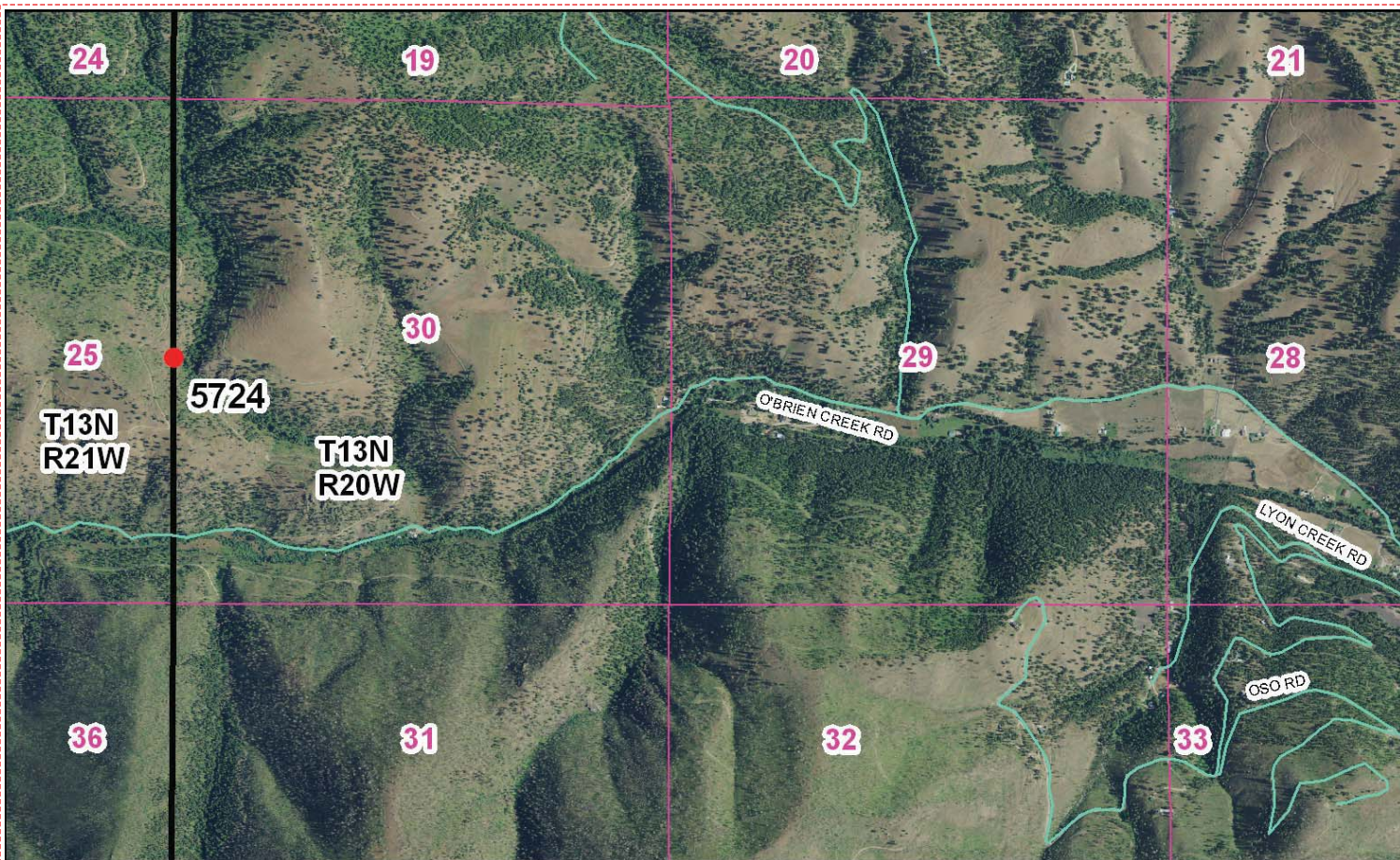


Photo Looking



To Reach: 2wd access to within 90 feet of monument in the summer, need key from Pickering.



Map of Area

- INSTRUCTIONS**
1. Original and/or subsequent record used to evaluate the corner position.
 2. Description of evidence found, note discrepancies in the record, state method of establishing lost or obliterated corners.
 3. Sketch of corner, show all pertinent data which can best be shown in a sketch example, corner marking, accessories, etc.
 4. Sketch of corner, show all pertinent data which can best be shown in a sketch example, corner marking, accessories, etc.
 5. Certification must be signed and sealed by Land Surveyor registered in the State of Montana.
 6. Fill in Corner Index & Section Diagram at bottom of sheet.

CERTIFIED CORNER RECORDATION

1/4 Corner Sections 25 & 30 T. 13 N. R. 20 & 21 W. P.M., M. Missoula County, MT

RECORD #1: (October 28, 1879) G. L. O. survey by James M. Page "Set a sandstone 16x7x6 ins. 11 ins. in the ground for 1/4 Sec. Cor. marked 1/4 on W. face from which A Pine 7 ins. diam. bears S 21 3/4° E. 54 lks. dist. marked 1/4 S. B. T. A double Fir 10 ins. diam. bears N 43° W 47 lks. dist. marked 1/4 S. B. T."

RECORD #2: (July 6, 1994) Corner Recordation Document, Micro. Bk. 418 Pg. 1475, surveyor Michael P. LeJeune 8249S He found the southeast bearing tree and roited fir stump at record course from the corner position and set a 2-1/2" aluminum cap. He established one new bearing tree, a 9" Fir bears S6°W, 14.6 feet, scribed 1/4 S25 BT.

FOUND (January 5, 2006) I found the 2-1/2" aluminum cap, the new bearing tree from Record #2, a 10" Douglas Fir bears S6°W, 14.3 feet, and the southeast bearing tree from Record #1. The southeast bearing tree is a dead standing 12" P. Pine with overgrown face and location tag.

SET (January 5, 2006) I left the aluminum cap in place and established one new bearing tree. A 10" Douglas Fir bears S40°E, 26.7 feet, scribed RM, with location tag affixed.

NAD 83 (1999) Lat. Lon. NAD 83 (1999) SPC Intl. Ft. Positional information determined by static GPS observations, with ties to the NSRS, using GEOID 2003 for elevation.

984918.2 N
114°11'12.148" W
797298.3 E
Missoula Co. GPS #5724

CERTIFICATION MONTANA

I, Steve Niday, certify the information shown hereon is true and correct.

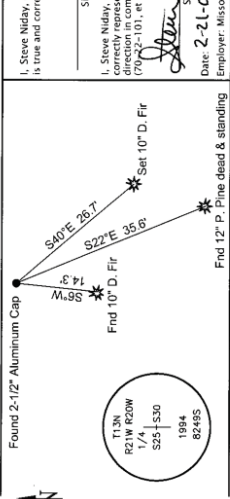
STEVE NIDAY
10098LS
REGISTERED SURVEYOR

N/A
Signature Ground Reference Point

I, Steve Niday, certify that this Corner Recordation Document correctly represents work performed by me or under my direct supervision in compliance with the "Corner Recordation" provisions of the Montana Code Annotated, 82-2-101, et seq., M.C.A.

Steve Niday
Signature of Surveyor & Seal

Date: 2-21-08 Reg. No. 1098LS
Employer: Missoula County Public Works, Surveyor's Office



Section 25 • 30

T-25 T. 13 N., R. 21 W. • corner this sheet
Cross Index No. T-1 T. 13 N., R. 20 W. P.M.M.

200803135
Missoula County Public Works
Missoula County Clerk & Recorder
BK-813 Pg-830

Office of Clerk and Recorder, County of Missoula, Recording Information.

Corner Recordation Form or Other Supporting Document