

Missoula County Control Point Datasheet

Monument Description: 1-1/2" Copperweld No I.D., with Punch Mark

Project Name: ALL

Station Description: Section Corner

Date Visited: June 28, 2010

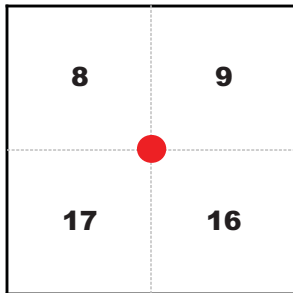
Monument Stability: D

GPS Visibility: A+

Observer: SEN - CLG

Quad. Name: Primrose

T. 13 N. R. 20 W.



NAD 83 (2007) Lat/Long Position

46°53'31.675"N

114°08'41.620"W

NAVD 88 Elevation: 3115.4 sft.

Notes:

Monument is located on private property, need permission. Old bridge shown on corner recordation form is no longer usable.

Photo of Monument



Photo Looking North

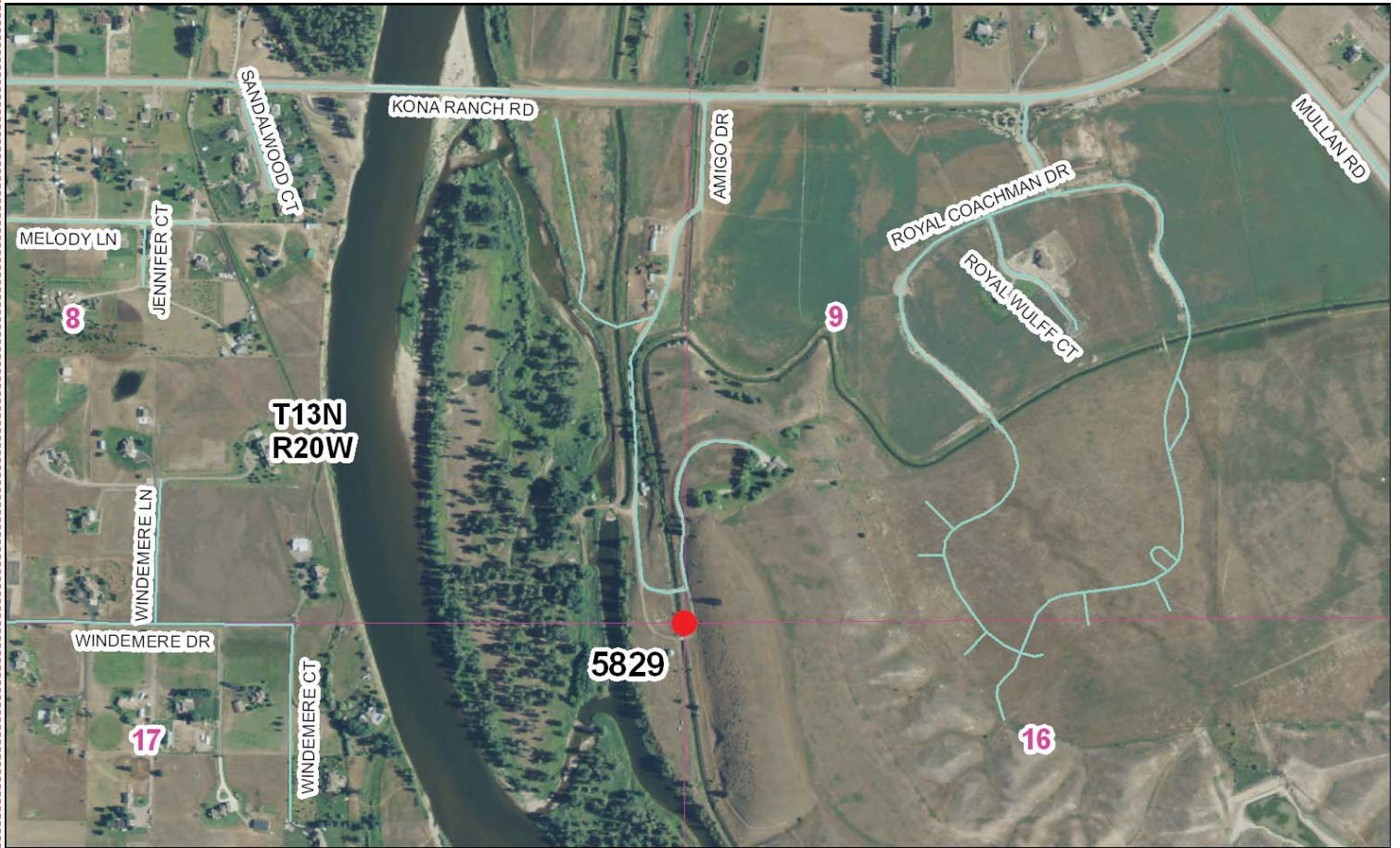


Photo Looking Southwest



Point # 5829

To Reach: 2wd access, monument is south of switchback in Amigo Drive.



Map of Area

CERTIFIED LAND CORNER RECORDATION

DESCRIPTION OF CORNER EVIDENCE FOUND, AND ORIGINAL RECORD (IF KNOWN)
 At the section corner of Sections 8, 9, 16, and 17, Township 13 North, Range 20 West, Principal Meridian, Montana, Missoula County, Montana.

RECORD: Resurvey record for found copperweld monument unknown.

WE FIND: A copperweld monument, unmarked, set in mound of stone. This corner position has been used by several surveyors over the past few years and I accept its position.

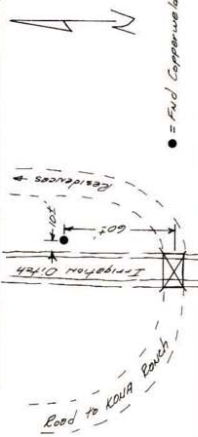
DESCRIPTION OF MONUMENT AND ACCESSORIES ESTABLISHED TO PERPETUATE THE ORIGINAL LOCATION OF THIS CORNER:

Date of work: 2-3-77

TO PERPETUATE THIS CORNER WE set a fence post east and west 1.0 feet.

See Certificate of Survey No. 1159

SKETCH, WITH COURSE AND DISTANCE TO ADJACENT CORNERS IF DETERMINED IN THIS SURVEY.
 (MAY SKETCH OR PASTE REPRODUCTION ON REVERSE SIDE.)



● = Found Copperweld Monument.

Surveyor's Seal: MONTANA ROBERT S. CUSTER 33255 MISSOULA COUNTY REGISTERED SURVEYOR

I, Neil A. Bratton, Jr., certify that the information shown herein is true and correct. *Neil A. Bratton, Jr.*
 Signature of Ground Party Chief

I, Robert S. Custer, certify that I have carefully performed or reviewed the work done on the diagrammed corner as reported on this recordation form and approve the same. *Robert S. Custer*
 Signature of Surveyor

DIAGRAM OF CORNER:
 T13N R20W
 Found Monument

Legend:
 1.0' West
 1.0' East
 = Set Steel Fence Post
 = Corner recorded on the sheet

Registration Number: 41244

Office of Clerk and Recorder, County of Missoula
 This "corner record" was filed for record on the 16th day of June, 1977, was noted on the cross-index plat and is assigned page No. 345-11A, in book No. 125.
 By: *Roberta Healy*, County Clerk
 Cross Index No. 3-9 T. 13N R. 20W Mer.

Corner Recordation Form or Other Supporting Document