

# Missoula County Control Point Datasheet

Monument Description: 2" Brass Cap MSLA CO

Project Name: ALL

Station Description: Quarter Corner

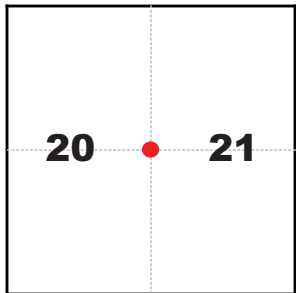
Date Visited: June 24, 2010

Monument Stability: C+      GPS Visibility: C+

Observer: SEN - CLG

Quad. Name: Blue Mountain

T. 13 N. R. 20 W.



### NAD 83 (2007) Lat/Long Position

46°52'13.519"N

114°08'41.429"W

NAVD 88 Elevation: 3681.9 sft.

Notes:



Photo of Monument



Photo Looking North

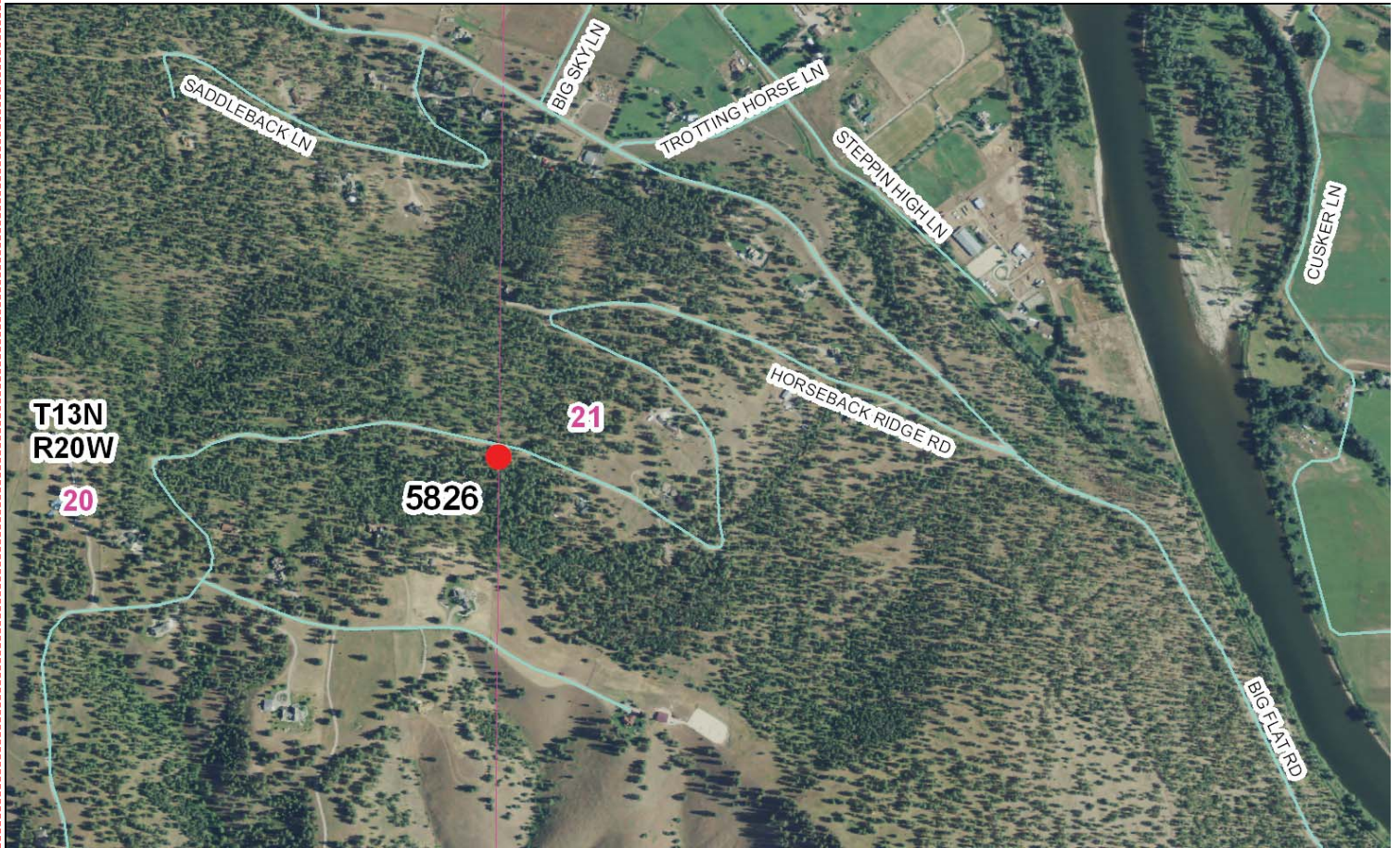


Photo Looking South



Point # 5826

**To Reach:** 2wd, monument is 50 feet south of Horseback Ridge Road on private property.



Map of Area

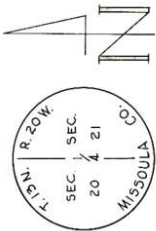
**CERTIFIED LAND CORNER RECORDATION**

**DESCRIPTION OF CORNER EVIDENCE FOUND, AND ORIGINAL RECORD (IF KNOWN)**

(Record) 10.08 chains. Set a sandstone 15 x 12 x 4 ins., 10 ins. in the ground for 1/4 Sec. Cor. marked 1/4 on W. face from which a pine 30 ins. diam. bears S 41° E, 252 lks. dist. marked 1/4 S.B.T. A pine 30 ins. diam. bears S 81° W, 290 lks. dist. marked 1/4 S.B.T. (Found) stone 13 x 12 x 4 inches - 8 inches in ground; scribed 1/4 on west face (stone appears to have top broken off) Found 1 1/2" pine which bears S 60° W, a distance of 5.5 feet, 4.5 feet above ground X blazed on N. E. face. No scribbling readable. No evidence of original trees found.

**DESCRIPTION OF MONUMENT AND ACCESSORIES ESTABLISHED TO PERPETUATE THE ORIGINAL LOCATION OF THIS CORNER:**

Date of work: Oct. 21, 1971



Note 1/2" stones placed beside Brass Cap  
 2 1/2" DIA. PONDEROSA PINE MARKED R.M.  
 50.00' (from top of stone)  
 12" DIA. PONDEROSA PINE MARKED R.M.

Set 2" Galvanized pipe with Brass Cap SKETCH, WITH COURSE AND DISTANCE TO ADJACENT CORNERS IF DETERMINED IN THIS SURVEY. (MAY SKETCH OR PASTE REPRODUCTION ON REVERSE SIDE.)

Surveyor's Seal



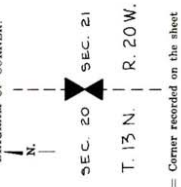
I, Lawrence D. Rosenbaum, certify that the information shown herein is true and correct.

*Lawrence D. Rosenbaum*  
 Signature of Ground Party Chief

I, Donald L. Ebbutt certify that I have carefully performed or reviewed the work done on the diagrammed corner as reported on this recordation form and approve the same.

*Donald L. Ebbutt*  
 Signature of Surveyor

**DIAGRAM OF CORNER:**



**309189**

3326-S  
 Registration Number

Office of Clerk and Recorder, County of Atchison, Mo.  
 This "corner record" was filed for record on the 3rd day of Nov., 1971, was noted on the cross-index plat and is assigned page No. \_\_\_\_\_ in book No. \_\_\_\_\_  
 Fee 47.50 \$  
 County official Shirley R. Crouse  
 Cross Index No. 12-9 T. 13 N. R. 20 W.

**Corner Recordation Form or Other Supporting Document**