

# Missoula County Control Point Datasheet

Monument Description: 2" OD IP w/ 2-3/4" Coupling w/ Boat Spike

Project Name: All & Hwy 12 Walkway

Station Description: 1/4 Corner

Date Visited: Mar 4, 2010

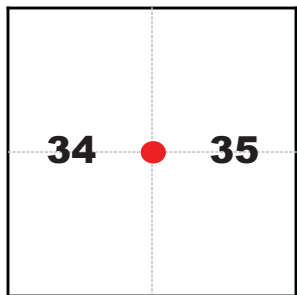
Monument Stability: C+

GPS Visibility: C-

Observer: SEN - CLG

Quad. Name: Southwest Missoula

T. 12 N. R. 20 W.



## NAD 83 (2007) Lat/Long Position

46°45'17.000"N

114°05'13.117"W

NAVD 88 Elevation: 3189.2 sft

## Notes:

IP = Iron Pipe

Photo of Monument



Photo Looking Northeast



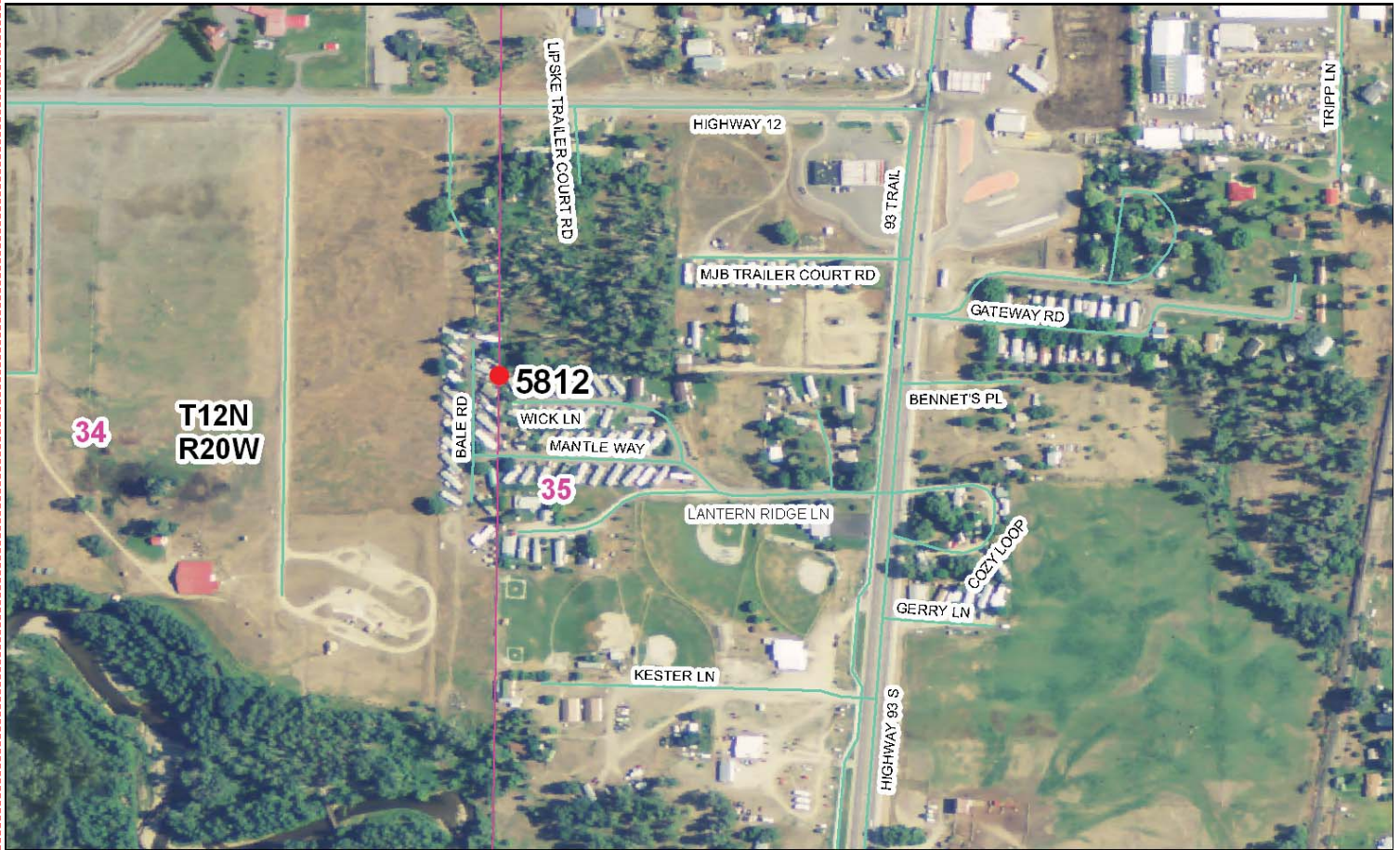
Photo Looking Southeast



Photo Looking Southwest



**To Reach:** 2wd access to within 80 feet. The monument is located in a trailer park, in the NW corner of the yard for the trailer addressed as #53.



Map of Area

**CERTIFIED LAND CORNER RECORDATION**

**DESCRIPTION OF CORNER EVIDENCE FOUND, AND ORIGINAL RECORD (IF KNOWN)**

RECORD: Post, pits, 24" pine, S2°E, 12.54'

Original Corner not found.

"Found 2" O.D. pipe with screened-on cap or coupling, diam. = 2 3/4", up 4", west side of fence post at the west end of new chain link fence is 8" east of monument. This monument has been in present location and has been recognized as NW corner of SW<sub>4</sub>, according to Fred Kester, Resident since 1939."

The above is from a Dead Exhibit prepared by me and dated June 2, 1965, for a 1.895-acre parcel of land sold by Kester to Bagley in 1965.

**DESCRIPTION OF MONUMENT AND ACCESSORIES ESTABLISHED TO PERPETUATE THE ORIGINAL LOCATION OF THIS CORNER:**

Date of work: June, 1965

Nothing was done to further perpetuate the existing found monument.

**SKETCH, WITH COURSE AND DISTANCE TO ADJACENT CORNERS IF DETERMINED IN THIS SURVEY. (MAY SKETCH OR PASTE REPRODUCTION ON REVERSE SIDE.)**

For reference elsewhere, see Certificate of Survey No. 25.

**DIAGRAM OF CORNER:**

T12N R20W  
N. S34 S35

Surveyor's Seal

I, \_\_\_\_\_, certify that the information shown herein is true and correct.

Signature of Ground Party Chief

I, Richard Bard, Jr.,

certify that I have carefully performed or reviewed the work done on the diagrammed corner as reported on this recording form and approve the same.

Signature of Surveyor

1056 S  
Registration Number

413246

Office of Clerk and Recorder, County of Massena  
12:40 P.M.  
This "corner record" was filed for record on the 1st day of March, 1978, was noted on the cross-index plat and is assigned page No. 5060

in book No. \_\_\_\_\_ County Official  
ROSEITA FRANK, County Clerk Cross Index No. X-17 T. 12N R. 20W P. 5060  
By: Richard A. Bard DEPUTY

FORM 125

**Corner Recordation Form or Other Supporting Document**