

Missoula County Control Point Datasheet

Monument Description: 3-1/4" Aluminum Cap 2532S

Project Name: ALL

Station Description: Closing Corner

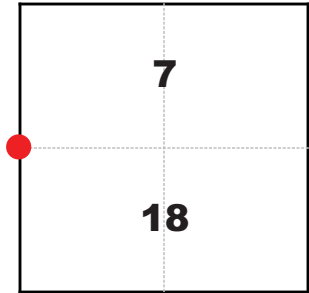
Date Visited: July 20, 2010

Monument Stability: C GPS Visibility: B+

Observer: SEN, CLG

Quad. Name: Blue Mountain

T. 12 N. R. 20 W.



NAD 83 (2007) Lat/Long Position

46°48'19.707"N

114°10'16.102"W

NAVD 88 Elevation: 5536.4 sft.

Notes:

Monument is under a high voltage power line.

Photo of Monument



Photo Looking East

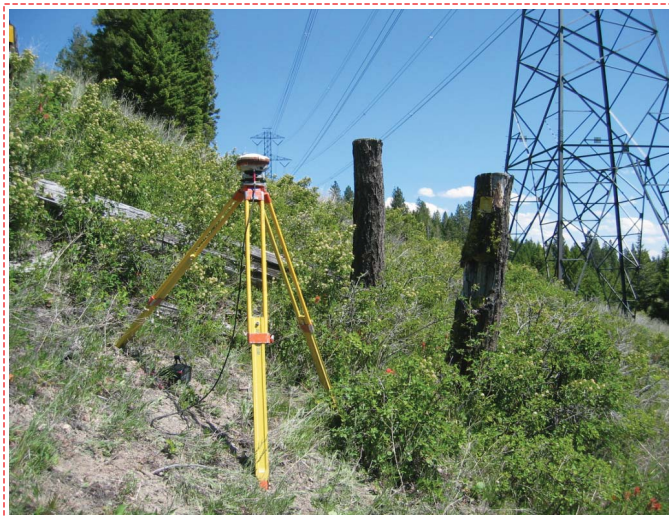
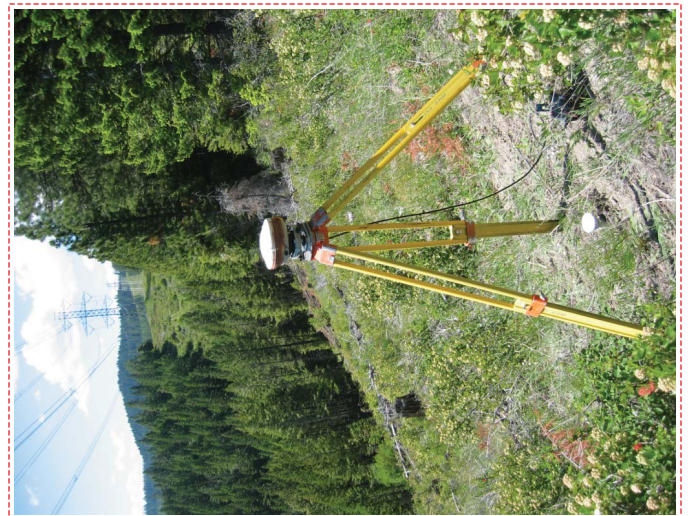
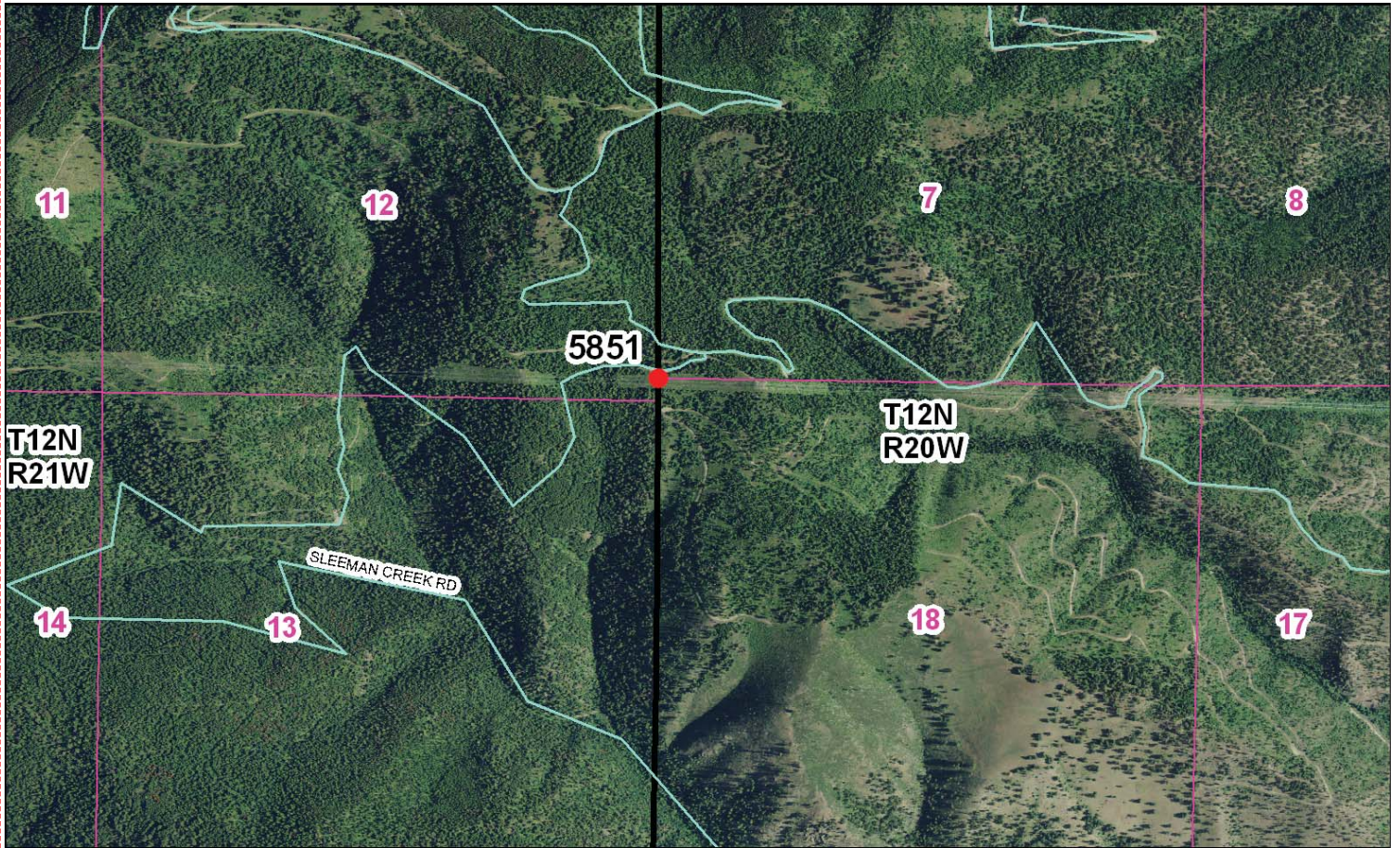


Photo Looking West



Point # 5851

To Reach: 2wd access via a power line access road, need Plum Creek key.



Map of Area

61-7190-1

CERTIFIED LAND CORNER RECORDATION
(REFERENCE FSM 715.5-53)

DESCRIPTION OF CORNER EVIDENCE FOUND, AND ORIGINAL RECORD (IF KNOWN)

Found no evidence of corner monument.
 (RECORD) Set a fir post 3 ft. long, 4 ins. square, 24 ins. in the ground for closing cor. of secs. 7 and 18 marked "CC 7/24, R20W" on E., "5.7" on N., and "5.8" on S., with 4 grooves on S. and 2 on N.
 Found a 16-in. fir bears N. 63° E., 23 lks. (15.18 ft.), blaze on tree but no scribing visible.
 (RECORD) An 8-in. fir bears N. 80° E., 15.18 ft., scribed "T12N R20W 5/18".
 Found a 15-in. fir bears S. 41° E., 13 lks. (8.58 ft.), scribed "5/8".
 (RECORD) An 8-in. fir bears S. 30° E., 8.58 ft., scribed "T12N R20W 5/18 BT".

DESCRIPTION OF MONUMENT AND ACCESSORIES ESTABLISHED TO PERPETUATE THE ORIGINAL LOCATION OF THIS CORNER:

Using C.L.O. record distances from the BT's, we set a standard USDA aluminum pipe with 3/8-in. diam. aluminum cap 7 ins. above ground marked as above:

We posted BT signs on the BT trees. Placed an Attention sign and Land Survey Monument sign near cor. Painted blazes red.

Date of work: 10/4/79



SKETCH, WITH COURSE AND DISTANCE TO ADJACENT CORNERS IF DETERMINED IN THIS SURVEY.
 (MAY SKETCH OR PASTE REPRODUCTION ON REVERSE SIDE.)

Surveyor's Seal:

I, MARK S. KILDOW R. L. BENTON certify that the information shown herein is true and correct.

Signature of Ground Party Chief: Stanley J. Skousen

I, STANLEY J. SKOUSEN certify that I have carefully performed or reviewed the work done on the diagrammed corner as reported on this recordation form and approve the same.

Signature of Surveyor: Stanley J. Skousen

DIAGRAM OF CORNER:
 N.
 = Corner recorded on the sheet

2532S Registration Number **484548**

Office of Clerk and Recorder, County of Missoula
 This "corner record" was filed for record on the 7 day of January, 1979, was noted on the cross-index plat and is assigned page No. 5304 in book No. 5304 P.M.M.
 Cross Index No. 12 N. R. 20 W. Mer.

Corner Recordation Form or Other Supporting Document