

INSTRUCTIONS

1. Original and/or subsequent record used to evaluate the corner position.
2. Description of evidence found, note discrepancies in the record, state method of establishing lost or obliterated corners.
3. Description of monument and accessories set to perpetuate the corner position.
4. Sketch of corner, show all pertinent data which can best be shown in a sketch example, corner marking, topography ties, position of accessories, etc.
5. Certification must be signed and sealed by Land Surveyor registered in the State of Montana.
6. Fill in Cross Index & Section Diagram at bottom of sheet.

CERTIFIED CORNER RECORDATION

Corner 1/4 Sections 25 & 30 T. 9N R. 9 & 10W P.M.M. Powell County

ORIGINAL RECORD: (1868 G.L.O.) Set 1/4 sec cor a post in mound of earth with pits charred stake as per instructions at foot of hill.

SUBSEQUENT RECORD: None

EVIDENCE FOUND: Searched and found nothing.

PERPETUATION: Set 2 1/2 ins. alum. cap on 3/4 x 30 in. rebar, marked as shown, at the single proportion position. Placed a steel fence post 1 ft. north of monument. Fence post East 1.8 ft. and fence post N4°W 85.3 ft, both with BT tags.

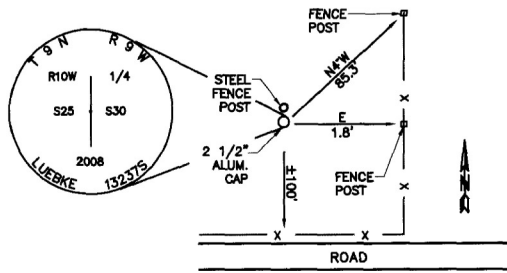
The corner is on flat and grassy slope.

Date of Survey: April, 2008.

Compass Declination Used: 15°

SEE REVERSE SIDE FOR SECTIONAL DATA

NAD 83 coordinates for this corner:
 Latitude = 46°30'19.09614"N Longitude = 112°47'13.95615"W
 NOTE: These coordinates are to be used as a search tool only.



(Not to Scale)
 SKETCH OF CORNER

CERTIFICATION
 I, John Shirey
 certify the information shown herein is true and correct.
 Signature Ground Party Chief
 I, Kurt A. Luebke
 certify that this Corner Record correctly represents work performed
 by me or under my direction in compliance with the "Corner
 Recordation Act" (70-22-101 et seq., M.C.A.)
 Signature of Surveyor & Seal
 Date: 6-19-2008 Reg. No. 13237 S
 Employer: DJ&A P. C.

Office of Clerk and Recorder, County of Powell. This "corner

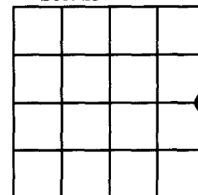
record" was filed **162223 Fee: \$0.00 Bk Pg**

was noted on the POWELL COUNTY Recorded 6/27/2008 At 11:35 AM
Diane S. Grey, Clk & Rcdr By Diana Beckel, in

book No. _____ County Official

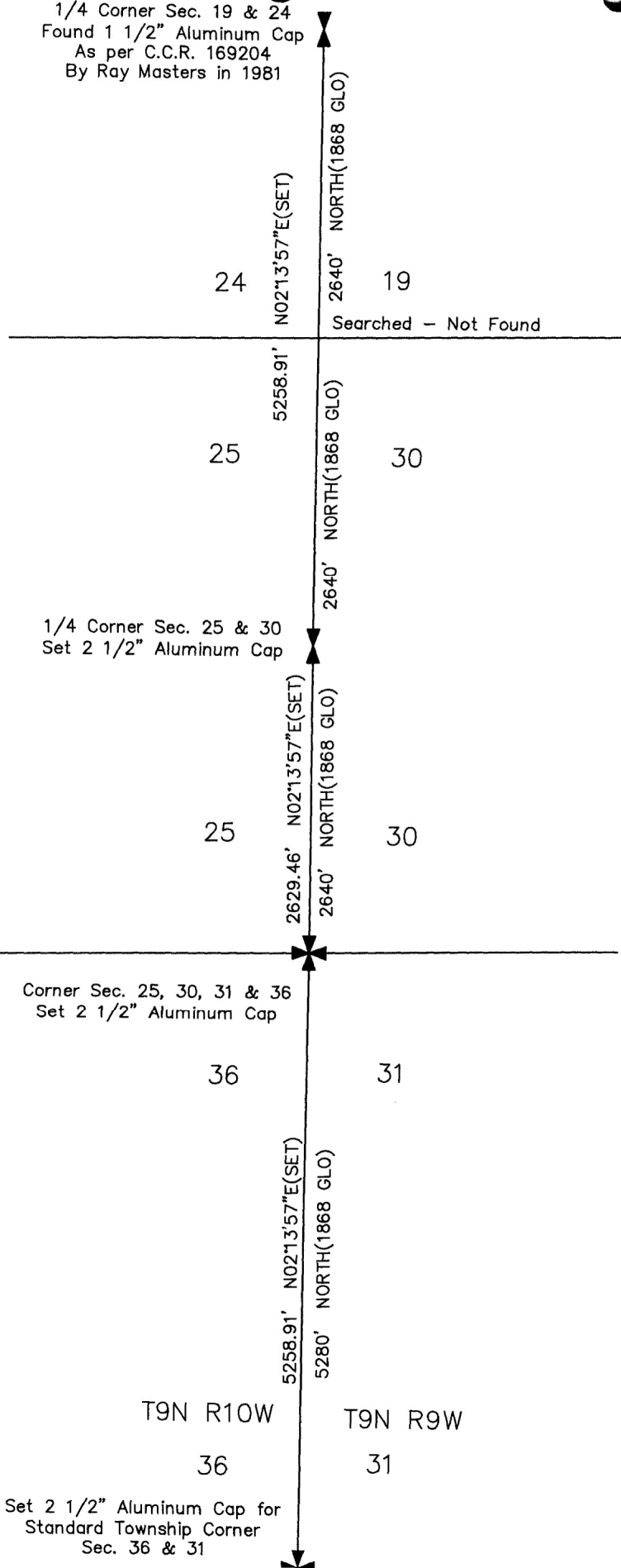
Cross Index No. T-1 T. 9N R. 9W PMM
 Cross Index No. T-25 T. 9N R. 10W PMM

Sec. 25



• - corner this sheet

1/4 Corner Sec. 19 & 24
Found 1 1/2" Aluminum Cap
As per C.C.R. 169204
By Ray Masters in 1981



N02°13'57"E(SET)

2640' NORTH(1868 GLO)

24

19

Searched - Not Found

5258.91'

2640' NORTH(1868 GLO)

25

30

1/4 Corner Sec. 25 & 30
Set 2 1/2" Aluminum Cap

N02°13'57"E(SET)

2640' NORTH(1868 GLO)

25

30

Corner Sec. 25, 30, 31 & 36
Set 2 1/2" Aluminum Cap

N02°13'57"E(SET)

5280' NORTH(1868 GLO)

36

31

T9N R10W

T9N R9W

36

31

Set 2 1/2" Aluminum Cap for
Standard Township Corner
Sec. 36 & 31