

CERTIFIED CORNER RECORDATION

Corner S21|S22 T. _____ R. _____ P.M.,M
S28|S27 T. 9N R. 6W P.M.,M. POWELL County

1902 GLO Original Survey by Williams Book Vol. 4106 Page 41:

"Set a granite stone 16x12x9 ins 11 ins in the ground for Cors of Secs 21,22,27 and 28 marked with 2 notches on S and 3 notches on E edge from which:

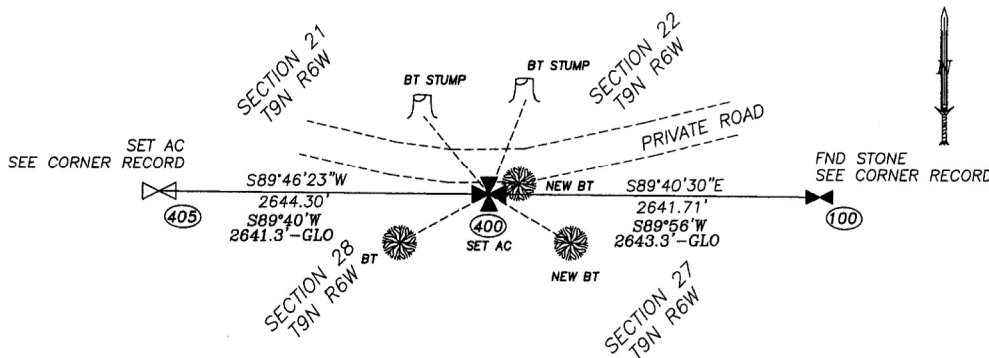
- A fir, 10 ins. diam. bears N21°30'E, 38 lks. dist. marked T9N R6W S22 BT
- A pine, 10 ins. diam. bears S32°20'E, 35 lks. dist. marked T9N R6W S27 BT
- A fir, 12 ins. diam. bears S61°40'W, 44 lks. dist. marked T9N R6W S28 BT
- A fir, 18 ins. diam. bears N41°10'W, 80 lks. dist. marked T9N R6W S21 BT"

2009 Recovery and Remonumentation by Stark (12249LS):

I find 3 of the 4 original BTs, and at the point calculated from the original BT information, the position lands in a fill of a recently constructed road. After excavation and diligent search I am unable to find the stone. At the above position, I set a 30" long 2 1/2" diameter aluminum pipe, with a 3/4" aluminum cap stamped as shown below. The cap is 6" above ground.

From which:

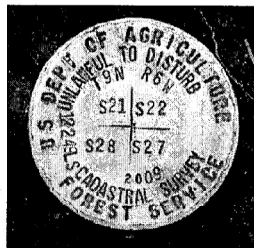
- A 18" fir stump, with evidence of original scribing, bears N21°10'E 25.1' distant.
 - A 24" Douglas Fir, w/ BT tag, and scribed "S22 BT" bears N55°E 5.6' distant.
 - A 13" Douglas Fir, w/ BT tag, and scribed "S27 BT" bears S75°E 26.5' distant.
 - A 16" Fir with an old BT tag ("NE 25') with evidence of scribing bears South 61°20' West 29.0' dist. with Bearing Tree Tag attached.
 - A 20" Fir stump with old scribing remains, bears North 39°50' West 52.6' dist.
- USFS witness posts with decal bears east and west 3 feet dist.



NAD83(cors96) [FOR REFERENCE ONLY!]
 46°30'43.305"N
 112°20'51.680"W

405 - SURVEY SHOT #

Bearings listed in remonumentation section were measured with GPS and rotated to Geodetic North at the project's Control Point #1, or measured with a hand compass, decl. 15' E.



SKETCH OF CORNER

CERTIFICATION
 I, Thomas E. Stark
 CERTIFY THAT THE ABOVE INFORMATION IS TRUE AND CORRECT
 SIGNATURE OF SURVEYOR
 I, Thomas E. Stark
 CERTIFY THAT THIS CORNER RECORD CORRECTLY REPRESENTS
 WORK PREPARED BY ME OR UNDER MY SUPERVISION IN
 COMPLIANCE WITH THE CORNER RECORDATION ACT
 (7-22-10) 2009 M.C.A.
 DATE: 9/27/2010
 EMPLOYER: Robert [unclear] & Assoc

OFFICE **165831 Fee: \$0.00 Bk Pg**
POWELL COUNTY Filed 11/15/2010 At 11:45 AM
 WAS FILED Diane S. Grey, CLK & Rcdr By [Signature]
 WAS NC **Return To: FILING**
 BOOK N.

COUNTY OFFICIAL

CROSS INDEX NO. _____ T. _____ R. _____ P.M.,M.
 CROSS INDEX NO. R-13 T. 9N R. 6W P.M.,M.

SECTION 21

✠ CORNER THIS SHEET (#400)