

253307

CERTIFIED CORNER RECORDATION

Corner North 1/4 Section 28 T. 8N R. 26E P.M.M. Musselshell County

ORIGINAL RECORD: Unknown.

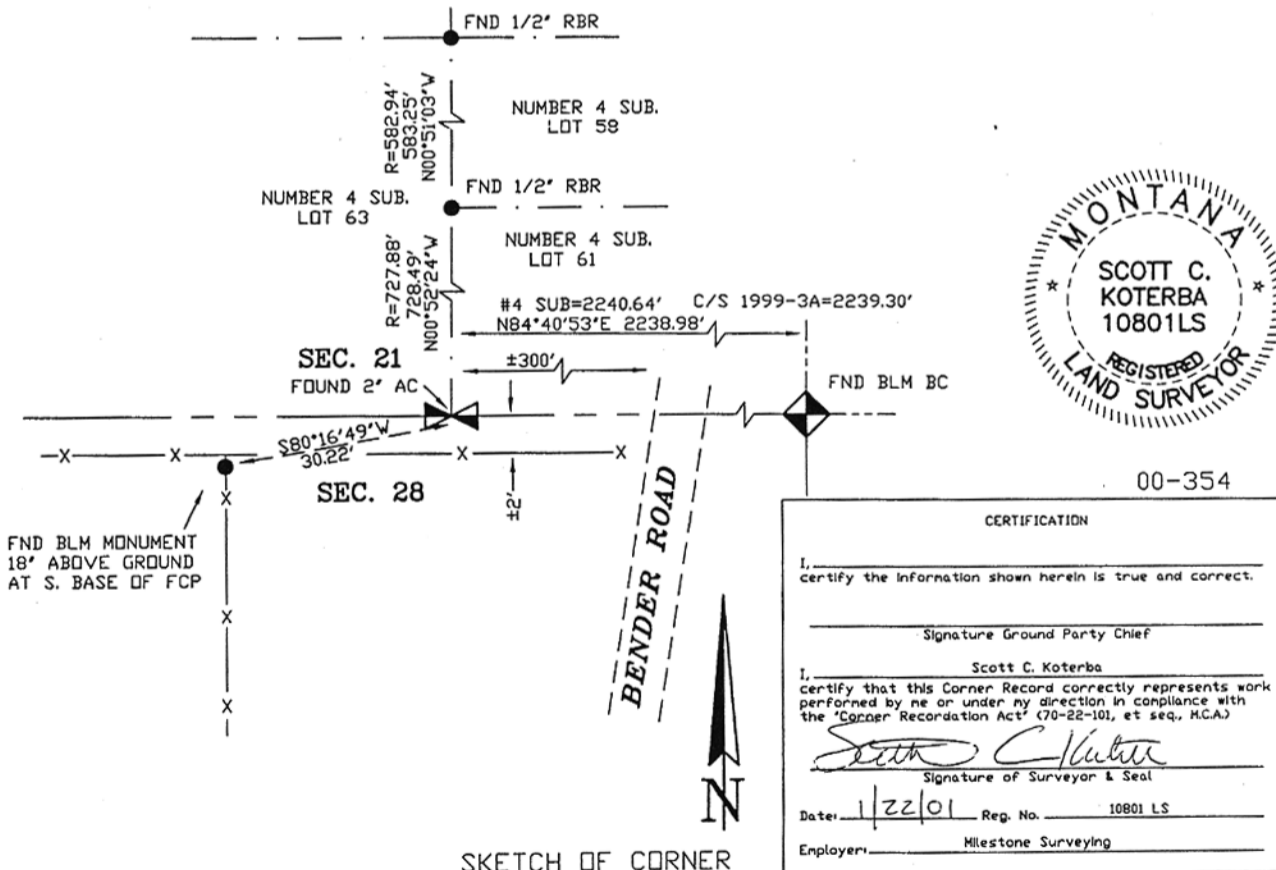
SUBSEQUENT RECORD:

1. A 1954 resurvey by the BLM resulted in a brass cap monument being set at the single proportion position.
2. Tout (2358S) found a BLM brass cap in a 1974 survey (Number Four Subdivision).
3. C/S 1999-3 & C/S 1999-3A (Jones 1823S) show that the BLM brass cap was found 30' West of the position shown by the 1974 survey in Section 21. Since adjacent ties East and West of the corner verified that the corner had obviously been moved, Jones reset the true corner position with a rebar and 2" aluminum cap. No new corner recordation has been filed.

EVIDENCE FOUND: (January, 2001) Found a brass cap monument 18" above ground at the South base of a fence corner post East-West by South. Also found a rebar with 2" aluminum cap set by Jones (1823 S) with scattered remains of a stone mound. I made additional ties to property corners located along the mid-section line in Section 21 as shown on the Number Four Subdivision. As shown below, these ties concurred with the finding of Jones and even further justified his position for the corner.

PERPETUATION: Accepted Jones's rebar and aluminum cap as the true corner position. See drawing below.

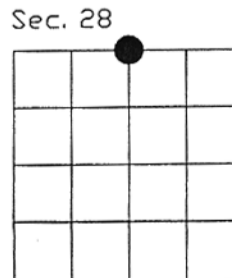
SEE ASSOCIATED CERTIFICATE OF SURVEY



Office of CI 253307 Fee \$.00
record' was MUSSELSHELL COUNTY
was noted (Recorded 01/24/2001 At 09:30 AM
By Jane E Mang, Clerk and Recorder
By Judith B Hawkins Deputy

County Official

Cross Index No. R11 T. 8N R. 26E PMM



● corner this sheet