

INSTRUCTIONS

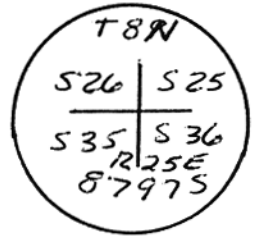
1. Original and/or subsequent record used to evaluate the corner position.
2. Description of evidence found, note discrepancies in the record, state method of establishing lost or obliterated corners.
3. Description of monument and accessories set to perpetuate the corner position.
4. Sketch or corner, show all pertinent data which can best be shown in a sketch example, corner marking, topography ties, position of accessories, etc.
5. Certification must be signed and sealed by Registered Land Surveyor in State of Montana.
6. Fill in Cross Index & Section Diagram at bottom of sheet.

CERTIFIED CORNER RECORDATION

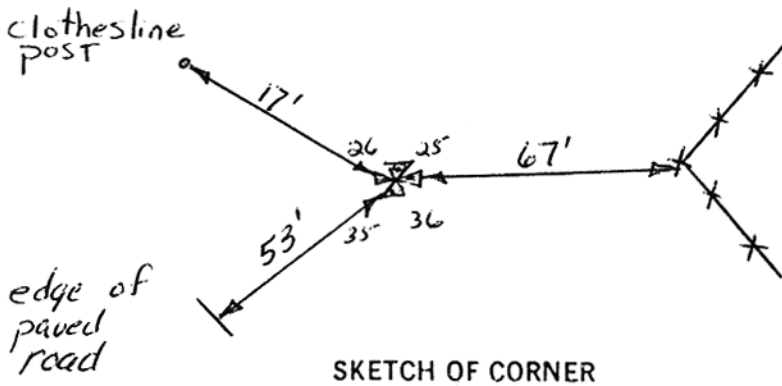
Corner SE Cor. Sec. 26 T. 8 N R. 25 E P.M.M. Musselshell County

1) Original GLO notes (1883) "set a sand stone 20 x 18 x 8 ins 15 ins. in the ground for Cor to Secs 25, 26, 35 & 36 marked 1 notch on S end E edges, raised a mound of stone alongside pits unpracticable.  
 COS 1988-10 indicates the corner as existing (no description) the surveyors number on the C.O.S. and cap in field match.

2) Found 1 1/2" Aluminum Cap marked



3) No additional monuments set to perpetuate corner.



CERTIFICATION  
 I, Dan Kenczka  
 certify the information shown herein is true and correct.  
Dan Kenczka  
 Signature Ground Party Chief  
 I, Jack R. Fisher  
 certify that this Corner Record correctly represents work performed by me or under my direction in compliance with the "Corner Recordation Act" (70-22-101 et seq., M.C.A.)  
Jack R. Fisher  
 Signature of Surveyor & Seal  
 Date: 1/18/89 Reg. No. 60135  
 Employer: Thomas Dean & Hoskins

Office of Clerk and Recorder, County of Musselshell. This "corner record" was filed for record on the February 14 day of 1989 was noted on the cross-index plat and is assigned page No. \_\_\_\_\_, in book No. \_\_\_\_\_  
Francis L. Dawson  
 County Official

