

190027

CERTIFIED LAND CORNER RECORDATION

DESCRIPTION OF CORNER EVIDENCE FOUND, AND ORIGINAL RECORD (IF KNOWN)

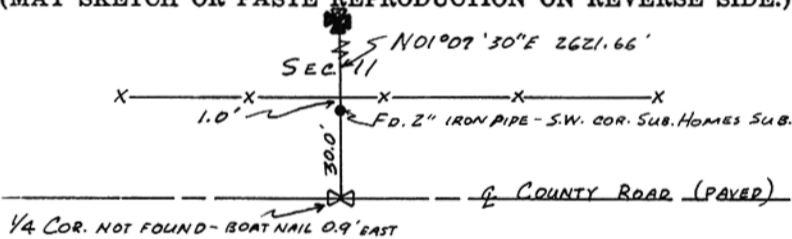
ORIGINAL- SANDSTONE 15x13x5 ins., 10 ins. in the ground marked 1/4 on N. face.
DUG PITS 18x18x12 ins. E & W of stone and raised a mound 1 1/2' high & 3 1/2' base along side. NOT FOUND.
FOUND - 2" IRON PIPE (THE SW CORNER OF SUBURBAN HOMES SUBDIVISION) 30' NORTH OF THE 5/4 CORNER.

DESCRIPTION OF MONUMENT AND ACCESSORIES ESTABLISHED TO PERPETUATE THE ORIGINAL LOCATION OF THIS CORNER:

TIES TO PERPETUATE LOCATION OF 2" IRON PIPE
1. SET BOAT NAIL IN & PAVED ROAD 30.0' S. OF PIPE.
2. R/W FENCE IS 1.0' N. OF PIPE.

Date of work: NOVEMBER, 1972

SKETCH, WITH COURSE AND DISTANCE TO ADJACENT CORNERS IF DETERMINED IN THIS SURVEY. (MAY SKETCH OR PASTE REPRODUCTION ON REVERSE SIDE.)



SEC. 14

T-8N, R-25E, M.P.M.

MUSSELSHELL COUNTY, MONTANA

Surveyor's Seal

I, David H. Bick, certify that the information shown herein is true and correct.

Signature of David H. Bick

Signature of Ground Party Chief

I, Elmer E. Truff, certify that I have carefully performed or reviewed the work done on the diagrammed corner as reported on this recordation form and approve the same.

Signature of Elmer E. Truff

Signature of Surveyor

DIAGRAM OF CORNER:



= Corner recorded on the sheet

25255
Registration Number

STATE OF MONTANA
COUNTY OF MUSSELSHELL

Office of Clerk and Recorder, County of Musselshell

This "corner record" was filed for record on the 26 day of March 1975 at 9:12 AM, was noted on the cross-index plat and is assigned page No. in book No.
Francis L. Dawson
County Official