

190030

CERTIFIED LAND CORNER RECORDATION

DESCRIPTION OF CORNER EVIDENCE FOUND, AND ORIGINAL RECORD (IF KNOWN)

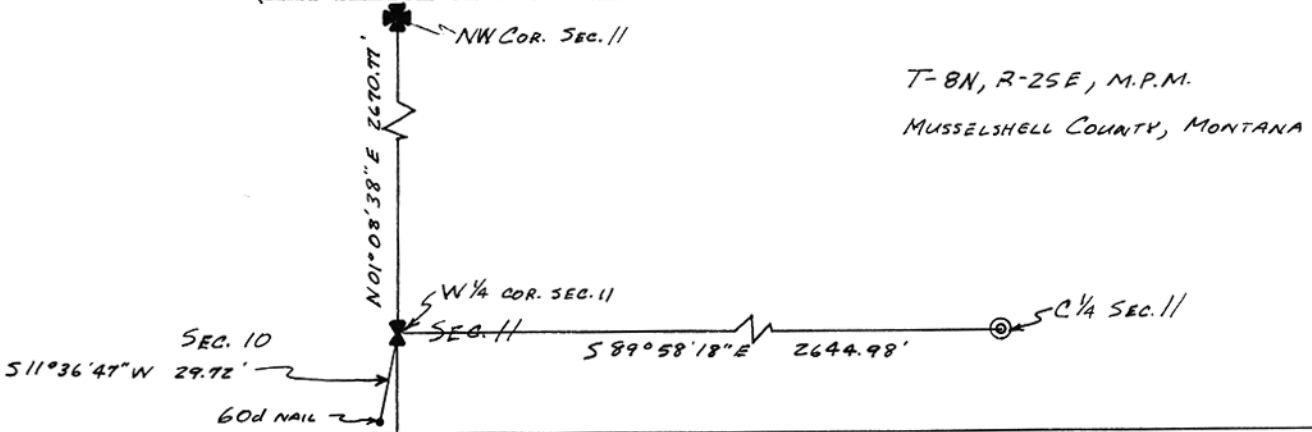
ORIGINAL - SANDSTONE 26X18X9 INS. 20 INS. IN THE GROUND MARKED 1/4 ON W. FACE.
PITS IMPRACTICABLE. A PINE 12" IN DIA. BEARS S25°W 181KS. DIST. MARKED 1/4 S. B.T.
A PINE 18" IN DIA. BEARS N18°50'E, 27 LKS. DIST. MARKED 1/4 S. B.T. - NOT FOUND
SET - A BRASS CAP MONUMENT - 2" CAP MARKED 1/4 S. B.T. MOUNTED ON A 1"X18" IRON PIPE WITH LOCKING BAR.

DESCRIPTION OF MONUMENT AND ACCESSORIES ESTABLISHED TO PERPETUATE THE ORIGINAL LOCATION OF THIS CORNER:

TIES TO PERPETUATE THE LOCATION OF BRASS CAP MONUMENT.
1. RAISED A MOUND OF SANDSTONE ROCKS AROUND MONUMENT.
2. A 60d NAIL BEARS S31°36'47"W A DIST OF 29.72'

Date of work: NOVEMBER 1973

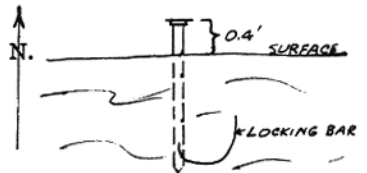
SKETCH, WITH COURSE AND DISTANCE TO ADJACENT CORNERS IF DETERMINED IN THIS SURVEY. (MAY SKETCH OR PASTE REPRODUCTION ON REVERSE SIDE.)



Surveyor's Seal

I, DAVID H. BICK certify that the information shown herein is true and correct.
David H. Bick
Signature of Ground Party Chief

DIAGRAM OF CORNER:



I, Elmer E. Trost certify that I have carefully performed or reviewed the work done on the diagrammed corner as reported on this recordation form and approve the same.
Elmer E. Trost
Signature of Surveyor

= Corner recorded on the sheet

25255
Registration Number

Office of Clerk and Recorder, County of Musselshell

This "corner record" was filed for record on the 26 day of March 1975 @ 9:20 a.m., was noted on the cross-index plat and is assigned page No. in book No.
Frances Salomon
County Official