

104438

CERTIFIED CORNER RECORDATION

Corner W 1/4 SECTION 14 T. 8N R. 15E P.M.M. WHEATLAND County

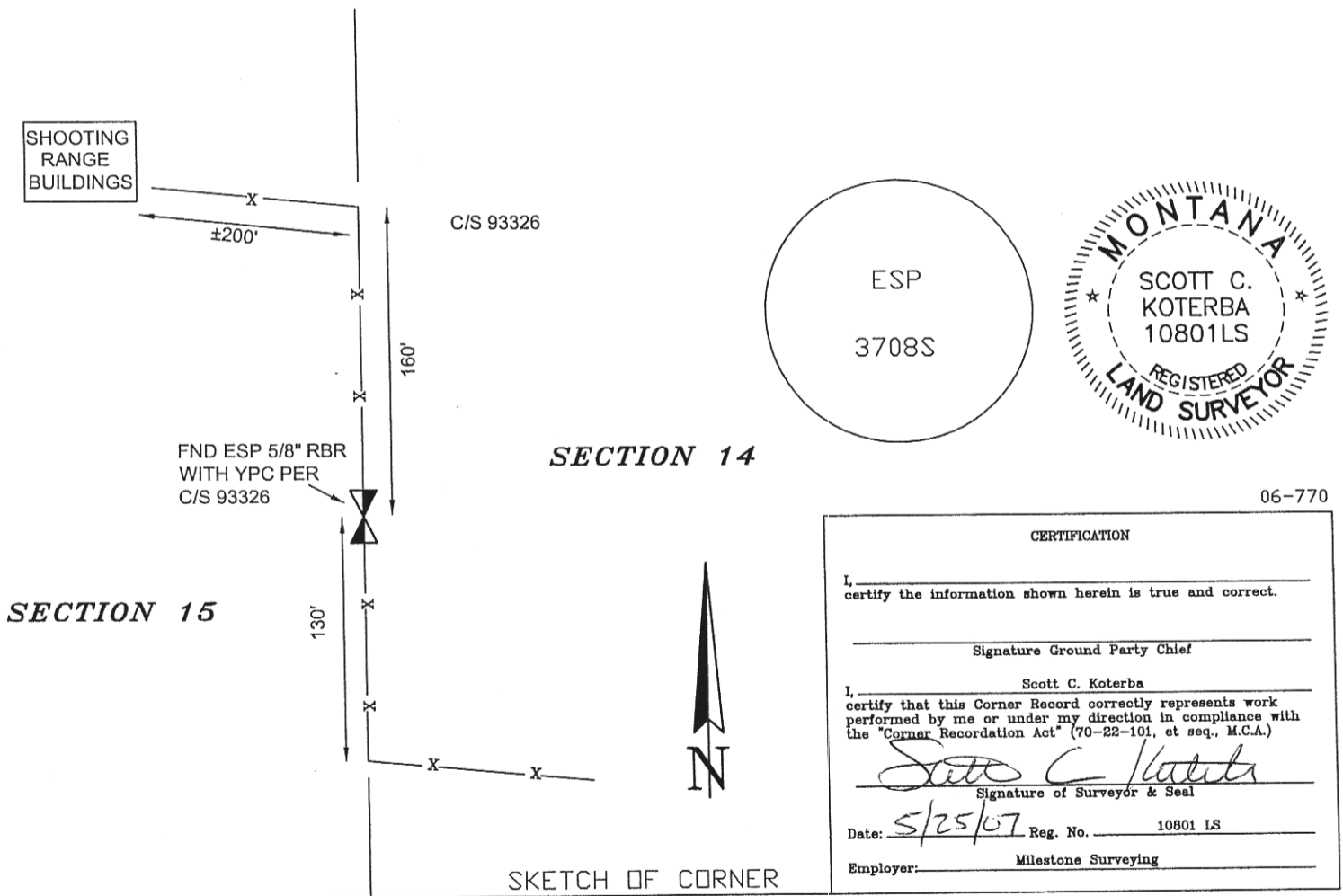
ORIGINAL RECORD: (GLO - DeLacy & Folsom, 1874) Set a limestone 20 x 8 x 4 in. 13 in. in the ground for 1/4 Sec. Cor. marked 1/4 on W. face.

SUBSEQUENT RECORD: (Esp 3708S, 1990) Esp sets a 5/8" rebar with yellow plastic cap in C/S 93326, but does not file a corner recordation.

EVIDENCE FOUND: (November, 2006) No original evidence was found. Found a 5/8" rebar with yellow plastic cap, marked "Esp 3708S" per C/S 93326.

PERPETUATION: (November, 2006) Accepted the 5/8" rebar and yellow plastic cap as found.

SEE PLAT OF ANTELOPE SUBDIVISION



SKETCH OF CORNER

Office of Clerk and Recorder, County of Wheatland. This "corner record" was filed for record on May 29, 2007 was noted on the cross-index plat and is assigned page No. 267, in book No. 1 Loren Brown deputy County Official

104438

Cross Index No. L-17 T. 8N R. 15E PMM

