

CERTIFIED CORNER RECORDATION

Corner SE COR. S.22 T. 8N. R. 15E. P.M.M. Wheatland County

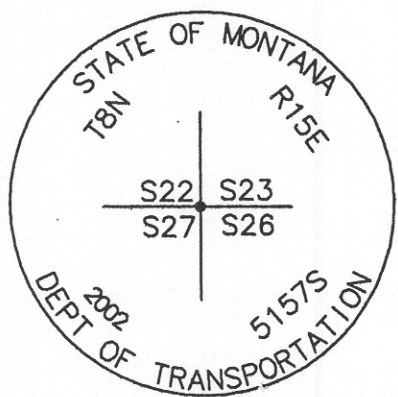
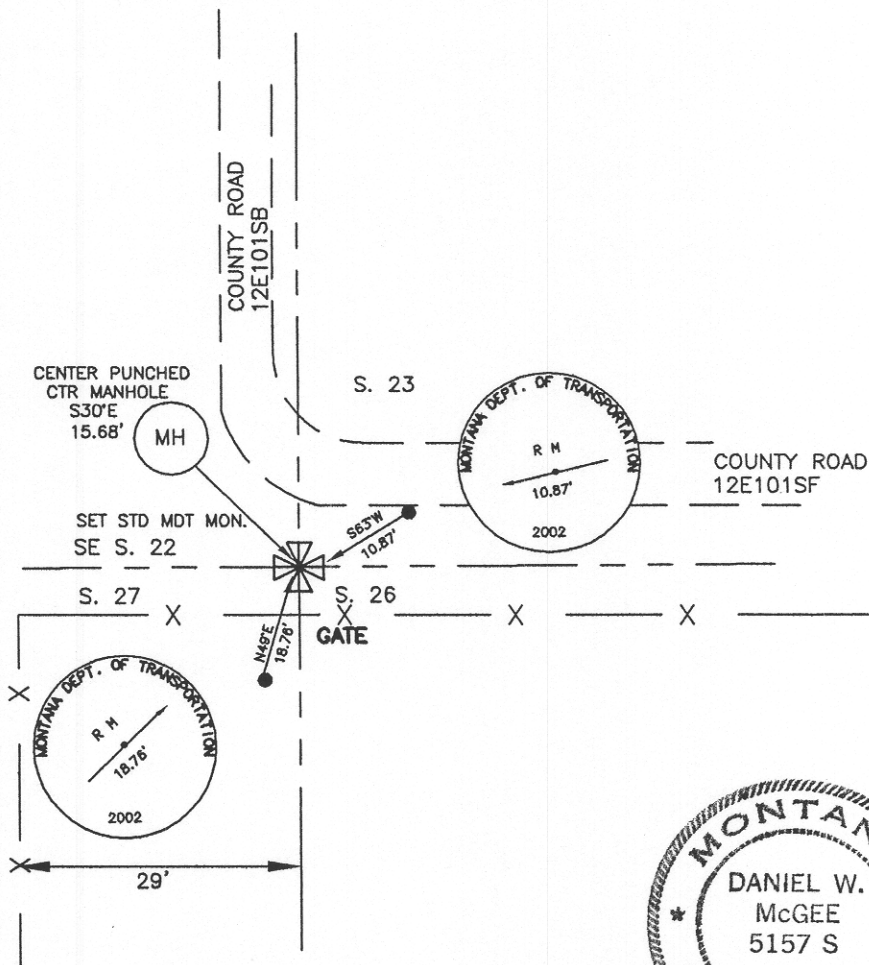
ORIGINAL RECORD: 1874 GLO NOTES: SET A SANDSTONE 18 X 14 X 3 INS. 12 INS. IN THE GROUND FOR COR. TO SEC. 22, 23, 26, & 27 MARKED WITH 2 NOTCHES ON S. & E. EDGE.

SUBSEQUENT RECORD: THE PLAT OF TUCKER'S ADDITION TO THE CITY OF HARLOWTON SHOWS A TIE TO THE SEC. COR. OF 22, 23, 26, & 27.

EVIDENCE FOUND: AT THE CORNER POSITION, FOUND A 1in. CARRIAGE BOLT.

RE-ESTABLISHMENT:

PERPETUATION: IN PLACE IF BOLT, SET STANDARD MDT 2"x30" ALUMINUM MONUMENT WITH 3.25" CAP. SET REFERENCE POST 1.0' SOUTH. SET REFERENCE MONUMENTS FLUSH WITH THE GROUND AS SHOWN BELOW.



SKETCH OF CORNER

CERTIFICATION

I, PHIL KOTERBA
 certify the information shown herein is true and correct
Phil Koterba
 Signature Ground Party Chief

I, Daniel W. McGee
 certify that this Corner Record correctly represents work performed by me or under my direction in compliance with the "Corner Recordation Act" (70-22-101, et seq., M.C.A.)
Daniel W. McGee
 Signature of Surveyor & Seal
 Date: 12/20/02 Reg. No. 5157S
 Employer: HARP Engineering

Office of Clerk and Recorder, County of Wheatland. This "corner

record" was filed for record on 12-23-2002

was noted on the cross-index plat and is assigned page No. 184, in

document
 book No. 101486

tsmart
 County Official

Sec. 22
