

# CERTIFIED CORNER RECORDATION

Corner S 16 | S 15 S 21 | S 22 T. 8N. R. 15 E. P.M.M. Wheatland County

1874 G.L.O. Survey by W. W. DeLacy & D. E. Folsom, Book 723 Page 30

"Set a Sandstone 18x6x4 in. 12 in. in the ground for Cor. to Sec. 15, 16, 21 & 22 marked with 3 notches on S. and E. edges."

Evidence Found this Survey

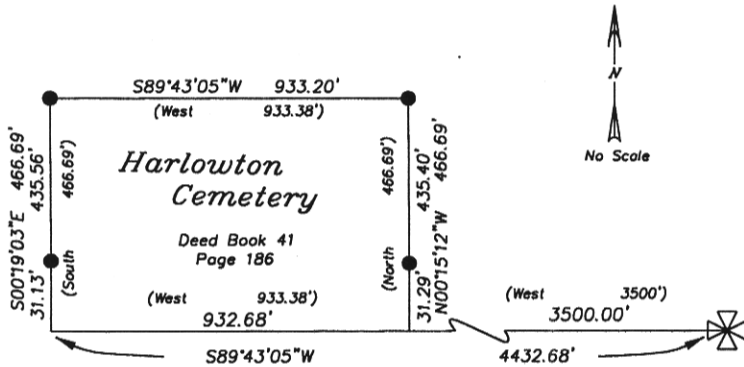
I find no evidence of original stone, as position falls in swampy area. Harlowton City Cemetery's corners to the west have a call to the above said section corner. The section corner position as established from the found cemetery corners fits very closely to record G.L.O. bearings and distances to found stones north and east. The cemetery corners were used as the best local evidence to re-establish this corner.

1998 Remonumentation by S. R. Smith

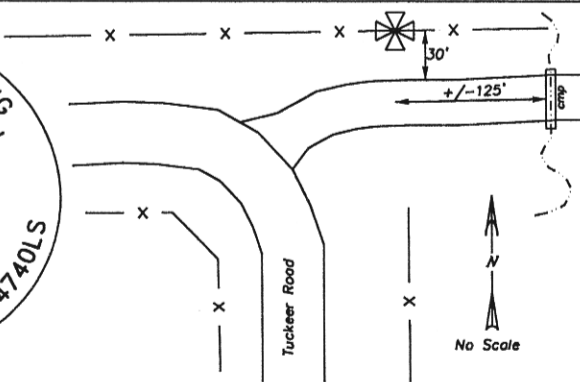
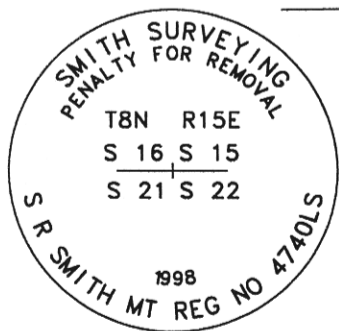
At the position described above, I set an aluminum pipe 2 1/2" diameter, 30" long, 25" in the ground, with 3 1/4" diameter aluminum cap, marked as shown below.

The set monument falls in an east-west fenceline in a swampy area. There are no references available.

Refer to the Certificate of Survey filed in conjunction with this corner recordation for ties to adjacent section controlling corners.



- Found 8" dia. x 5' high fencecorner post.
- (589°43'05"W 933.20') Record Bearing and distance per Deed 43/404
- West 933.38' Found Bearing and Distance



SKETCH OF CORNER

MONTANA  
REGISTERED  
LAND SURVEYOR

SAMUEL R. SMITH  
4740LS

CERTIFICATION

I, Thomas E. Stark certify the information shown herein is true and correct.

*Thomas E. Stark*  
Signature Ground Party Chief

I, S. R. Smith certify that this Corner Record correctly represents work performed by me or under my direction in compliance with the "Corner Recordation Act" (70-22-101, et seq., M.C.A.)

*S. R. Smith*  
Signature of Surveyor & Seal

Date: 3/24/98 Reg. No. 4740S

Employer: Smith Surveying

Office of Clerk and Recorder, County of Wheatland. This "corner record" was filed for record on June 3, 1998 was noted on the cross-index plat and is assigned page No. 98783, in book No. filed Carol Clark County Official

Cross Index No. N-13 T. 8 N. R. 15 E. P.M.M.

Adopted July 1, 1981, Montana Board of Professional Engineers & Land Surveyors

Sec. 16


✠ corner this sheet ✠