

# CERTIFIED CORNER RECORDATION

Corner SE COR. S.21 T. 8N. R. 15E. P.M.M. Wheatland County

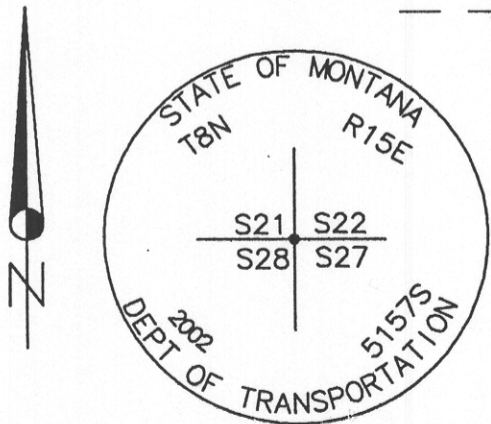
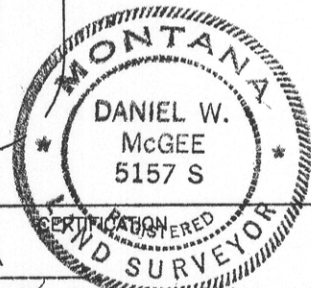
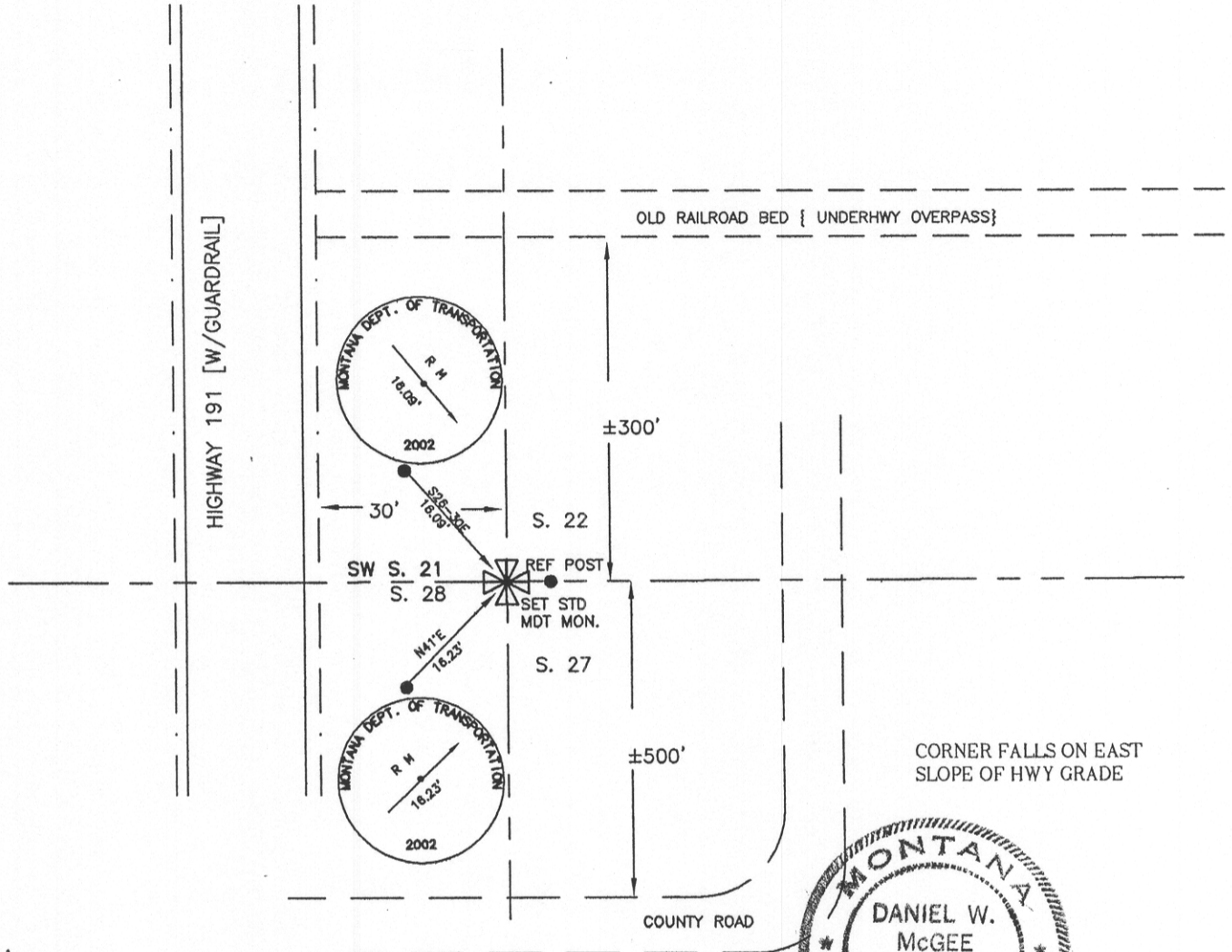
**ORIGINAL RECORD:** 1874 GLO NOTES: SET A SANDSTONE 18 X 12 X 3 INS. 12 INS. IN THE GROUND FOR COR. TO SEC. 21, 22, 27, & 28 MARKED WITH 2 NOTCHES ON S. AND 3 NOTCHES ON E. EDGE.

**SUBSEQUENT RECORD:** HIGHWAY RIGHT OF WAY PLANS-- F.A.P. #F-45(5) AND F.A.P. #292 SHOWS A TIE TO THE CORNER.

**EVIDENCE FOUND:** NOTHING FOUND AT THE CORNER POSITION

**RE-ESTABLISHMENT:** FROM HIGHWAY RIGHT OF WAY MONUMENT TIES ON THE WEST SIDE OF H/W, COMPUTED POSITION OF SEC. COR.

**PERPETUATION:** ON EAST SLOPE OF H/W FILL, SET STANDARD MDT 2"x30" ALUMINUM MONUMENT WITH 3.25" CAP 0.3' ABOVE GROUND. SET REFERENCE POST 1.0' EAST. SET 5/8"RBR WITH 2" MDT AC REFERENCE MONUMENTS FLUSH WITH THE GROUND AS SHOWN BELOW.



SKETCH OF CORNER

I, PHIL KOTERBA  
 certify the information shown herein is true and correct  
*Phil Koterba*  
 Signature Ground Party Chief

I, Daniel W. McGee  
 certify that this Corner Record correctly represents work performed by me or under my direction in compliance with the "Corner Recordation Act" (70-22-101, et seq., M.C.A.)  
*Daniel W. McGee*  
 Signature of Surveyor & Seal

Date: 12/23/02 Reg. No. 5157S  
 Employer: HARP Engineering

Office of Clerk and Recorder, County of Wheatland. This "corner record" was filed for record on 12-23-2002

was noted on the cross-index plat and is assigned page No. 182, in

document book No. 101684

*Asmar*  
 County Official

Cross Index No. R 13 T. 8N. R. 15E. PMM

Sec. 21


● - Corner this sheet