

# CERTIFIED CORNER RECORDATION

Corner S17 | S16 / S20 | S21 T. 8 N. R. 15 E. P.M.M. Wheatland County

1874 G.L.O. Survey by W. W. DeLacy & D. E. Folsom, Book 723 Page 43  
 "Set a Sandstone 20x14x2 in. 13 in. in the ground for Cor to Sec 16, 17, 20, & 21 marked with 3 notches on S. and 4 notches on E. edges."

Evidence Found this Survey

Corner location is in intersection of county roads. I find no evidence of original stone; however, the Catholic Cemetery's corners to the southwest have a call to the section corner. When the section corner position is established from the found cemetery corners, the location of the section corner fits very closely to record G.L.O. bearings and distances to corner positions to the north and east. The cemetery corners were used as the best local evidence to re-establish this corner.

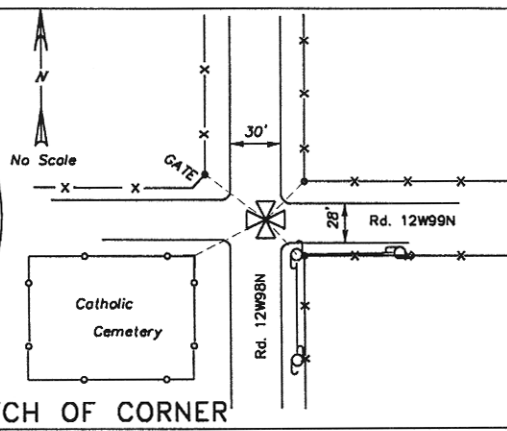
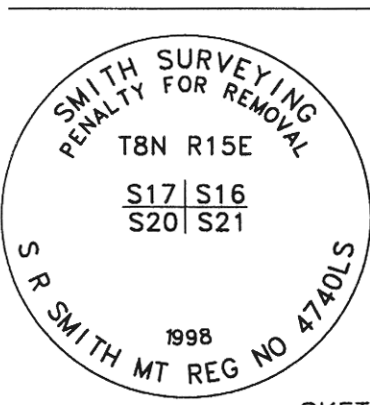
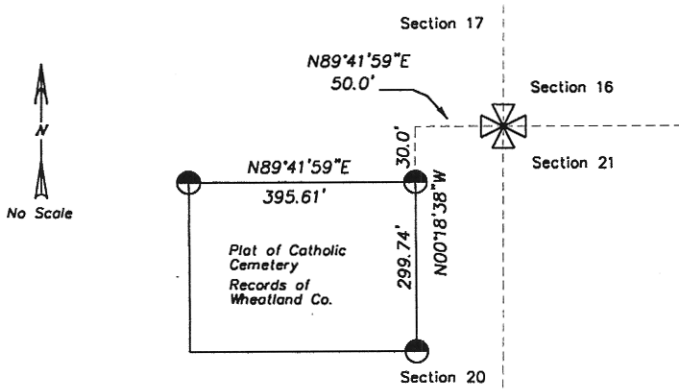
1998 Remonumentation by S. R. Smith

At the position described above, I set an aluminum pipe 2 1/2" diameter, 30" long, 35" in the ground, with 3 1/4" diameter aluminum cap, marked as shown below, from which,

- A 1.3" diameter brass disc, marked "SMITH 4740LS", set 1' above ground on the northwest side of a 6" square railroad tie fence corner post with a Reference Marker tag, bears N 43° E, 43.68' dist.
- A 1.3" diameter brass disc, marked "SMITH 4740LS", set 2' above ground on the northeast side of a 10" diameter power pole (#83) with a Reference Marker tag, bears S 38° E, 46.05' dist.
- An angle iron fence post, set in concrete (marking the northeast corner of the Catholic Cemetery), bears S 59° W, 58.30' dist.
- A 1.3" diameter brass disc, marked "SMITH 4740LS", set 1' above ground on the northeast side of a 6" diameter gate post with a Reference Marker tag, bears N 39° W, 56.65' dist.

Bearings listed in remonumentation section were measured with a hand compass, declination 14 1/2° East.

Refer to the Certificate of Survey filed in conjunction with this corner recordation for ties to adjacent section controlling corners.



CERTIFICATION

I, Thomas E. Stark  
 certify the information shown herein is true and correct.  
 Signature Ground Party Chief: Thomas E. Stark

I, S. R. Smith  
 certify that this Corner Record correctly represents work performed by me or under my direction in compliance with the "Corner Recordation Act" (70-22-101, et seq. M.C.A.)  
 Signature of Surveyor & Seal: S. R. Smith

Date: 3/25/98 Reg. No. 4740S  
 Employer: Smith Surveying

Office of Clerk and Recorder, County of Wheatland. This "corner record" was filed for record on June 3, 1998 was noted on the cross-index plat and is assigned page No. 98785, in book No. filed Carol Clark County Official

Cross Index No. N-9 T. 8 N. R. 15 E. PMM

Sec. 16


✠ corner this sheet  
 j:\cr\barlow\crecs\108

*11:14 am*