

CERTIFIED CORNER RECORDATION

Corner NW SECTION 19 T. 8N R. 15N P.M.M. WHEATLAND County
NE SECTION 24 8N 14N

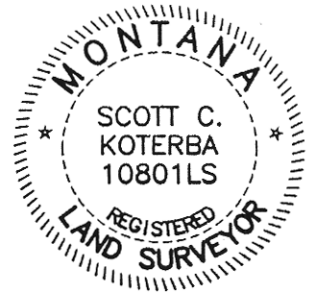
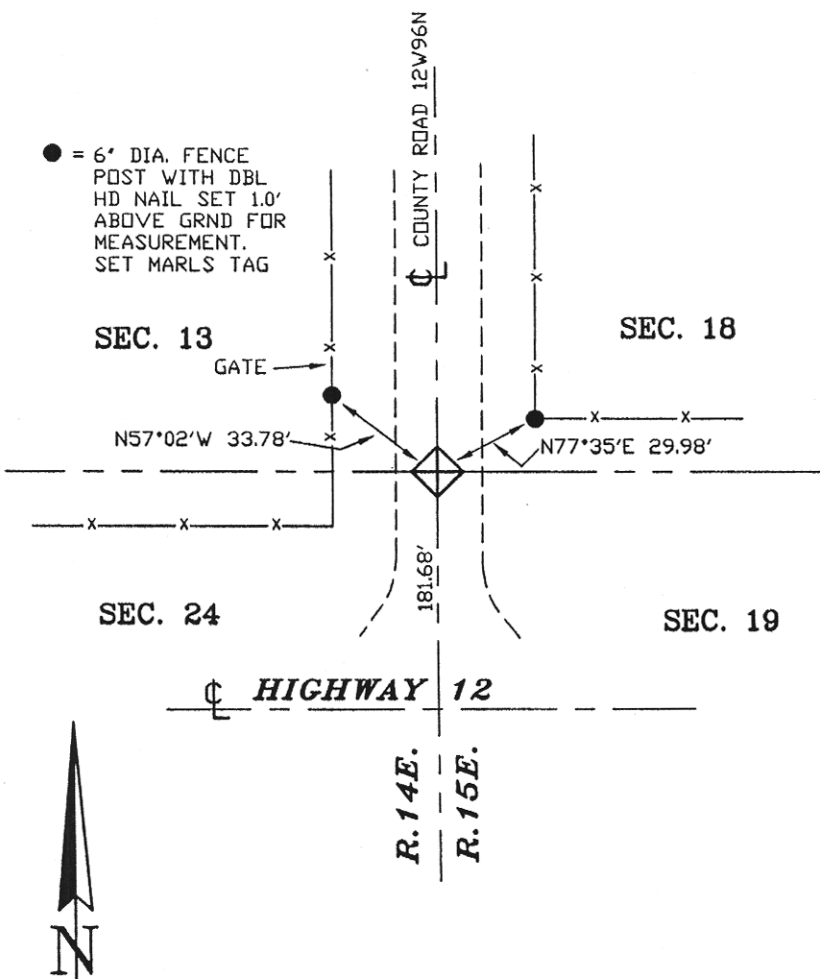
ORIGINAL RECORD: Notes from the original record were used for the search for this corner. They have since been lost.

SUBSEQUENT RECORD: This corner is referenced in C/S 100972, but no permanent monument was set or corner form filed.

EVIDENCE FOUND: Found a nail in Highway 12 set as section corner per C/S 100972. The nail was not held.

PERPETUATION: Set a 5/8" rebar with 2" aluminum cap 0.3' subsurface in gravel road. Set references as shown. Refer to C/S 102317 for perpetuation.

SEE CERTIFICATE OF SURVEY #102317



03-519

CERTIFICATION
I, _____ certify the information shown herein is true and correct.
Signature Ground Party Chief
Scott C. Koterba
I, _____ certify that this Corner Record correctly represents work performed by me or under my direction in compliance with the 'Corner Recordation Act' (70-22-101, et seq., M.C.A.)
<i>Scott C. Koterba</i> Signature of Surveyor & Seal
Date: <u>2/17/04</u> Reg. No. <u>10801 LS</u>
Employer: <u>Milestone Surveying</u>

SKETCH OF CORNER

Office of Clerk and Recorder, County of Wheatland. This 'corner record' was filed for record on 2/24/04 was noted on the cross-index plat and is assigned page No. 244, in document book No. 102468 Suffony Smart, deputy County Official

Sec. 19

•			

Cross Index No. N1 T. 8N R. 15E P.M.M.
N25 8N 14E

• corner this sheet