

73241

INSTRUCTIONS

1. Original and/or subsequent record used to evaluate the corner position.
2. Description of evidence found, note discrepancies in the record, state method of establishing lost or obliterated corners.
3. Description of monument and accessories set to perpetuate the corner position.
4. Sketch of corner, show all pertinent data which can best be shown in a sketch example, corner marking, topography ties, position of accessories, etc.
5. Certification must be signed and sealed by Land Surveyor registered in the State of Montana.
6. Fill in Cross Index & Section Diagram at bottom of sheet.

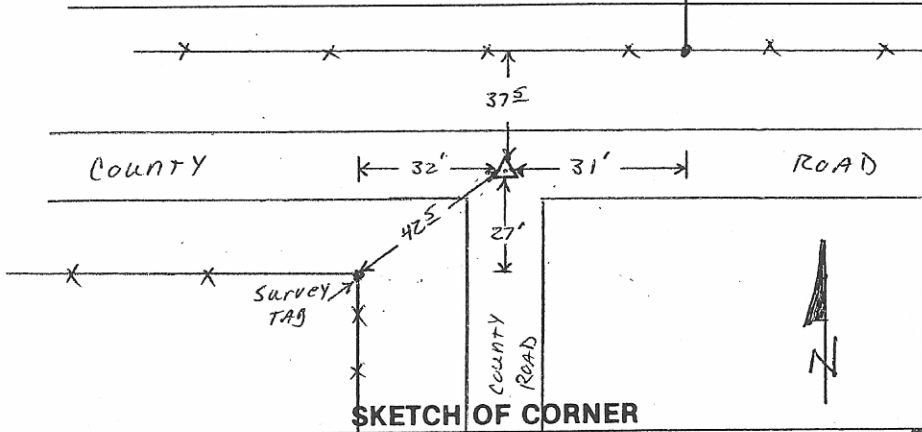
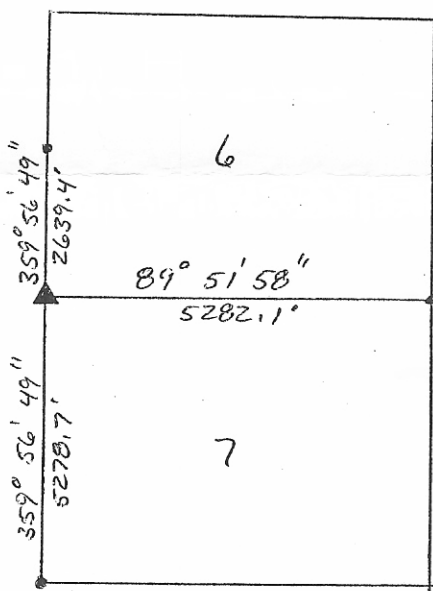
CERTIFIED CORNER RECORDATION

Corner SW sec. 6 T. 7 N R. 61 E P.M.M. FALLON County

Record: Set a sandstone 16" x 12" x 4", 11" in the ground for cor. of secs. 1, 6, 7 and 12, marked with 5 notches on S, and 1 notch on N. edges, dig pits 18" x 18" x 12", in each sec. 5 1/2' dist, and raise a mound of earth 4' base, 2' high w. of cor,

Found: No Evidence found cor. is in county road and appears to be in cut section, measured to other corners & lines of occupation, used single proportionate measurement

maintenance: set 18" rebar w/RLS cap # 11704, ALSO placed survey monument TAG in fence corner 42.5' SW of section corner,



CERTIFICATION  
 I, KIRK JORGENSEN  
 certify the information shown herein is true and correct.  
 Signature Ground Party Chief  
 I, Rick Leach  
 certify that this Corner Record correctly represents work performed by me or under my direction in compliance with the "Corner Recordation Act" (70-22-101, et seq., M.C.A.)  
 Signature of Surveyor & Seal  
 Date: 3/17/98 Reg. No. 11704  
 Employer: Kodmas Lee + Jackson

Office of Clerk and Recorder, County of Fallon This "corner record" was filed for record on March 26, 1998 at 12:30 P.M. was noted on the cross-index plat and is assigned page No. 738, in

book No. 1 Fee: N/C BOOK 1 PAGE 738 County Official Mary Lee Smith def Du

