

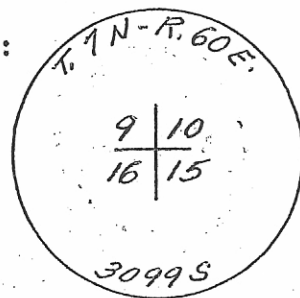
INSTRUCTIONS

1. Original and/or subsequent record used to evaluate the corner position.
2. Description of evidence found, note discrepancies in the record, state method of establishing lost or obliterated corners.
3. Description of monument and accessories set to perpetuate the corner position.
4. Sketch or corner, show all pertinent data which can best be shown in a sketch example, corner marking, topography ties, position of accessories, etc.
5. Certification must be signed and sealed by Registered Land Surveyor in State of Montana.
6. Fill in Cross Index & Section Diagram at bottom of sheet.

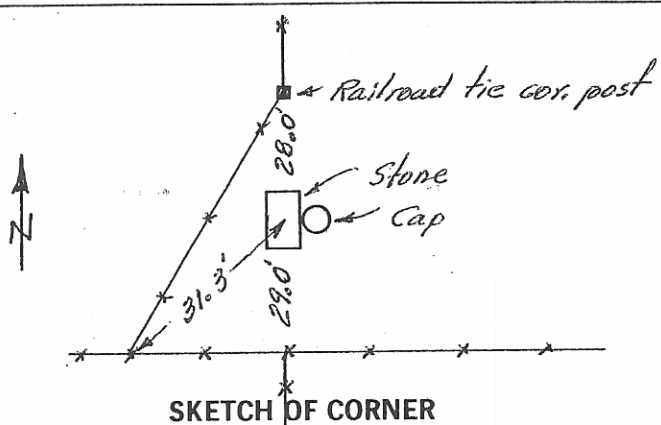
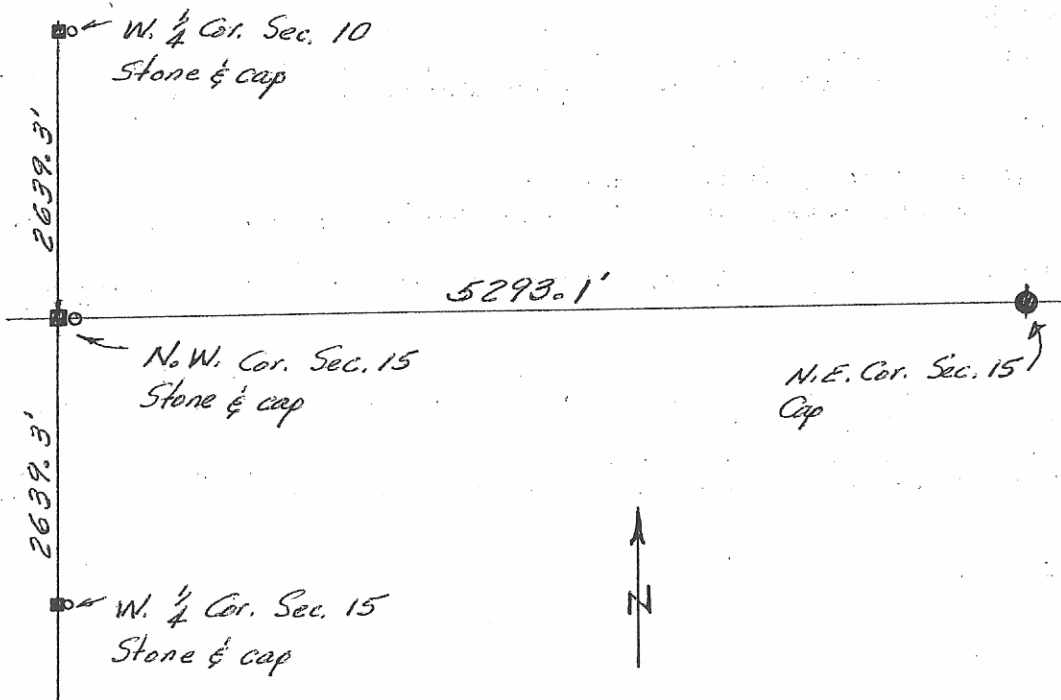
CERTIFIED CORNER RECORDATION

Corner Northwest Corner Section 15 T. 7 N R. 60 E P.M.M. Fallon County

1. Found original stone, 6" x 12", set 1' below surface of ground with 3 notches on the North face and 2 notches on the West face.
2. Set a 5/8" x 24" rebar with 3" dia. alum. cap marked as shown:



3. See sketch for ties.



SKETCH OF CORNER

CERTIFICATION

I, \_\_\_\_\_ certify the information shown herein is true and correct.

Signature Ground Party Chief

I, William P. Hansen certify that this Corner Record correctly represents work performed by me or under by direction in compliance with the "Corner Recordation Act" (70-22-101, et seq., M.D.A.)

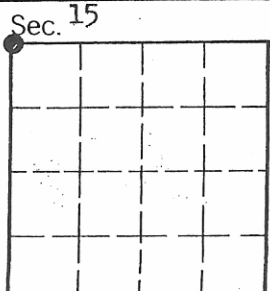
William P. Hansen Signature of Surveyor & Seal

Date: 3-29-84 Reg. No. 3099S

Employer: Montana-Dakota Utilities Co.

Office of Clerk and Recorder, County of FALLON. This "corner record" was filed for record on the April 19th day of 1984, was noted on the cross-index plat and is assigned page No. 86 in book No. 1

Mary Lee Ditz  
County Official



• - corner this sheet