

INSTRUCTIONS

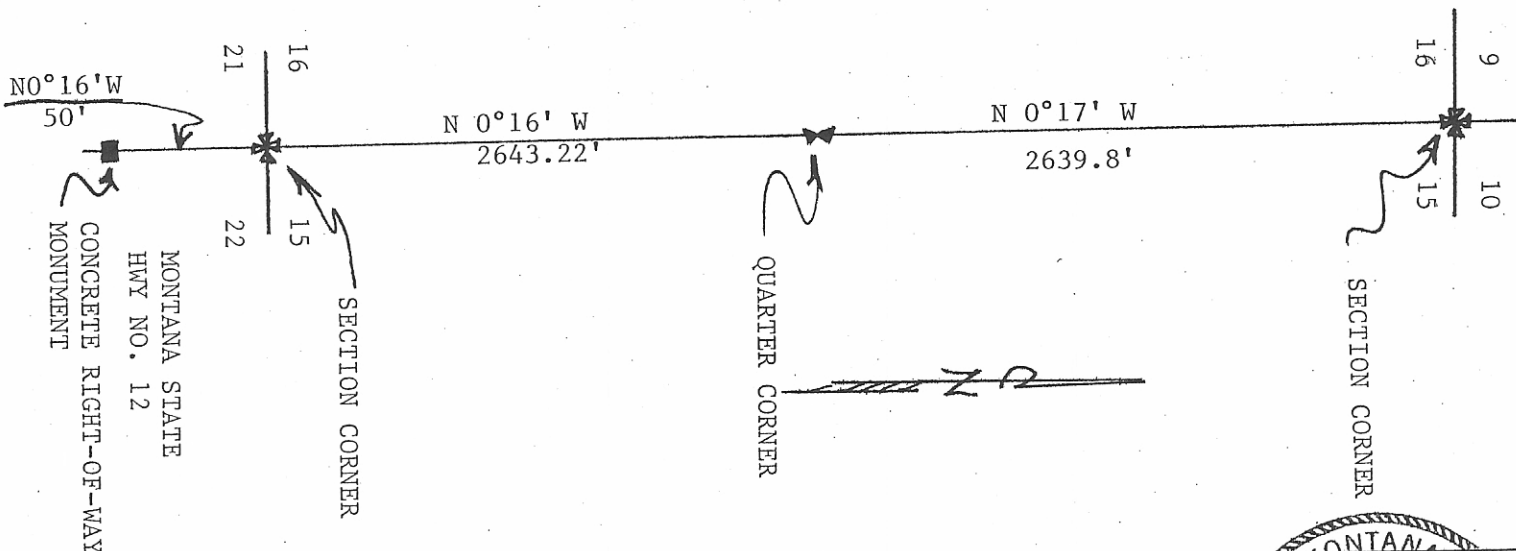
1. Original and/or subsequent record used to evaluate the corner position.
2. Description of evidence found, note discrepancies in the record, state method of establishing lost or obliterated corners.
3. Description of monument and accessories set to perpetuate the corner position.
4. Sketch of corner, show all pertinent data which can best be shown in a sketch example, corner marking, topography ties, position of accessories, etc.
5. Certification must be signed and sealed by Land Surveyor registered in the State of Montana.
6. Fill in Cross Index & Section Diagram at bottom of sheet.

CERTIFIED CORNER RECORDATION

SOUTHEAST SECTION

Corner Section 16 T. 7N R. 60E P.M.M. Fallon County

Re-established position of the Section Corner from the Montana State Highway No. 12 right-of-way plans dated July 26, 1935. I set a 5/8" x 24" rebar with 2 1/2" aluminum monument on line with the East Quarter Corner of said Section and a concrete right-of-way monument South of Highway No. 12. Said rebar is 50.0 feet Northerly of the concrete right-of-way monument. The re-established position fit the ORIGINAL MONUMENTS on the East Section Line within acceptable tolerances. See sketch below and on reverse side of this form. The original monuments have had recently filed Corner Recordations : NE SEC COR: Bk 1, Page 86 by MDU - E 1/4 COR: Bk 1, Page 84 by MDU (Bill Hansen). I found no changes or disturbances to the corners since the recordations were filed so I did not make duplicate corner recordations on these corners.



SKETCH OF CORNER

CERTIFICATION
 I, Charles M. Madler
 certify the information shown here is true and correct.
 CHARLES M. MADLER
 7327 S
 Signature of Party Chief
 I, Charles M. Madler
 certify that this Corner Record correctly represents work performed by me or under my direction in compliance with the Corner Recordation Act, C.R. 22-101, et seq., M.C.A.
 Signature of Surveyor & Seal
 Date: 12-20-84 Reg. No. 7327S
 Employer: Professional Land Services

Office of Clerk and Recorder, County of Fallon. This "corner record" was filed for record on December 21, 1984 at 9:15 A.M.

was noted on the cross-index plat and is assigned page No. 129-130, in

book No. 1
 Fee: N/C

Mary Lee Rieff
 County Official

Sec. 16
