

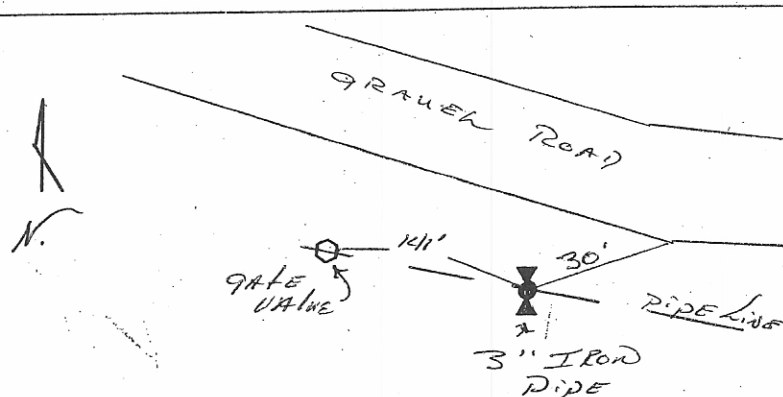
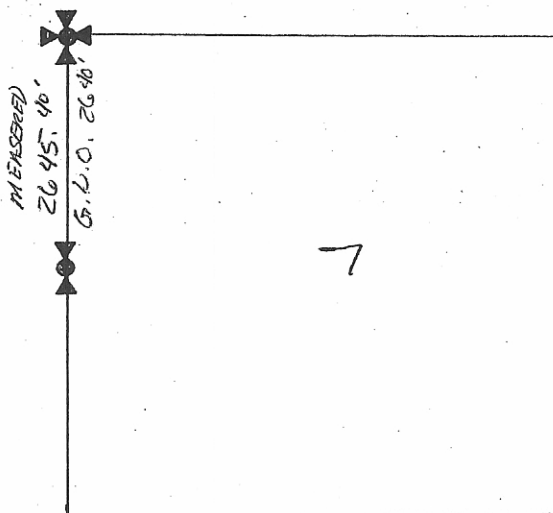
INSTRUCTIONS

1. Original and/or subsequent record used to evaluate the corner position.
2. Description of evidence found, note discrepancies in the record, state method of establishing lost or obliterated corners.
3. Description of monument and accessories set to perpetuate the corner position.
4. Sketch or corner, show all pertinent data which can best be shown in a sketch example, corner marking, topography ties, position of accessories, etc.
5. Certification must be signed and sealed by Registered Land Surveyor in State of Montana.
6. Fill in Cross Index & Section Diagram at bottom of sheet.

CERTIFIED CORNER RECORDATION

Corner West 1/4 Section 7 T. 7N R. 60E P.M.M. Fallon County

1. I used the original G.L.O. Township plat for bearings and distances.
2. At the West 1/4 corner to Section 7 I found an existing 3" iron pipe. I traversed from that pipe to a monument at the North West corner of Section 7. That distance was within 5' plus or minus of that called for on the original G.L.O. plat. No reason for change of location could be justified. I accepted the pipe as the corner.
3. I found an existing 3" iron pipe with rock piled around it approximately 8" above the ground at the West 1/4 corner to Section 7. (See sketch below).



36462

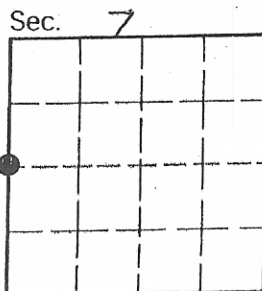
SKETCH OF CORNER

CERTIFICATION

I, Jerome Kramer
 certify the information shown herein is true and correct.
 Signature of Land Party Chief

I, Boss Milne
 certify that this Certified Record correctly represents work performed by me or under my direction in compliance with the "Corner Record Book Act", 170-22-101 et seq., M.C.A.
 2985 ES
 Registered Professional Engineer & Land Surveyor
 Date: July 30, 1982
 Employer: _____

Office of Clerk and Recorder, County of Fallon. This "corner record" was filed for record on the July 30 day of 19 82
 Received in our office Dec. 21, 1981
 was noted on the cross-index plat and is assigned page No. 4 in book No. 1
Mary Lee Ritz
 County Official



• - corner this sheet