

INSTRUCTIONS

1. Original and/or subsequent record used to evaluate the corner position.
2. Description of evidence found, note discrepancies in the record, state method of establishing lost or obliterated corners.
3. Description of monument and accessories set to perpetuate the corner position.
4. Sketch of corner, show all pertinent data which can best be shown in a sketch example, corner marking, topography ties, position of accessories, etc.
5. Certification must be signed and sealed by Land Surveyor registered in the State of Montana.
6. Fill in Cross Index & Section Diagram at bottom of sheet.

CERTIFIED CORNER RECORDATION

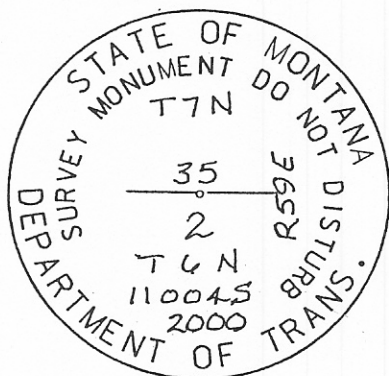
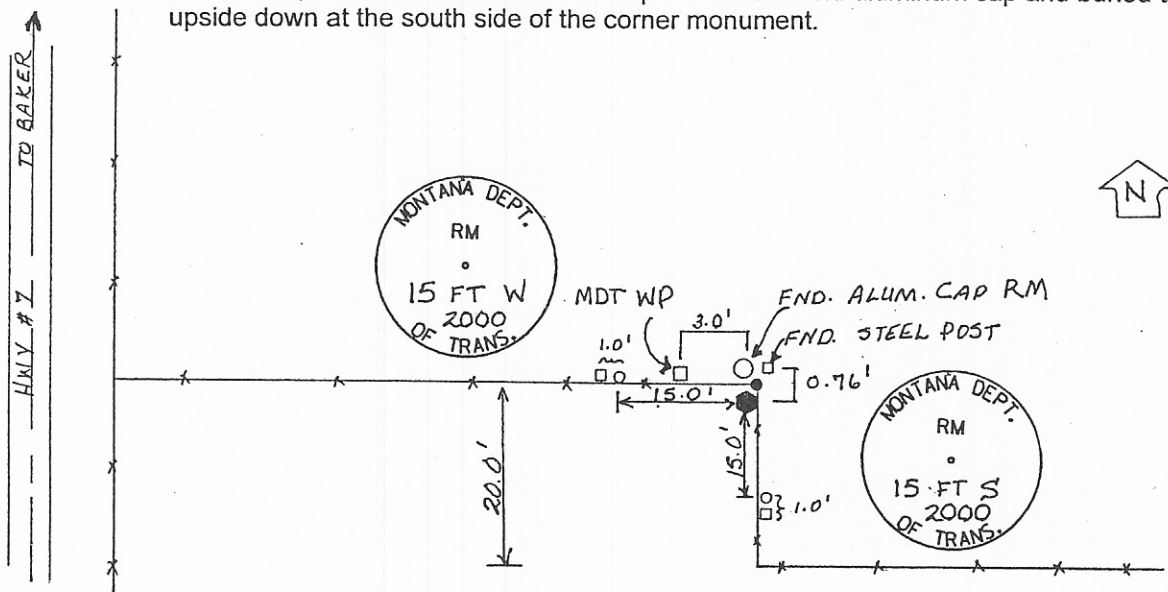
Corner N 1/4 Cor. Sec. 2 T. 6 N. R. 59 E., P.M.M. FALLON County

Original Record: GLO 1907 - 40.00 Chains: Set a Sandstone 16 x 12 x 6 ins., 11 ins. in the ground for 1/4 sec. cor., marked 1/4 on N. face; dig pits, 18 x 18 x 12 ins., E. and W. of stone, 3 ft. dist.; and raise a mound of earth, 3 1/2 ft. base, 1 1/2 ft. high N. of cor.

Subsequent Record: Certified Corner Recordation, Doc. No. 58789, pg. 482, Bk. 1, Fallon County; 7327S:
FOUND SANDSTONE. STONE WAS FIRMLY SET AND IN GOOD CONDITION. THE STONE WAS PARTIALLY COVERED AND BROKEN OFF AT GROUND LEVEL. Set a 3/4" x 24" rebar with 2" aluminum cap marked as shown below. Set a steel fencepost with survey placard alongside. Referenced to surrounding monuments and features as shown below.

Found: At a 2-way fence intersection, on the south side of the corner post, a sandstone 16 x 13 x 4 ins. with 3 ins. above ground. There are no marks visible on the stone. Also found the aluminum cap described above, 0.76 ft. north of the stone and north of the corner post; and the accessories as described above. It appears the fence was built sometime after the corner was identified in 1990 as it is approximately 20 ft. north of the position indicated on the previous corner recordation.

Set: At the position of the stone, a 3 1/2 x 30 in. MDT aluminum monument and witness post, a 6 ft. steel u-post with a MDT decal; and two reference monuments, each a 2 in. MDT aluminum cap on a 5/8 X 24 in. rebar, marked as shown below; with a witness post, each a 1 1/2 x 36 ins. steel pipe with a MDT decal, 1 ft. behind the RM's. Stamped RM on found aluminum cap and buried the stone upside down at the south side of the corner monument.



SKETCH OF CORNER 77756

CERTIFICATION

I, _____, certify the information shown herein is true and correct.

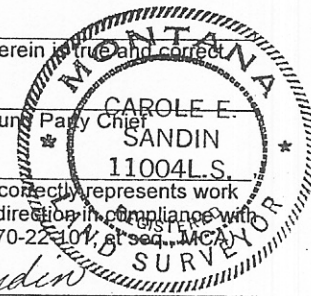
Signature of Ground Party Chief
CAROLE E. SANDIN
11004 L.S.

I, Carole E. Sandin, certify that this Corner Record correctly represents work performed by me or under my direction in compliance with the "Corner Recordation Act" (70-22-101, et seq., MCA).

Signature of Surveyor & Seal

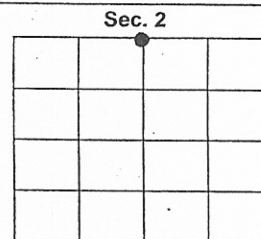
Date: 7-31-2000 Reg. No. 11004 S

Employer: MDT



Office of Clerk and Recorder, County of FALLON. This "corner record" was filed for record on AUGUST 28, 2000 AT 11:30 A.M. was noted on the cross-index plat, and is assigned Page No. 808 in Book No. 1.

Mary Lee Niess
FEE: N/C County Official



BOOK 1 PAGE 808

Cross Index No. A-19 T. 6 N. R. 59 E., PMM
Z-19 T. 7 N. R. 59 E., PMM

Adopted July 1, 1981, Montana Board of Professional Engineers & Land Surveyors