

47815

INSTRUCTIONS

1. Original and/or subsequent record used to evaluate the corner position.
2. Description of evidence found, note discrepancies in the record, state method of establishing lost or obliterated corners.
3. Description of monument and accessories set to perpetuate the corner position.
4. Sketch of corner, show all pertinent data which can best be shown in a sketch example, corner marking, topography ties, position of accessories, etc.
5. Certification must be signed and sealed by Land Surveyor registered in the State of Montana.
6. Fill in Cross Index & Section Diagram at bottom of sheet.

CERTIFIED CORNER RECORDATION

SOUTHWEST SECTION

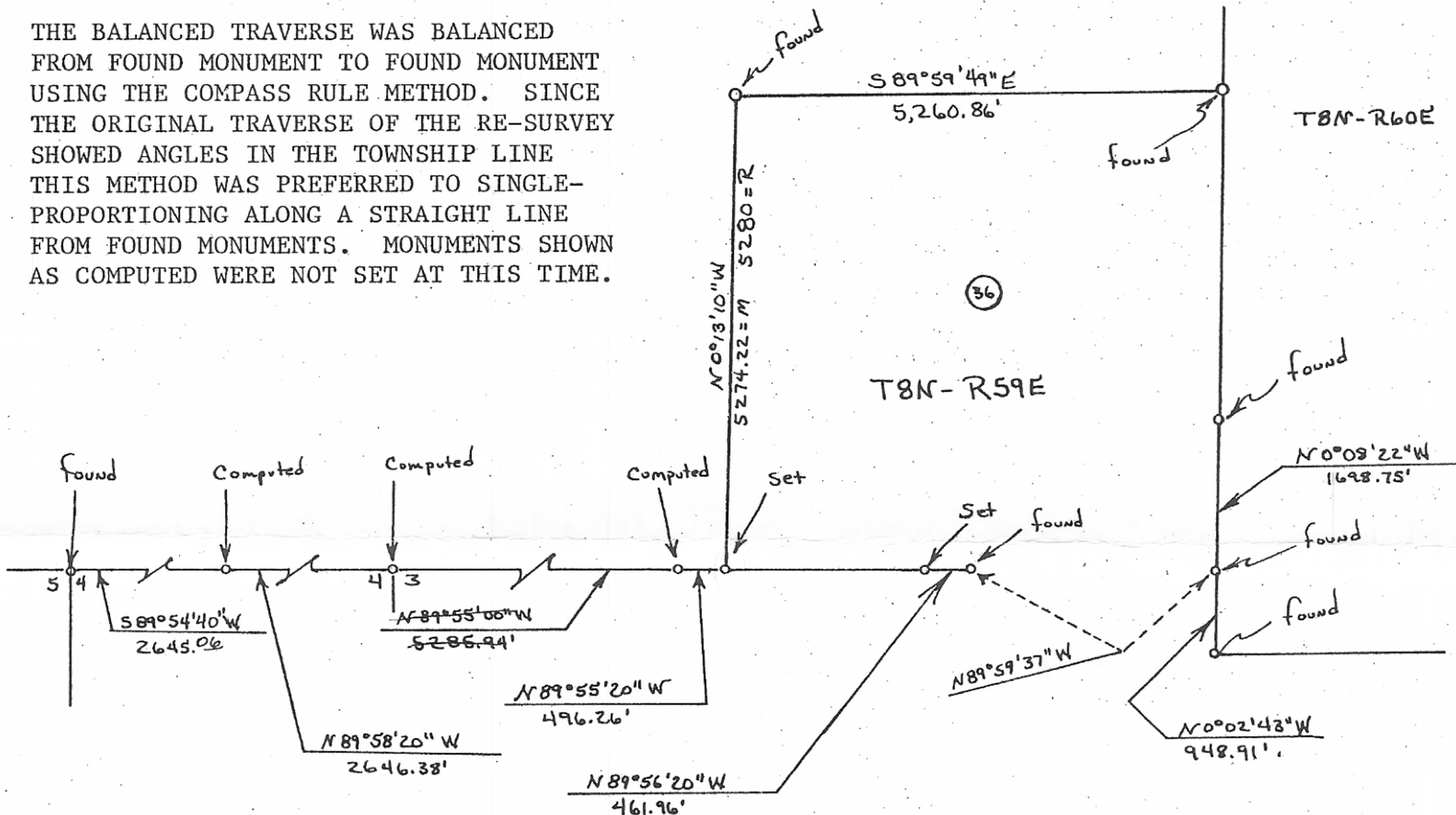
Corner SECTION 36 T. 8N R. 59E P.M.M. FALLON County

TRAVERSED RECORD DISTANCE (GLO RE-SURVEY) ALONG THE SOUTH TOWNSHIP LINE FROM THE NW SEC CORNER OF SEC. 2, T7N, R59E (Comp. Position). SET 5/8"x24" REBAR W/2" ALUMINUM CAP.

RECORD TRAVERSE FROM THE SOUTH QUARTER CORNER OF SECTION 36, T8N, R59E, TO THE NORTHEAST SECTION CORNER OF SECTION 5, T7N, R59E (GLO RECORD): N 89°57' W 462.00'; N 89°56' W 2647.26'; N 89°55' W 5285.94'; N 89°59' W 2646.60'; S 89°54' W 2645.28'.

BALANCED TRAVERSE FROM THE SOUTH QUARTER CORNER OF SECTION 36, T8N, R59E, TO THE NORTHEAST SECTION CORNER OF SECTION 5, T7N, R59E (GLO RECORD): N 89°56'20" W 461.96'; N 89°55'20" W 2647.04'; N 89°54'20" W 5285.51'; N 89°58'20" W 2646.38'; S 89°54'40" W 2645.06'.

THE BALANCED TRAVERSE WAS BALANCED FROM FOUND MONUMENT TO FOUND MONUMENT USING THE COMPASS RULE METHOD. SINCE THE ORIGINAL TRAVERSE OF THE RE-SURVEY SHOWED ANGLES IN THE TOWNSHIP LINE THIS METHOD WAS PREFERRED TO SINGLE-PROPORTIONING ALONG A STRAIGHT LINE FROM FOUND MONUMENTS. MONUMENTS SHOWN AS COMPUTED WERE NOT SET AT THIS TIME.



SKETCH OF CORNER

47815

T7N-R59E

CERTIFICATION

I, _____ certify the information herein is true and correct.

Signature Ground Party Chief

Charles W. Madler

I, _____ certify that this Corner Record correctly represents work performed by me or under my direction in compliance with the "Corner Record Act" (70-22-101, et seq., M.C.A.)

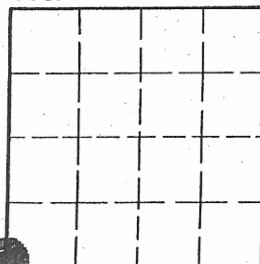
Signature of Surveyor & Seal

Date: 11-27-85 Reg. No. 73278

Employer: Professional Land Services

Office of Clerk and Recorder, County of Fallon. This "corner record" was filed for record on November 25, 1985 at 10:45AM was noted on the cross-index plat and is assigned page No. 285 in book No. 1 _____ in _____ County Official

Sec. 36



Fee: N/C

BOOK 1 PAGE 285

Cross Index No. Z-21

A17-18

T. 8N R. 59E P.M.M.

7 51

• - corner this sheet