

INSTRUCTIONS

1. Original and/or subsequent record used to evaluate the corner position.
2. Description of evidence found, note discrepancies in the record, state method of establishing lost or obliterated corners.
3. Description of monument and accessories set to perpetuate the corner position.
4. Sketch of corner, show all pertinent data which can best be shown in a sketch example, corner marking, topography ties, position of accessories, etc.
5. Certification must be signed and sealed by Land Surveyor registered in the State of Montana.
6. Fill in Cross Index & Section Diagram at bottom of sheet.

55716

BOOK

1 448

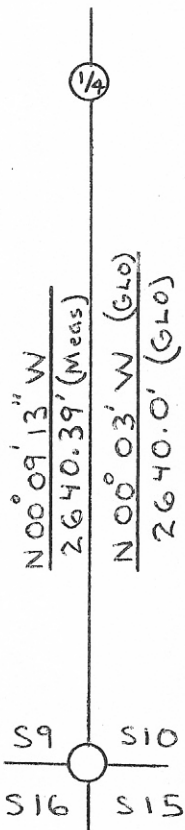
CERTIFIED CORNER RECORDATION

Corner West 1/4 Sec 10 T. 7 N R. 59 E P.M.M. Fallon County

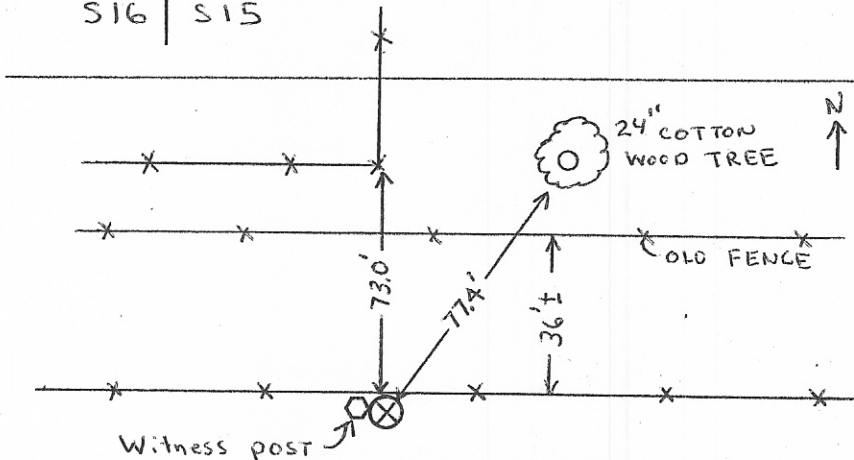
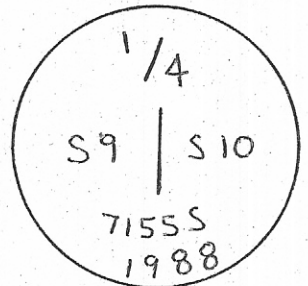
ORIGINAL RECORD: Set a sandstone 12x10x6 ins. 8 ins. in the ground for 1/4 sec, cor., marked 1/4 on West face; dig pits, 18x18x12 ins. North and south of stone 3 ft. dist; and raise a mound of earth, 3 1/2 ft. base, 1 1/2 ft. high, West of cor.

FOUND: Set sandstone by fence post.

SETS: Replaced stone with a 3 1/4" diam. aluminum cap on a 30" x 2 3/8" aluminum pipe.
Place stone upside down North of cap.
Placed a 5 1/2' galvanized steel post as a witness post West of cap.



Montana Department of Highways Aluminum Cap marked:



SKETCH OF CORNER 55716

CERTIFICATION

I, Quinn Wright
certify the information shown herein is true and correct.

Quinn Wright
Signature of Client

I, Jimmie L. Brewer
certify that this corner record correctly represents work performed by me or under my direction in compliance with the "Corner Recordation Act" (MCA 2-101, BREWER C.A.)

Jimmie L. Brewer
Signature of Surveyor & Seal

Date: 11/11/88

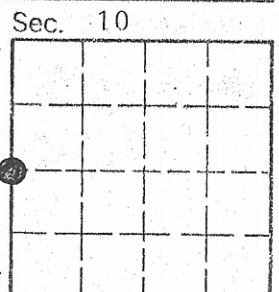
Employer: Prairie States Eng. Inc.

Office of Clerk and Recorder, County of Fallon. This "corner record" was filed for record on December 22, 1988 at 2:00 P.M.

was noted on the cross-index plat and is assigned page No. 448, in

book No. 1
Fee: N/C

Mary Lee Rieitz
County Official



Cross Index No. G-13 T. 7N R. 59E PMM

* - corner this sheet