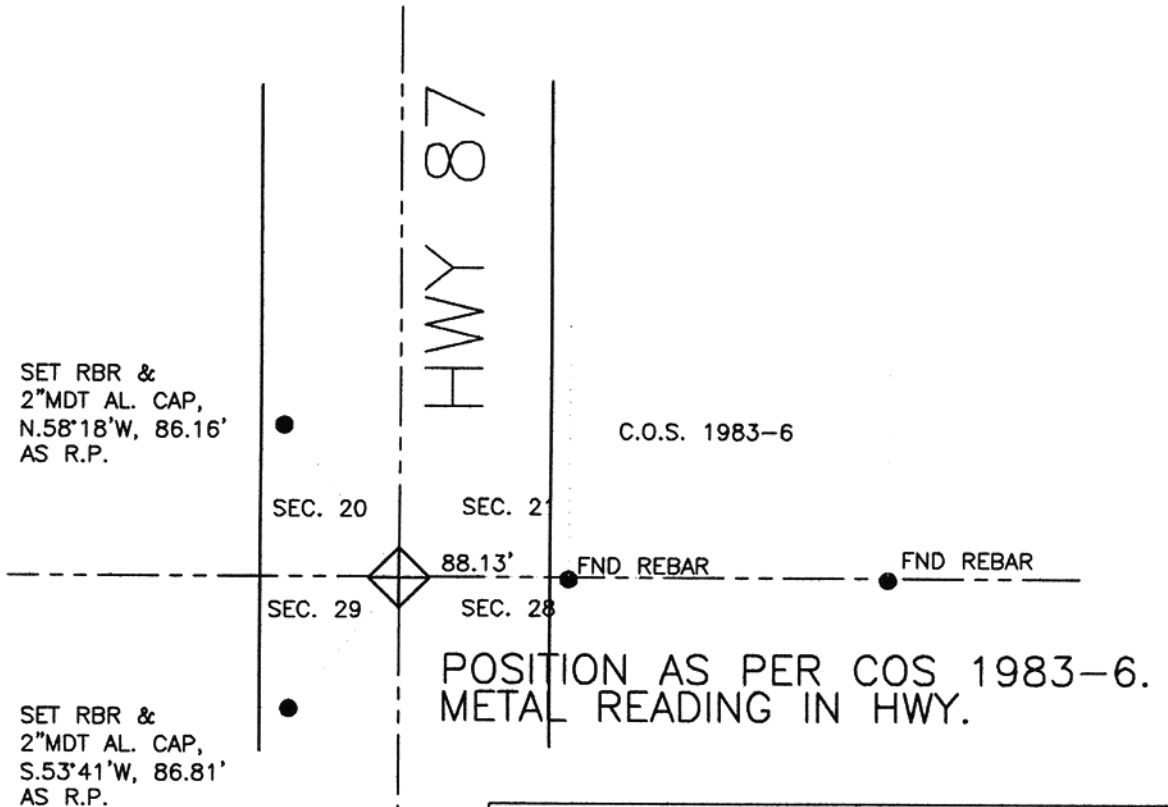


CERTIFIED CORNER RECORDATION

Corner SE Sec. 20 T.7 N. R.26 E. P.M.M. MUSSELSHELL County

ORIGINAL RECORD: SET A SANDSTONE 20x15x8 ins, 15" IN THE GROUND MARKED WITH 2 NOTCHES ON S. AND 4 NOTCHES ON E. EDGES.

EVIDENCE FOUND: NO EVIDENCE OF ORIGINAL MONUMENT AS IT FALLS IN CENTER OF SOUTHBOUND LANE OF U.S. HWY 191. AT A POINT 88.13 FT WEST OF THE SW CORNER OF COS 1983-6, THERE IS A METAL READING IN THE ASPHALT BELIEVED TO BE A REBAR AS SHOWN ON THE SAID COS. MONUMENT WAS NOT UNCOVERED DUE TO HWY TRAFFIC. TWO REFERENCES (RP's) WERE SET BASED ON CALCULATED POSITION AS SHOWN BELOW.



POSITION AS PER COS 1983-6.
METAL READING IN HWY.



CERTIFICATION

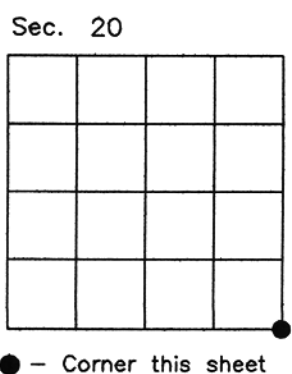
I, JAMES D. LEHMAN
certify the information shown herein is true and correct
[Signature]
Signature Ground Party Chief

I, DANIEL W. MCGEE
certify that this Corner Record correctly represents work performed by me or under my direction, in compliance with the "Corner Recordation Act" (70-22-101, et seq., M.C.A.)
[Signature]
Signature of Surveyor & Seal

Date: 6/17/02 Reg. No. 5157 S
Employer: HARP ENGINEERING INC.

SKETCH OF CORNER

Office of Clerk and Recorder, County of MUSSELSHELL. This "corner record" was 256225 Fee \$.00
was noted c MUSSELSHELL COUNTY
Recorded 06/17/2002 At 12:06 PM
By Jane E Mang, Clerk and Recorder
By Judith B Hawkins Deputy
County Official



Cross Index No. R.9 T.7 N. R.26 E. PMM