

INSTRUCTIONS

1. Original and/or subsequent record used to evaluate the corner position.
2. Description of evidence found, note discrepancies in the record, state method of establishing lost or obliterated corners.
3. Description of monument and accessories set to perpetuate the corner position.
4. Sketch of corner, show all pertinent data which can best be shown in a sketch example, corner marking, topography ties, position of accessories, etc.
5. Certification must be signed and sealed by Land Surveyor registered in the State of Montana.
6. Fill in Cross Index & Section Diagram at bottom of sheet.

CERTIFIED CORNER RECORDATION

Corner Sections 12, 13 & 18 T. 7 N. R. 14 & 13 W. P.M.M. Granite County

ORIGINAL RECORD: (1873 G.L.O.) Not recovered.

SUBSEQUENT RECORD: (1970 B.L.M.)

The cor. of secs. 7, 12, 13 and 18, monumented with a quartzite stone, 12 x 15 x 26 ins., firmly set 6 ins. in the ground, and mkd. 2 notches on the N. and 4 nothes on the S. edges.

This corner now becomes the cor. of secs. 12 and 13, only.

Set an iron post, 30 ins. long, 2 1/2 ins. diam., 24 ins. in the ground, with brass cap mkd. [as shown below] from which:

An XBO, chiseled 4 ft. above the ground, on a vertical granite cliff, 30 ft. high, extending N. and S., bears WEST, 5 lks. dist.

A fir, 14 ins. diam., bears N. 1 1/2° W., 34 lks. dist., mkd. T7N R14 W S12 BT.

bury the original stone alongside and raise a collar of stone, 3 ft. diam., around the iron post.

EVIDENCE FOUND: Found 3 1/4" Brass Cap, 0.9' above ground in mound of stone, from which:

A pine, 18 ins. diam., scribing visible, bears N2°E, 23.2 feet dist.

A pine, 14 ins. diam., scribing visible, bears S17°E, 22.0 feet dist.

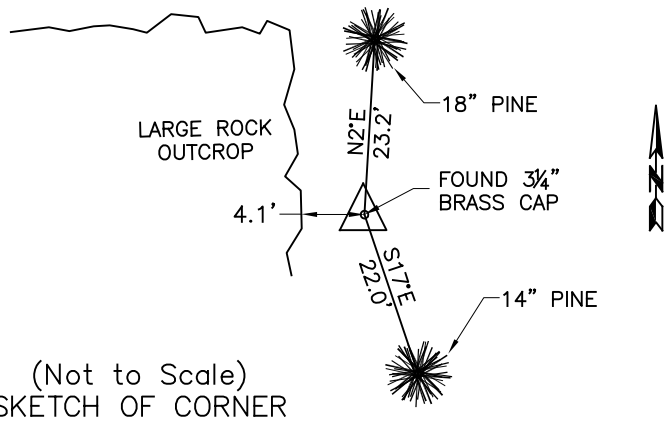
PERPETUATION: Placed BT tags on bearing trees.

Located on a 10% east facing slope.

Date of Survey: October, 2009.



NAD 83 coordinates for this corner:
 Latitude = 46°22'01.70419"N Longitude = 113°17'07.14902"W
 NOTE: These coordinates are to be used as a search tool only.



(Not to Scale)
 SKETCH OF CORNER

CERTIFICATION

I, Steve Cummings
 certify the information shown herein is true and correct.

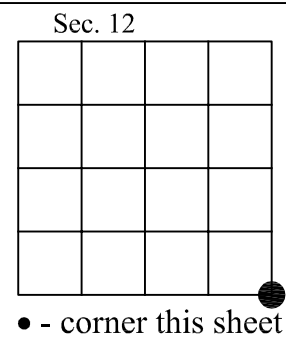
 Signature Ground Party Chief

I, Kurt A. Luebke
 certify that this Corner Record correctly represents work performed by me or under my direction in compliance with the "Corner Recordation Act" (70-22-101, et seq., M.C.A.)

 Signature of Surveyor & Seal

Date: 10-27-2009 Reg. No. 13237 S

Employer: DJ&A P. C.



Cross Index No. J-25 T. 7 N. R. 14 W. PMM