

CERTIFIED LAND CORNER RECORDATION

DESCRIPTION OF CORNER EVIDENCE FOUND, AND ORIGINAL RECORD (IF KNOWN)

ORIGINAL RECORD: A DIAGONAL CHARRED POST 4' LONG, NOTCHED WITH MOUND AND PITS.
ALSO REFERENCE STATE HIGHWAY 348 PROJECT NO. S127(2). SECTION CORNER AT STATION 398+69 AND 9.8 FEET TO THE RIGHT OF CENTERLINE.

FOUND: FENCELINE HEADING NORTH AT STATION 398.69 AND CENTERLINE OF HIGHWAY. USED THIS EVIDENCE TO REPOSITION CORNER.

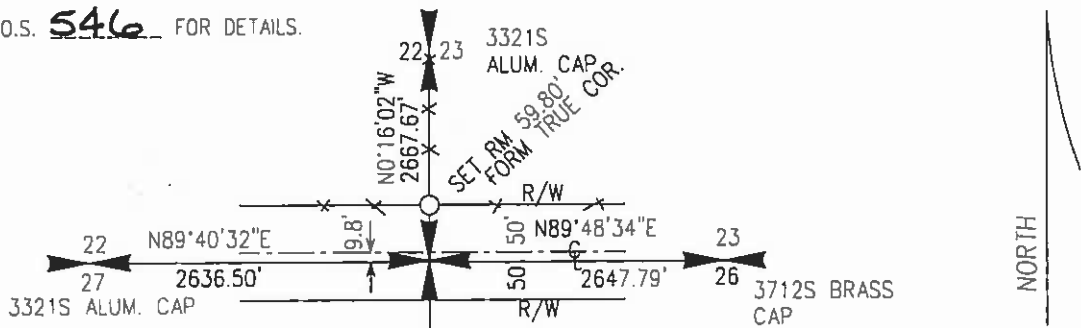
DESCRIPTION OF MONUMENT AND ACCESSORIES ESTABLISHED TO PERPETUATE THE ORIGINAL LOCATION OF THIS CORNER:

DATE OF WORK 1/98

Set 5/8 rebar with Aluminum cap as shown below. Pul M.A.R.L.S. sign on fence corner nearby.

SKETCH, WITH COURSE AND DISTANCE TO ADJACENT CORNERS IF DETERMINED IN THIS SURVEY, (MAY SKETCH OR PASTE REPRODUCTION ON REVERSE SIDE).

SEE C.O.S. 546 FOR DETAILS.



NOT TO SCALE

SURVEYOR'S SEAL

DIAGRAM OF CORNER:

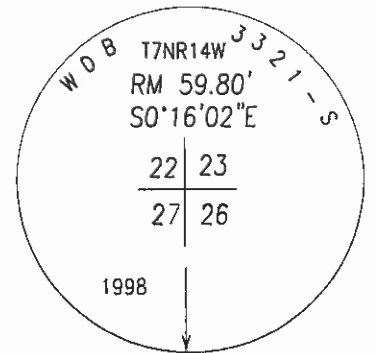
I, HANS BOHRNSEN, Certify that the information shown herein is true and correct.

Hans Bohrsen
Signature of ground party chief



I, William D. Bayer, certify that I have carefully performed or reviewed the work done on the diagrammed corner as reported on this recordation form and approve the same.

William D. Bayer
Signature of Surveyor
3321 S
Registration Number



SET REBAR WITH ALUMINUM CAP AS SHOWN ABOVE.

Office of Clerk and Recorder, County of Granite

This "corner record" was filed for record on the 2nd day of Feb, 1998, was noted on the cross index plat and is assigned page No. _____, in book No. _____ 2:54 PM

36649

Blanche Pederson
Signature of County Official

Cross Index No. R17 sec. 23,22,27,26 T 7N R 14W