

CERTIFIED LAND CORNER RECORDATION

DESCRIPTION OF CORNER EVIDENCE FOUND, AND ORIGINAL RECORD (IF KNOWN)

ORIGINAL RECORD: GEORGE IRVINE, 1873: 80 CHS. SET A SANDSTONE 16X9X5 IN. 10 IN. IN THE GROUND FOR COR TO SEC. 27,28,33,34, MKD. WITH 3 NOTCHES ON THE E AND 1 ON THE S. EDGES.

EVIDENCE FOUND: NO EVIDENCE OF ORIGINAL CORNER FOUND. APPROXIMATE POSITION LIES AT A 90° CORNER OF THE OLD COUNTY ROAD TO ANTELOPE CREEK.

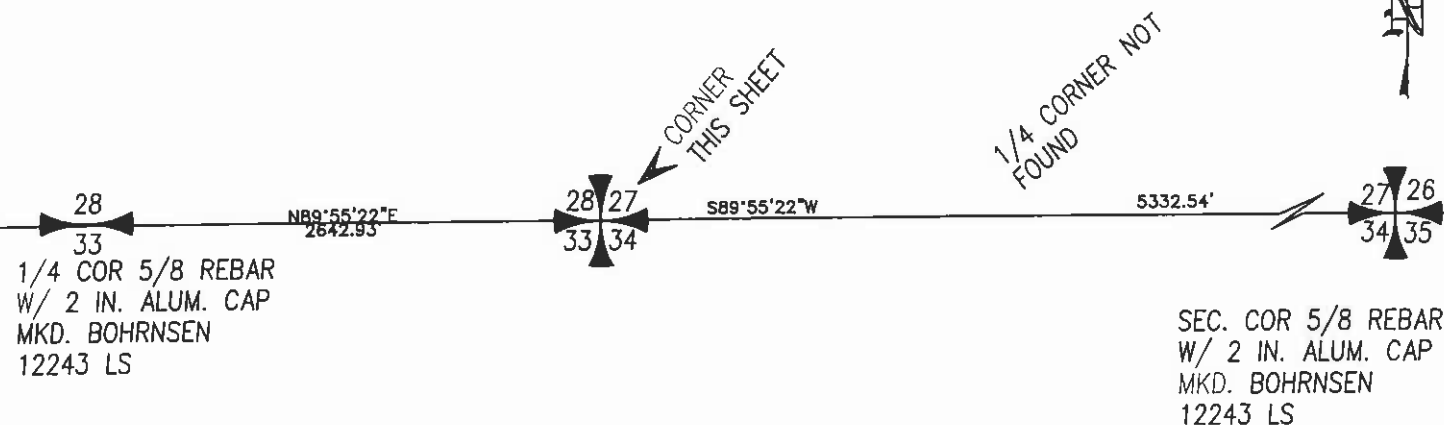
DESCRIPTION OF MONUMENT AND ACCESSORIES ESTABLISHED TO PERPETUATE THE ORIGINAL LOCATION OF THIS CORNER:

DATE OF WORK 10/02

USING THE COUNTY ROAD RIGHT-OF-WAY FENCES TO CONTROL THE EAST-WEST POSITION AND EXISTING CORNERS TO CONTROL THE NORTH-SOUTH POSITION (THESE AGREE WITH THE RIGHT-OF-WAY FENCE RUNNING OFF TO THE WEST) SET A 5/8X24 IN. REBAR W/ 2 IN. ALUM. CAP AS SHOWN BELOW. PLACED A YELLOW SIGN ON NEARBY FENCE COR WHICH BEARS N50°04'11"W, 43.09' FROM SECTION CORNER.

SKETCH, WITH COURSE AND DISTANCE TO ADJACENT CORNERS IF DETERMINED IN THIS SURVEY,

SEE C.O.S. _____
NO SCALE



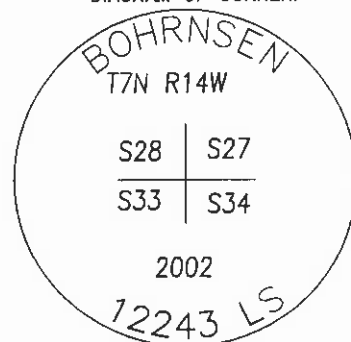
SURVEYOR'S SEAL



I, HANS BOHRNSEN, Certify that the information shown herein is true and correct.

Hans Bohrsen
HANS BOHRNSEN 12243 LS

DIAGRAM OF CORNER:

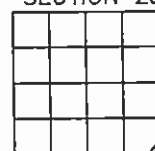


SET REBAR WITH ALUMINUM CAP AS SHOWN ABOVE.

047953 Roll - Page -
Recorded 04/07/2004 At 11:28 AM
BLANCHE PEDERSON, Cty Granite Clerk and Recorder
Fee: \$, By Blanche Pederson

Signature of County Official

● CORNER THIS SHEET



Cross Index No. V-13 sec. 28 T 7N R 14W