

INSTRUCTIONS

1. Original and/or subsequent record used to evaluate the corner position.
2. Description of evidence found, note discrepancies in the record, state method of establishing lost or obliterated corners.
3. Description of monument and accessories set to perpetuate the corner position.
4. Sketch of corner, show all pertinent data which can best be shown in a sketch example, corner marking, topography ties, position of accessories, etc.
5. Certification must be signed and sealed by Land Surveyor registered in the State of Montana.
6. Fill in Cross Index & Section Diagram at bottom of sheet.

CERTIFIED CORNER RECORDATION

Corner Sections 36, 1 & 6 T. 8 & 7 N. R. 13 & 12 W. P.M.M. Granite County

ORIGINAL RECORD: (1914 G.L.O.)  
 Set an iron post, 3 ft. long, 3 ins. in diam. 24 ins. in the ground, for cor. of Tps. 7 and 8, N. Rs. 12 and 13 W., marked on brass cap [as shown below] from which:  
 A fir, 9 ins. in diam. bears S.12°E., 100 lks. dist., mkd. T 7 N R 12 W S 6 BT.,  
 and raise a mound of stone 2 ft. base, 1½ ft. high, S. of cor.

SUBSEQUENT RECORD: None

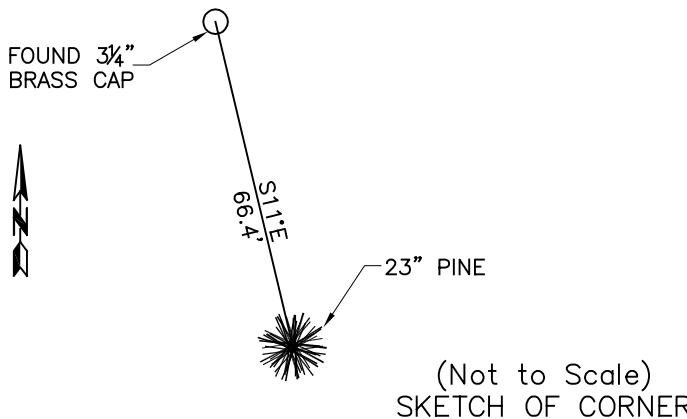
EVIDENCE FOUND: Found 3 ¼" Brass Cap, 1.3' above ground and severely leaning easterly (downhill), on west facing 30% slope, from which:  
 A pine, 23 ins. diam., blazed, bears S11°E, 66.4 ft. dist.

PERPETUATION: Affixed MARLS tag to 23 ins. pine.

Date of Survey: September, 2009.



NAD 83 coordinates for this corner:  
 Latitude = 46°23'44.91211"N Longitude = 113°09'37.14518"W  
 NOTE: These coordinates are to be used as a search tool only.



CERTIFICATION

I, Steve Cummings  
 certify the information shown herein is true and correct.

\_\_\_\_\_  
 Signature Ground Party Chief

I, Kurt A. Luebke  
 certify that this Corner Record correctly represents work performed by me or under my direction in compliance with the "Corner Recordation Act" (70-22-101, et seq., M.C.A.)

\_\_\_\_\_  
 Signature of Surveyor & Seal

Date: 10-27-2009 Reg. No. 13237 S

Employer: DJ&A P. C.

Sec. 36


● - corner this sheet

Cross Index No. Z-25 T. 8 N. R. 13 W. PMM  
 Cross Index No. A-1 T. 7 N. R. 12 W. PMM  
 Cross Index No. A-25 T. 7 N. R. 13 W. PMM