

D. INSTRUCTIONS

1. Original and/or subsequent record used to evaluate the corner position.
2. Description of evidence found, note discrepancies in the record, state method of establishing lost or obliterated corners.
3. Description of monument and accessories set to perpetuate the corner position.
4. Sketch or corner, show all pertinent data which can best be shown in a sketch example, corner marking, topography ties, position of accessories, etc.
5. Certification must be signed and sealed by Registered Land Surveyor in State of Montana.
6. Fill in Cross Index & Section Diagram at bottom of sheet.

**CERTIFIED CORNER RECORDATION**

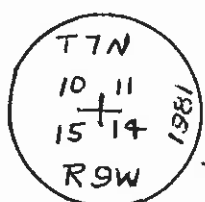
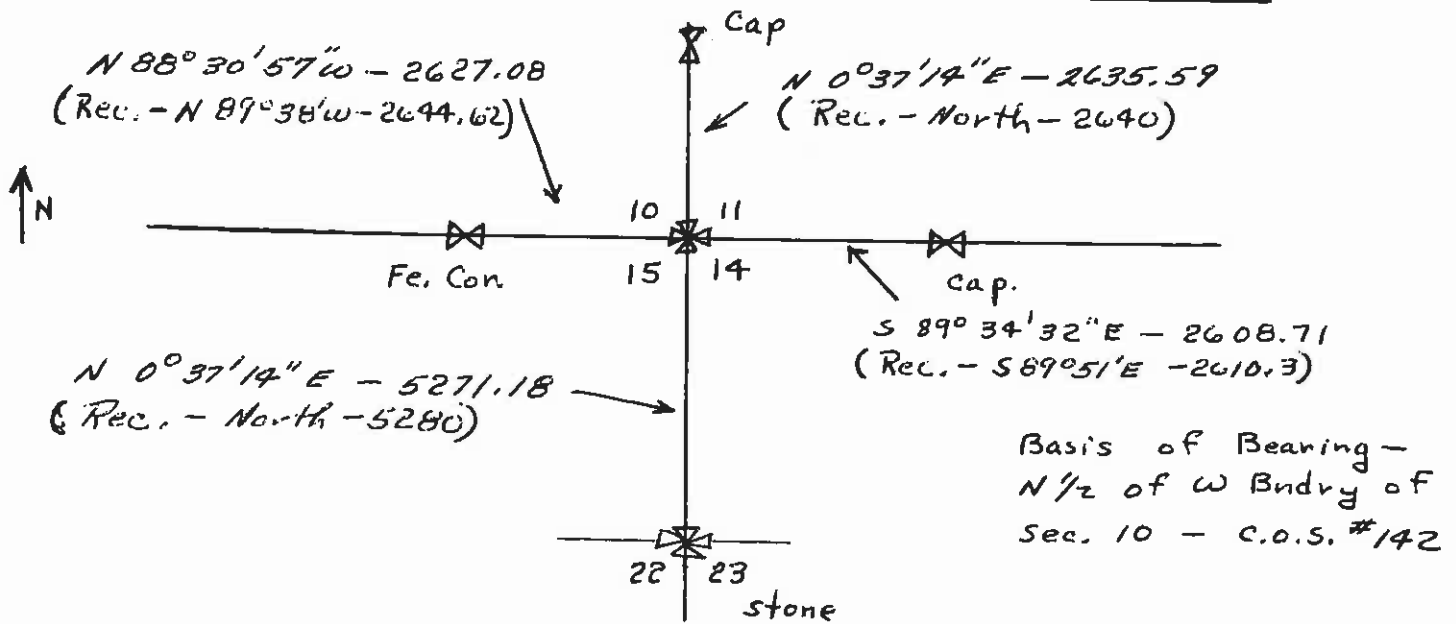
Corner SE Cor. - Sec 10 T. 7N R. 9W P.M.M. Powell County

Orig 1868 field notes - a post in mound of earth with pits chawed stake (etc) as per instructions.

No Marker found.

Found set stone 1 mi. south for SE Cor. of Sec. 15 & found old fence lines in the vicinity of the east 1/4 Cor of Sec. 10 (No marker found). Proportioned location between the two sites mentioned placed the Sec. Cor. in a position to match the orig. field notes - (1 chain south to a road & 2 chains south to the top of a rise)

I set a new 5/8" x 24" rebar with a 2" dia. Alum. Cap stamped "Masters 821 S" for the Sec. Cor. Marker & a 4" square Marker Tag on a Railroad Tie fence Post - SE 14.3 ft from the Cor.



109210

SKETCH OF CORNER

Tag on RR Tie fe Post.

CERTIFICATION

I, \_\_\_\_\_ certify the information shown herein is true and correct.

Signature Ground Party Chief

RAY G. MASTERS

I, \_\_\_\_\_ certify that this Corner Record correctly represents work performed by me or under by direction in compliance with the "Corner Recordation Act" (70-22-101 et seq., M.D.A.)

Ray G. Masters  
Signature of Surveyor & Seal

Date: 10-15-81 Reg. No. 821 S

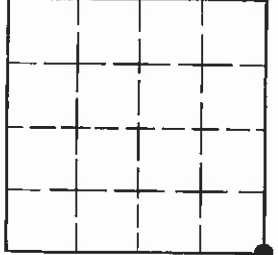
Employer: Self

Office of Clerk and Recorder, County of Powell. This "corner record" was filed for record on the December 22, day of 1981 @ 1:30 P.M. was noted on the cross-index plat and is assigned page No. \_\_\_\_\_, in book No. \_\_\_\_\_

County Official

Cross Index No. J 17 T. 7N R. 9W P.M.M.

Sec. 10



• corner this sheet