

CERTIFIED CORNER RECORDATION

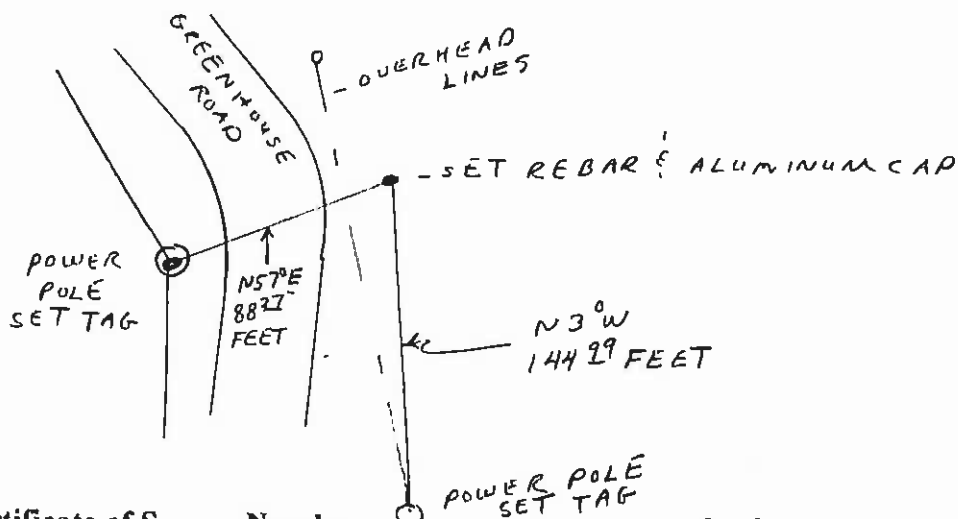
Corner NW COR SEC 16 T. 7 N., R. 9 W., P.M.M. POWELL County

Original: POST IN MOUND WITH PITS

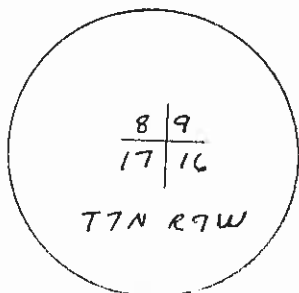
Subsequent: REBAR & ALUMINUM CAP WITH 2"X4" SET IN CATTAIL SLOUGH PER COUNTY CORNER RECORD FILED BY RAY G. MASTERS

Evidence: FOUND 2"X4" BOARD 8" SUB IN SLOUGH, FND BROKEN REBAR ADJACENT TO 2"X4", ALSO FOUND 8" REBAR & CAP BROKEN FROM PIECE IN GROUND ABOUT 1/2 FEET FROM 2"X4". DISTANCE TO REBAR 1 MILE SOUTH IS A MATCH TO FOUND 2"X4". ACCEPTED EVIDENCE AS MONUMENT AS SET BY MASTERS

Perpetuation: SET REBAR & CAP AT 2"X4" & BROKEN REBAR & SET MARLS TAGS AS INDICATED ON SKETCH



See Certificate of Survey Number _____ for further information



Sketch of Corner

145212

CERTIFICATION

I, MORRIS A. ZAHN

certify the information shown herein is true and correct

Morris A. Zahn
Signature of Ground Party Chief

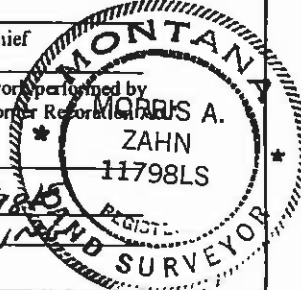
I, MORRIS A. ZAHN

certify that this Corner Record correctly represents work performed by me or under my direction in compliance with the "Corner Record Act" (70-22-101 & seq., M.C.A.)

Morris A. Zahn
Signature of Surveyor & Seal

Date: 5/11/98 Reg. No. 11798LS

Employer: ARROWHEAD SURVEYING AND



Section 16

Office of Clerk and Recorder, County of Powell

This "corner record" was filed for record on May 19th, 1998 @ 1:55 P.M.

was noted on the cross-index plat and is assigned page No. _____

in book No. _____

N/C

County Official

Cross Index No. J-9

T. 7 N., R. 9 W., PMM

THIS CORNER