

CERTIFIED LAND CORNER RECORDATION

DESCRIPTION OF CORNER EVIDENCE FOUND, AND ORIGINAL RECORD (IF KNOWN)

East 1/4 corner Section 26, Township 6 North, Range 26 East, P.M.M. Found mound of stone with square head bolt 6" above ground in place: Found bearing tree bearing South 15° East a distance of 48 links marked "1/4 S. 25 B.T. Found bearing tree bearing South 52° West a distance of 67 links marked "1/4 S. 26 B.T. Found 120d spike set by others a distance of 54.75' Northwesterly (See sketch on reverse side)

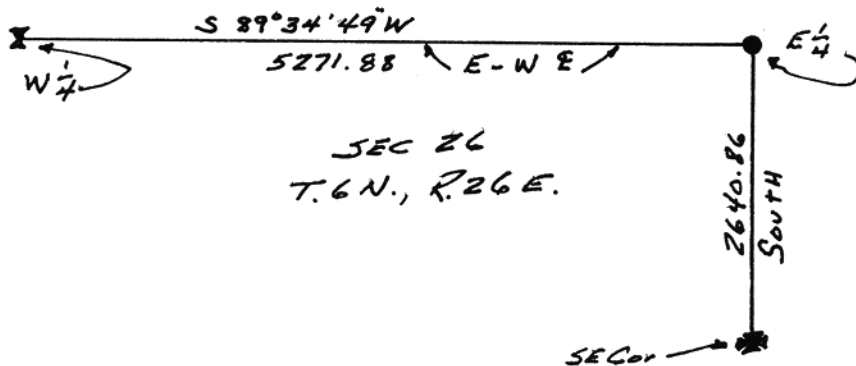
DESCRIPTION OF MONUMENT AND ACCESSORIES ESTABLISHED TO PERPETUATE THE ORIGINAL LOCATION OF THIS CORNER:

See opposite side

Date of work:.....

STATE OF MONTANA, } ss. MUSSELSHELL COUNTY. } FILED THIS 13 DAY OF Nov A. D. 1913 AT 2:28 O'CLOCK P.M. Claude J. Fletcher COUNTY RECORDER DEPUTY

SKETCH, WITH COURSE AND DISTANCE TO ADJACENT CORNERS IF DETERMINED IN THIS SURVEY. (MAY SKETCH OR PASTE REPRODUCTION ON REVERSE SIDE.)

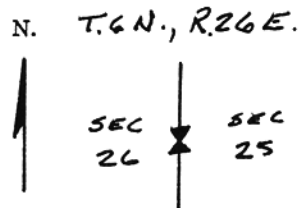


Surveyor's Seal

I, Lester L. Muhlbeier certify that the information shown herein is true and correct. Signature of Ground Party Chief

I, Harlan M. Lund certify that I have carefully performed or reviewed the work done on the diagrammed corner as reported on this recordation form and approve the same. Signature of Surveyor

DIAGRAM OF CORNER:



= Corner recorded on the sheet

1827 S Registration Number

Office of Clerk and Recorder, County of.....

This "corner record" was filed for record on the day of 19....., was noted on the cross-index plat and is assigned page No....., in book No.....

County Official

Cross Index No. T-21 T. 6 N R. 26 E Mer.