

INSTRUCTIONS

1. Original and/or subsequent record used to evaluate the corner position.
2. Description of evidence found, note discrepancies in the record, state method of establishing lost or obliterated corners.
3. Description of monument and accessories set to perpetuate the corner position.
4. Sketch of corner, show all pertinent data which can best be shown in a sketch example, corner marking, topography (ies), position of accessories, etc.
5. Certification must be signed and sealed by Land Surveyor registered in the State of Montana.
6. Fill in Cross Index & Section Diagram at bottom of sheet.

CERTIFIED CORNER RECORDATION

Corner 16/15 21/22 T. 6N R. 26E P.M.M. MUSSELSHELL County

ORIGINAL RECORD: GLO - 1904 - FREDRICK L. CUMMING SET A SANDSTONE 22" X 15" X 8", 16" IN THE GROUND MARKED WITH 3 NOTCHES ON SOUTH & EAST EDGES. RAISED A 2' X 1 1/2 HIGH STONE MOUND ON WEST SIDE OF CORNER.

Recordation: NW Cor S22 T6N R26E

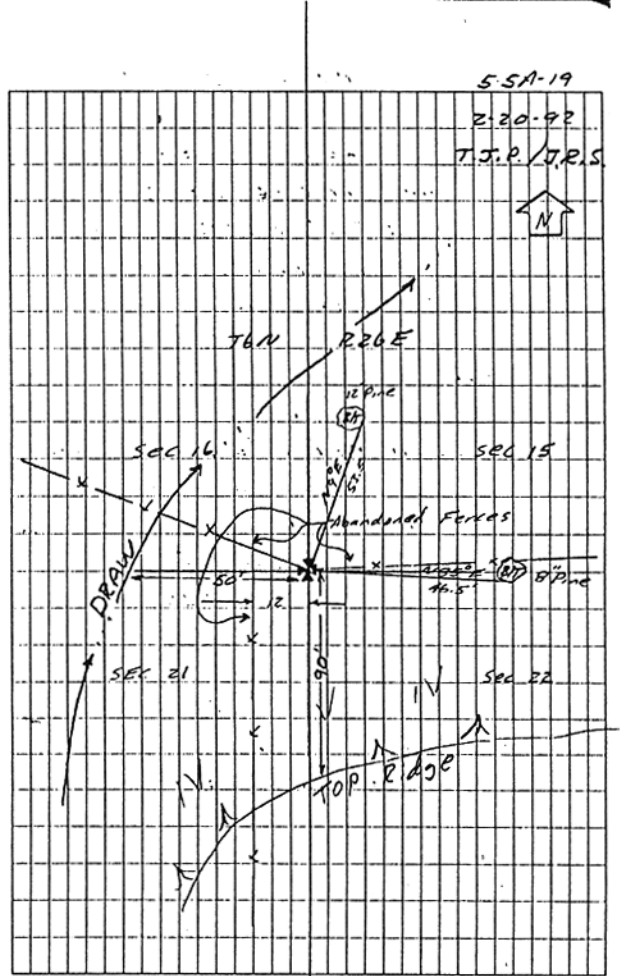
Found: Sandstone Block in Ground Level 14" x 14" x 8" with 3 notches to the East, 3 notches to the South. Lower half of stone set straight & firm in the ground.

Perpetuation:

At the exact position of stone, set a #6 rebar 30" in length 20" in the ground with an MM/CSSA 3/4" Alum Cap Marked:

T6N R26E
S16 S15
S21 S22
1992

- Buried Stone face down & East of monument.
- Raised a collar of stone 3ft high & 3ft @ base
- Two B/T'S Blazed & Scribed, T6N R26E S15. B/T: 12" P. Pine Bears N9°E 53.5' DIST. 18" P. Pine Bears N85°E 46.5' DIST.
- Corner lies 90' north of ridge & 50' East of Draw.
- Land is rolling with scattered P. Pine.
- Placed MARLS. TAGS on B/T'S



CERTIFIED BY JOEL SPRING LAND SURVEYOR

I, GERALD A. JAVLICK certify the information shown hereon is true and correct.

Gerard A. Javlick
Signature of Party

I, Gerard A. Javlick certify that this Corner Record was prepared and filed by me or under my direction in accordance with the Corner Recordation Act" (70-22-101, et seq.)

Donald A. Farber
Signature of Surveyor & Seal

Date: 4/2/92 Reg. No. 4382-S

Employer: MORRISON MAIERLE/CSSA

SKETCH OF CORNER

Office of Clerk and Recorder, County of _____ . This "corner record" was filed for record on 4-13-92 at 10:30 AM was noted on the cross-index plat and is assigned page No. _____, in book No. _____

Jane E. Mang
Glenda Schuab
County Official

