

INSTRUCTIONS

1. Original and/or subsequent record used to evaluate the corner position.
2. Description of evidence found, note discrepancies in the record, state method of establishing lost or obliterated corners.
3. Description of monument and accessories set to perpetuate the corner position.
4. Sketch or corner, show all pertinent data which can best be shown in a sketch example, corner marking, topography ties, position of accessories, etc.
5. Certification must be signed and sealed by Registered Land Surveyor in State of Montana.
6. Fill in Cross Index & Section Diagram at bottom of sheet.

CERTIFIED CORNER RECORDATION

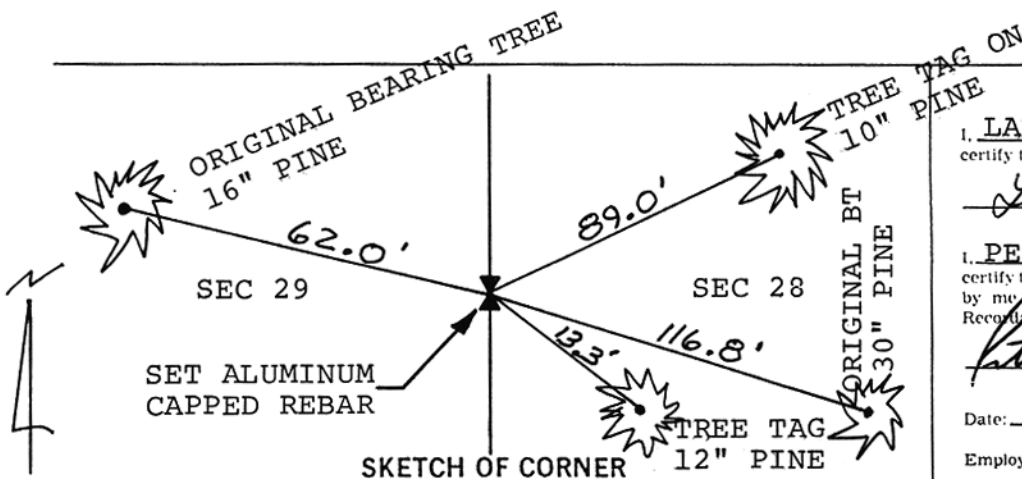
Corner EAST 1/4 COR. SECTION 29 T. 6 N R. 25 E P.M.M. MUSSELSHELL County

RECORD: 1904 GLO SURVEY - "set a sandstone 15X12X6 ins 10 ins in the ground for the 1/4 cor to Secs 28 and 29 marked 1/4 on W face from which:
 A 24" pine bears S38°E a dist of 1.77chs marked 1/4 S 28 BT
 A 12" pine bears N54°W a dist of 94 lks marked 1/4 S 29 BT

FOUND: A 30" pine and a 16" pine both blazed and scribed as described above.
 The original stone monument was not recovered.

SET: A 5/8" X 24" rebar with a 1-1/2" aluminum cap was set at the record distance from the two found bearing trees.

SEE CERTIFICATE OF SURVEY No. 1993-3 FOR TIES TO ADJACENT CORNERS.



CERTIFICATION

I, LARRY RESCH
 certify the information shown herein is true and correct.
Larry Resch
 Signature Ground Party Chief

I, PETER B. KNAPP
 certify that this Corner Record correctly represents work performed by me or under my direction in compliance with the "Corner Recordation Act" (70-22-10), et seq., M.D.A.
Peter B. Knapp
 Signature of Surveyor & Seal

Date: 5/93 Reg. No. 8377-S
 Employer: ENGINEERING, INC.

Office of Clerk and Recorder, County of Musselshell. This "corner record" was filed for record on the May 20 8:47 AM day of 1993 was noted on the cross-index plat and is assigned page No. _____, in book No. _____
 by Jane E Mang
Noma M Weigmann
 County Official

