

INSTRUCTIONS

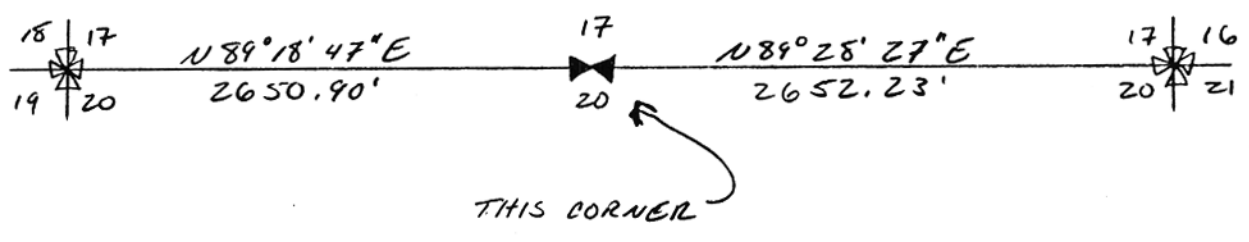
1. Original and/or subsequent record used to evaluate the corner position.
2. Description of evidence found, note discrepancies in the record, state method of establishing lost or obliterated corners.
3. Description of monument and accessories set to perpetuate the corner position.
4. Sketch of corner, show all pertinent data which can best be shown in a sketch example, corner marking, topography ties, position of accessories, etc.
5. Certification must be signed and sealed by Land Surveyor registered in the State of Montana.
6. Fill in Cross Index & Section Diagram at bottom of sheet.

239090

CERTIFIED CORNER RECORDATION

Corner 1/4 SECS 20 & 17 T. 6N R. 25E P.M.M. MUSSELSHELL County

- 1) ORIGINAL RECORD PER G.L.O SURVEY 1904: SET A SANDSTONE 22" X 15" X 8", 16" IN THE GROUND FOR 1/4 SEC COR MARKED 1/4 ON N FACE FROM WHICH A PINE 15" DIAM BEARS N30 3/4° E 225' DIST MARKED 1/4 S 17 B.T. A PINE 8" DIAM BEARS S 45 1/4° W, 99' DIST MARKED 1/4 S 20 B.T.
- 2) NO STONE FOUND. FOUND BEARING TREE STUMPS AT RECORD DISTANCES. RE-ESTABLISHED CORNER BY DISTANCE/DISTANCE INTERSECTION PER B.T. STUMPS. RE-ESTABLISHED CORNER FALLS IN LINE WITH OLD LINE OF FENCE POSTS EAST OF CORNER.
- 3) SET 5/8" REBAR WITH 1 1/2" STAMPED ALUM CAP. RAISED MOUND OF STONE AROUND CORNER. CORNER FALLS IN BOTTOM OF SMALL GRASSY DRAW.



SKETCH OF CORNER

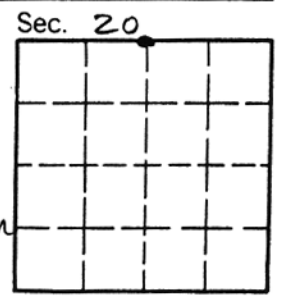
CERTIFICATION

I, William H. Karas
certify the information shown herein is true and correct.
William H. Karas
Signature Ground Party Chief

I, NEIL A. BRATTON JR
certify that this Corner Record correctly represents work performed by me or under my direction in compliance with the "Corner Recordation Act" (70-22-201, et seq., M.C.A.)
Neil A. Bratton Jr
Signature of Surveyor & Seal

Date: 6/10/94 P. Reg. No. 9519LS
Employer: 19 LS

Office of Clerk and Recorder, County of Musselshell
 record" was filed for record on June 29, 1994 11:45 AM
 was noted on the cross-index plat and is assigned page No. _____, in
 book No. _____ JANE E. MANG by Norma M. Wopman
 County Official



Cross Index No. N-7 T. 6N R. 25E P.M.M. • - corner this sheet