

76564

1-2005

# CERTIFIED CORNER RECORDATION

Corner SW SECTION 31 T. 6N R. 19E P.M.M. GOLDEN VALLEY County  
NW SECTION 6 5N 19E  
NE SECTION 1 5N 18E

**ORIGINAL RECORD:** (Unknown, Prior to 1877) A Sandstone 26 x 17 x 3 in. set 14 ins. in the ground with 6 notches on all 4 faces, and pits 24 x 18 x 12 ins. in each of the townships 6 ft distant.

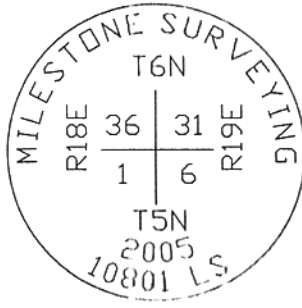
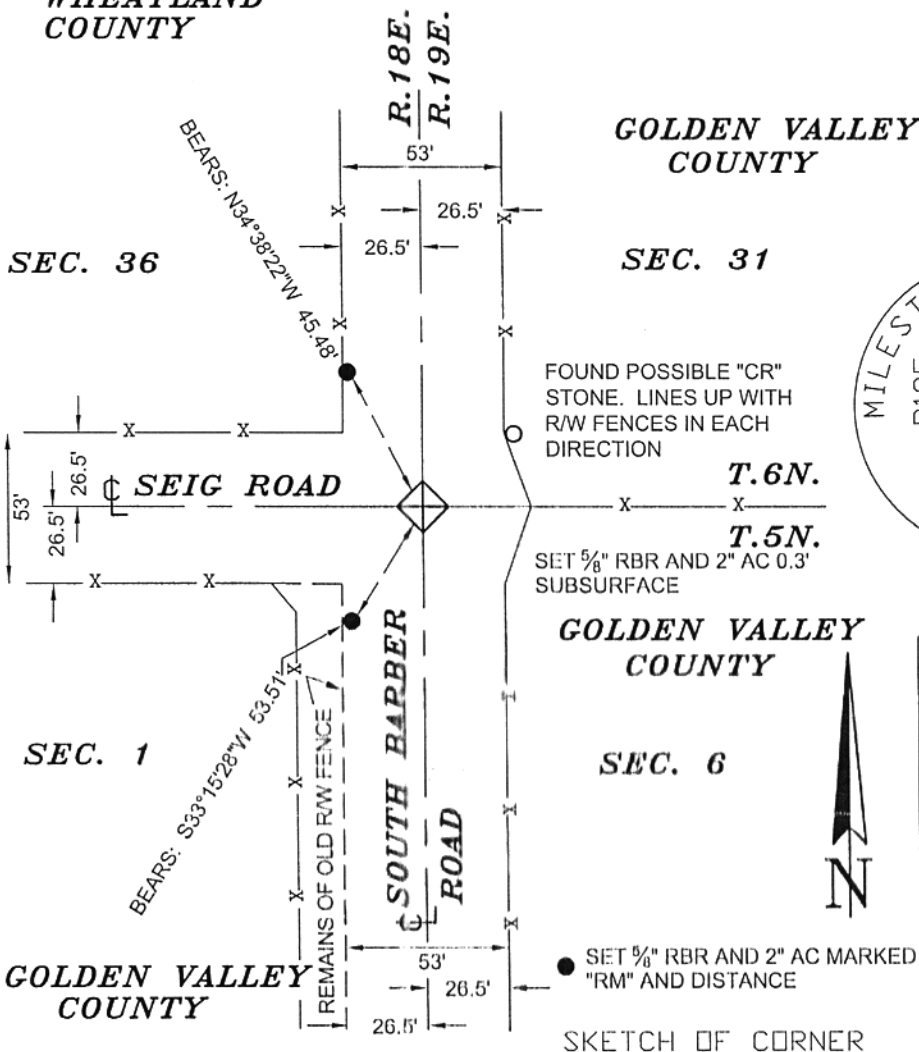
**SUBSEQUENT RECORD:** No subsequent record.

**EVIDENCE FOUND:** (February, 2005) No original evidence found. The corner falls at the intersection of county roads N-S x W.

**PERPETUATION:** (February, 2005) Set a 5/8" rebar and 2" aluminum cap at the centerline intersection of a N-S county road a county road to the West and in line with a fence to the East. The corner was set 0.3' subsurface and set reference monuments as shown below.

WHEATLAND COUNTY

GOLDEN VALLEY COUNTY



05-633

CERTIFICATION

I, \_\_\_\_\_, certify the information shown herein is true and correct.

Signature Ground Party Chief

Scott C. Koterba

I, \_\_\_\_\_, certify that this Corner Record correctly represents work performed by me or under my direction in compliance with the "Corner Recordation Act" (70-22-101, et seq., M.C.A.)

Signature of Surveyor & Seal

Date 2/22/05 Reg. No. 10801 LS

Employer: Milestone Surveying

Office of Clerk and Recorder, County of Golden Valley. This "corner record" was filed for record on February 28, 2005 was noted on the cross-index plat and is assigned page No. 1-2005, in book No. 3 Kathleen Ott, Clerk/Recorder

Sec. 31


Cross Index No. Z-1 T. 6N R. 19E P.M.M.  
A-1 5N 19E  
A-25 5N 18E

● corner this sheet