

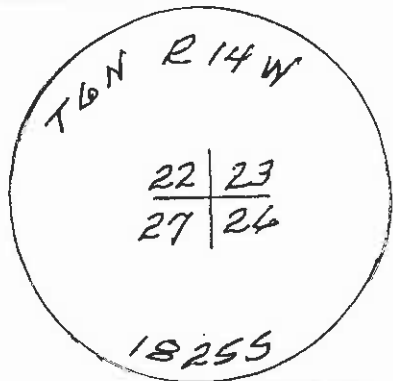
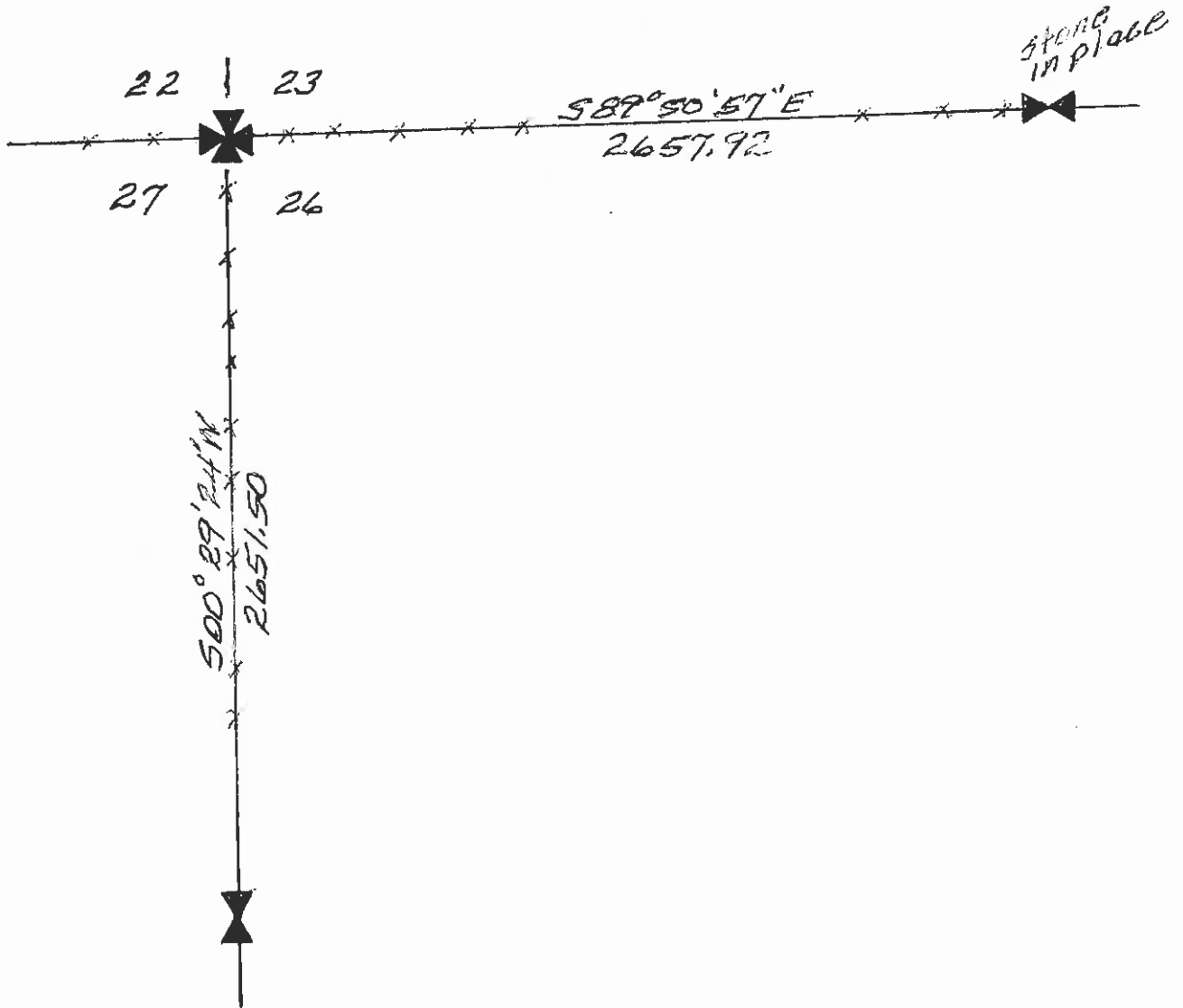
INSTRUCTIONS

1. Description of monument and accessories set to perpetuate the corner position.
2. Description of evidence found, note discrepancies in the record, state method of establishing lost or obliterated corners.
3. Description of monument and accessories set to perpetuate the corner position.
4. Sketch of corner, show all pertinent data which can best be shown in a sketch example, corner marking, topography ties, position of accessories, etc.
5. Certification must be signed and sealed by Land Surveyor registered in the State of Montana.
6. Fill in Cross Index & Section Diagram at bottom of sheet.

CERTIFIED CORNER RECORDATION

Corner Section T. 6 N R. 14 W P.M.M. Granite County

Original corner not found. Used fence running south and east-west for position of corner. Set 2" almm. cap on 5/8" rebar for corner



SKETCH OF CORNER

CERTIFICATION

I, _____ certify the information shown herein is true and correct

Signature Ground Party Chief

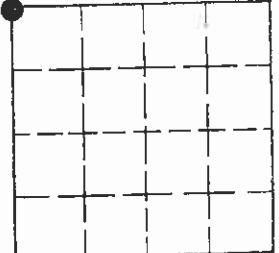
I, Matt J. Vranish certify that this Corner Record correctly represents work performed by me or under my direction in compliance with the "Corner Recordation Act" (70-22-101, et seq.) M.C.A.

Matt J. Vranish
Signature of Surveyor & Seal

Date: 9-5-85 Reg. No. 18255

Employer: self

Sec. 26



• - corner this sheet

Office of Clerk and Recorder, County of Granite. This "corner record" was filed for record on September 6, 1985 was noted on the cross-index plat and is assigned page No. _____, in book No. _____

Maria Morrison
County Official

Cross Index No. R-17 T. 6 R. 14 P.M.M.