

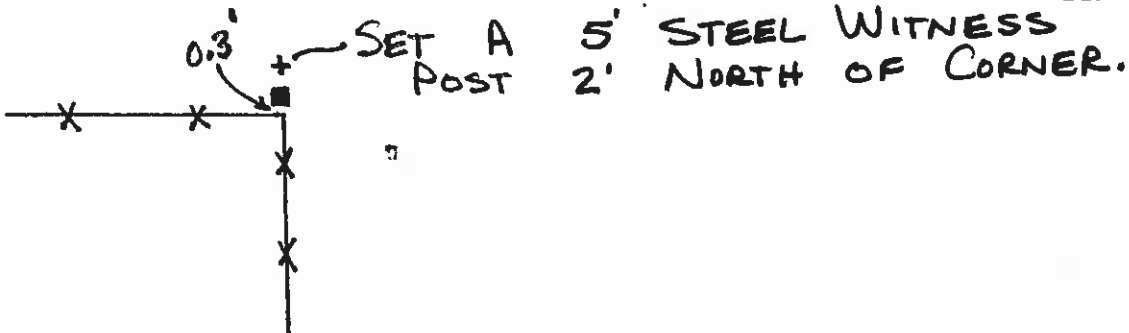
**CERTIFIED LAND CORNER RECORDATION**

DESCRIPTION OF CORNER EVIDENCE FOUND, AND ORIGINAL RECORD (IF KNOWN)

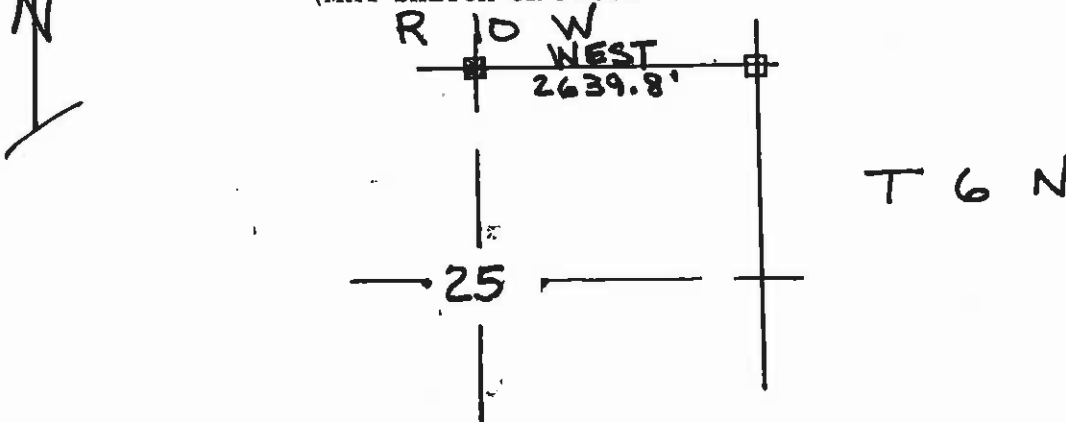
FOUND - DARK GREY SET STONE 7" X 8" X 9" A.G.  
 MARKED WITH  $\frac{1}{4}$  ON NORTH SIDE.

DESCRIPTION OF MONUMENT AND ACCESSORIES ESTABLISHED  
 TO PERPETUATE THE ORIGINAL LOCATION OF THIS CORNER:

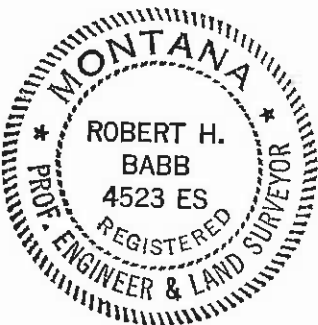
Date of work: 3/8/84



SKETCH, WITH COURSE AND DISTANCE TO ADJACENT CORNERS IF DETERMINED IN THIS SURVEY.  
 (MAY SKETCH OR PASTE REPRODUCTION ON REVERSE SIDE.)



Surveyor's Seal



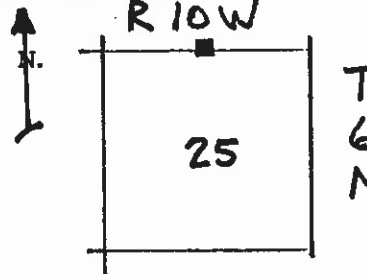
I, Michael Zancanella  
 certify that the information shown herein is true and correct.

Michael Zancanella  
 Signature of Ground Party Chief

I, ROBERT H. BABB  
 certify that I have carefully performed or reviewed the work done on the diagrammed corner as reported on this recordation form and approve the same.

Robert H. Babb  
 Signature of Surveyor

DIAGRAM OF CORNER:



■ = Corner recorded on the sheet

4523 ES  
 Registration Number

Office of Clerk and Recorder, County of DEER LODGE

This "corner record" was filed for record on the 5<sup>th</sup> day of April 1984, was noted on the cross-index plat and is

assigned page No. 249, in book No. 2

Merouah Jones, Deputy  
 County Official

Cross Index No. R-23 T. 6N R. 10W P. Mer. 1