

INSTRUCTIONS

1. Original and/or subsequent record used to evaluate the corner position.
2. Description of evidence found, note discrepancies in the record, state method of establishing lost or obliterated corners.
3. Description of monument and accessories set to perpetuate the corner position.
4. Sketch of corner, show all pertinent data which can best be shown in a sketch example, corner marking, topography ties, position of accessories, etc.
5. Certification must be signed and sealed by Land Surveyor registered in the State of Montana.
6. Fill In Cross Index & Section Diagram at bottom of sheet.

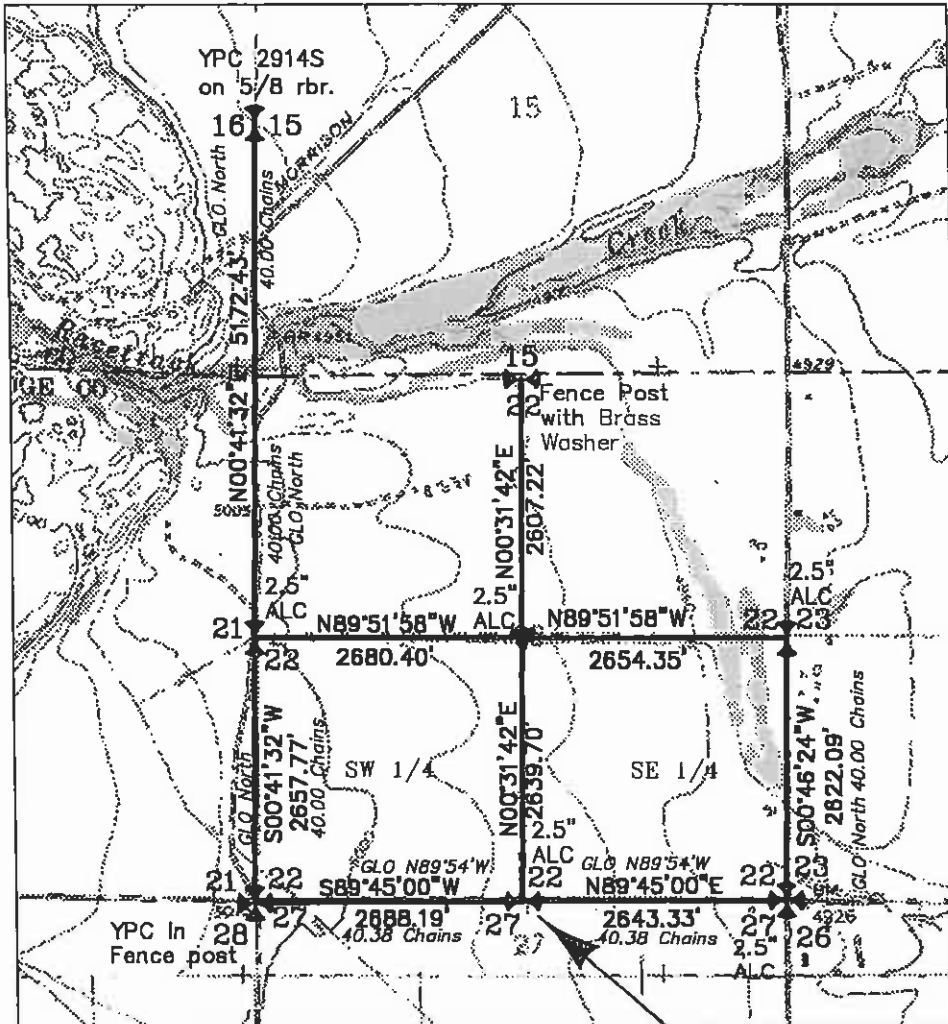
CERTIFIED CORNER RECORDATION

1/4 Corner Section 22/27, Township 6 North, Range 10 West, P.M.M., Deer Lodge County

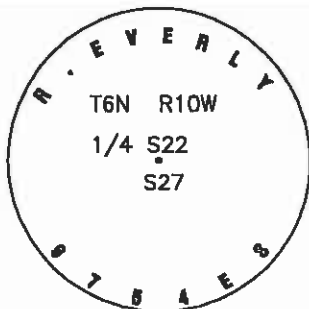
Record, GLO 1868: 40.38 Set 1/4 sec cor. a post in mound of earth with pits charred stake & as per instructions.

Found: No trace of original monument or accessories.

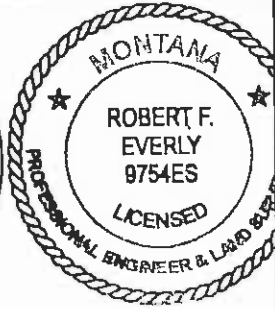
Re-established: The corner point at a point of intersection with the line between the southeast corner of Section 22 and the Southwest corner of Section 22 and a N-S fence line projected north (which provides the best evidence of the easting of this corner). Set a 2.5" aluminum cap on a 5/8" rebar 24" long, set (6" buried) alongside the roadbed, with Bearing Tree Signs on a Fence post which bears South, 19.8 feet and a power service pole N60°W, 98.9 feet; to the sign.



VICINITY MAP
Section subdivision This Corner



SKETCH OF CORNER



Certification

I, David P. Neeley, 14015 LSI, certify the information shown herein is true and correct.

David P. Neeley
Signature Ground Party Chief
Robert F. Everly

I certify that this Corner Record correctly represents work performed by me or under my direction in compliance with the "Corner Recordation Act" (70-22-101, et seq., M.C.A.)

Robert F. Everly
Signature of Surveyor & Seal

Date: 8-27-02 Reg. No. 9754ES
Employer: EVERLY & ASSOCIATES

Office of Clerk and Recorder, County of DEER LODGE. This "corner record" was filed for record on SEPTEMBER 4, 2002 was noted on the cross-index plat and is assigned page No. 548, in book No. 2

Barbara J. Vaughn
County Official

	Sec. 22		