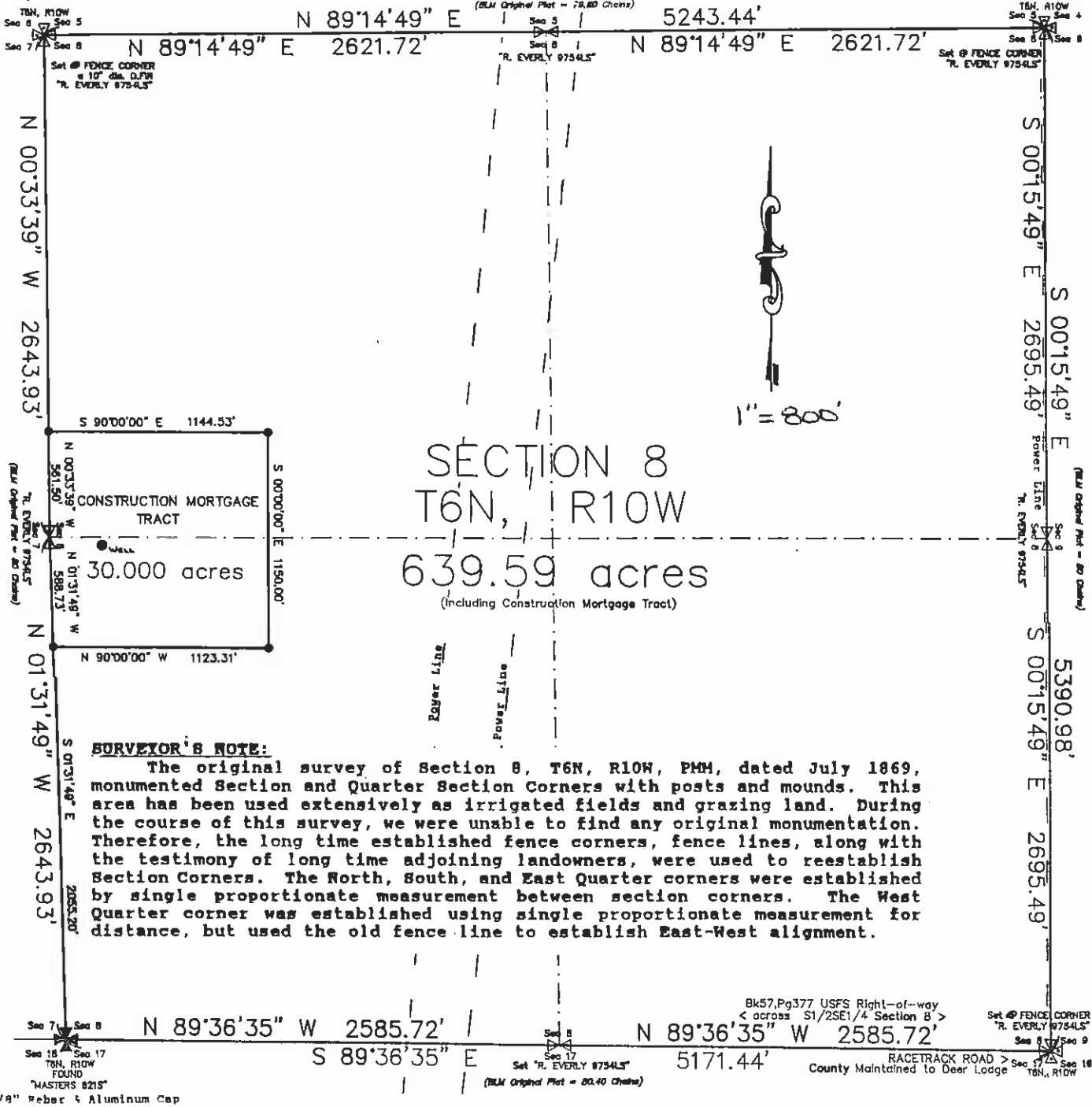


INSTRUCTIONS

1. Original and/or subsequent record used to evaluate the corner position.
2. Description of evidence found, note discrepancies in the record, state method of establishing lost or obliterated corners.
3. Description of monument and accessories set to perpetuate the corner position.
4. Sketch of corner, show all pertinent data which can best be shown in a sketch example, corner marking, topography ties, position of accessories, etc.
5. Certification must be signed and sealed by Land Surveyor registered in the State of Montana.
6. Fill in Cross Index & Section Diagram at bottom of sheet.

CERTIFIED CORNER RECORDATION

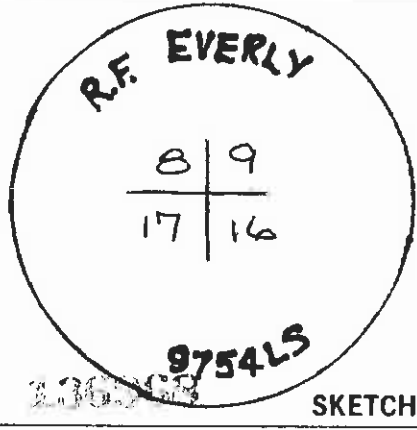
Corner - SE - SECTION 8 T. 6N R. 10W P.M.M. POWELL County



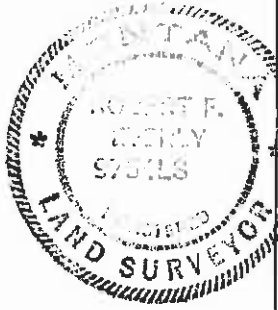
SURVEYOR'S NOTE:

The original survey of Section 8, T6N, R10W, PMM, dated July 1869, monumented Section and Quarter Section Corners with posts and mounds. This area has been used extensively as irrigated fields and grazing land. During the course of this survey, we were unable to find any original monumentation. Therefore, the long time established fence corners, fence lines, along with the testimony of long time adjoining landowners, were used to reestablish Section Corners. The North, South, and East Quarter corners were established by single proportionate measurement between section corners. The West Quarter corner was established using single proportionate measurement for distance, but used the old fence line to establish East-West alignment.

Bk57, Pg377 USFS Right-of-way
< across S1/2SE1/4 Section 8 >



SKETCH OF CORNER



CERTIFICATION

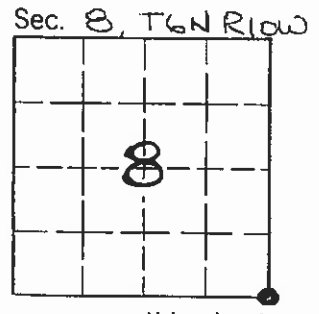
I, ROBERT F. EVERLY
certify the information shown herein is true and correct.
Robert F. Everly
Signature Ground Party Chief

I, ROBERT F. EVERLY
certify that this Corner Record correctly represents work performed by me or under my direction in compliance with the "Corner Recordation Act" (70-22-101, et seq., M.C.A.)
Robert F. Everly
Signature of Surveyor & Seal

Date: 8/6/93 Reg. No. 9754LS
Employer: EVERLY & ASSOCIATES
Butte, Montana

Office of Clerk and Recorder, County of POWELL. This "corner record" was filed for record on August 27, 1993 @ 10:07 A.M. was noted on the cross-index plat and is assigned page No. _____, in book No. _____

Dorothy Benson
County Official



Cross Index No. J-9 T. 6N R. 10W PMM

• - corner this sheet