

**INSTRUCTIONS**

1. Original and/or subsequent record used to evaluate the corner position.
2. Description of evidence found, note discrepancies in the record, state method of establishing lost or obliterated corners.
3. Description of monument and accessories set to perpetuate the corner position.
4. Sketch or corner, show all pertinent data which can best be shown in a sketch example, corner marking, topography ties, position of accessories, etc.
5. Certification must be signed and sealed by Registered Land Surveyor in State of Montana.
6. Fill in Cross Index & Section Diagram at bottom of sheet.

**CERTIFIED CORNER RECORDATION**

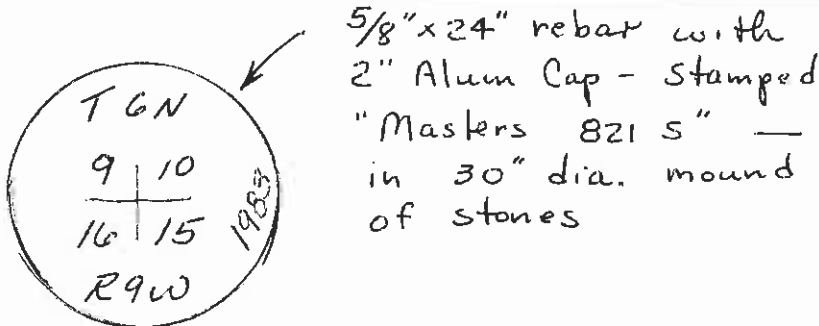
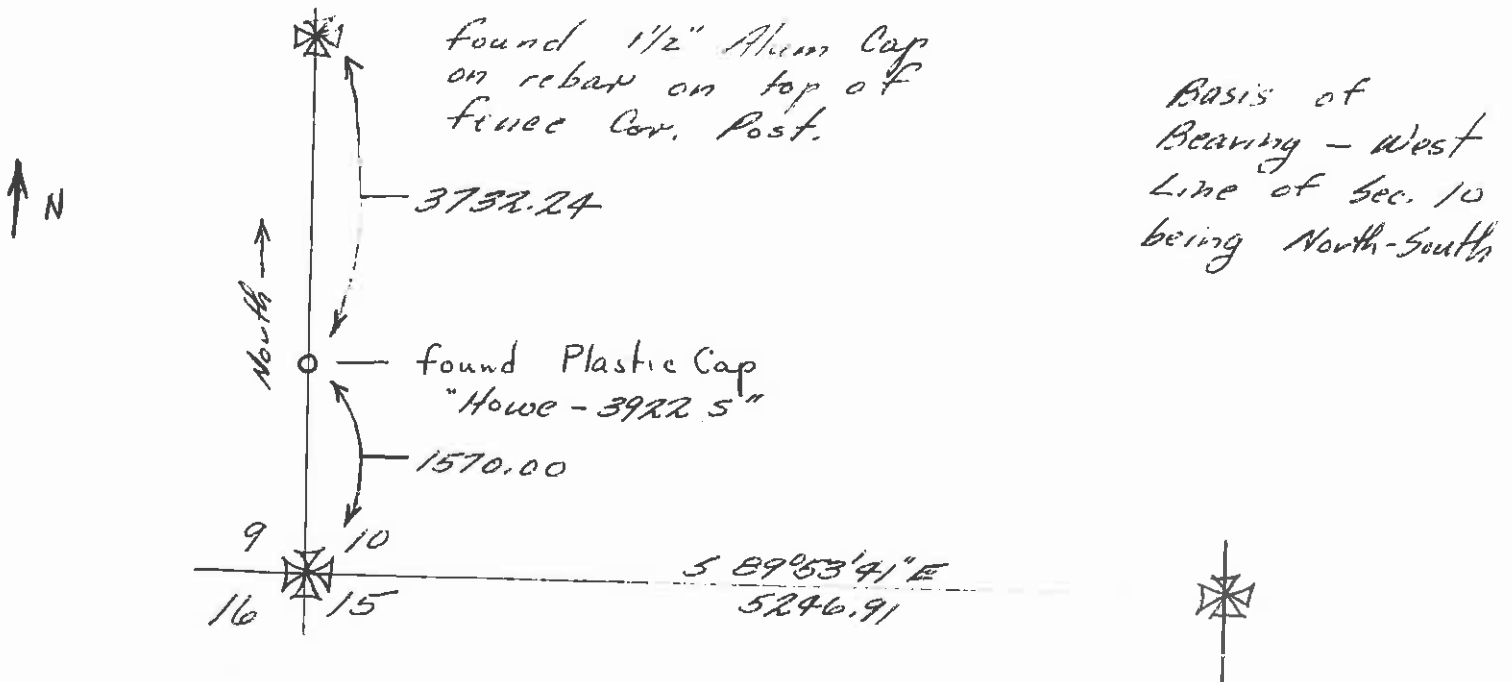
Corner SW Cor - Sec. 10 T. 6N R. 9W P.M.M. Powell County

Orig 1868 field notes — a granite stone 13x10x8 in. with pits marked stone (etc ?) as per instructions.

No Marker or Pits found.

Used found markers set by others on west line of Sec. to establish SW Cor, — fits land calls from orig field notes.

A 5/8" x 24" rebar with 2" Alum Cap in Mound of Stones.



**SKETCH OF CORNER**

**CERTIFICATION**

I, \_\_\_\_\_ certify the information shown herein is true and correct.

Signature Ground Party Chief

I, RAY G. MASTERS

certify that this Corner Record correctly represents work performed by me or under my direction in compliance with the "Corner Recordation Act" (70-22-101, et seq., M.D.A.)

Ray G. Masters  
Signature of Surveyor & Seal

Date: 12-24-83 Reg. No. 821 5

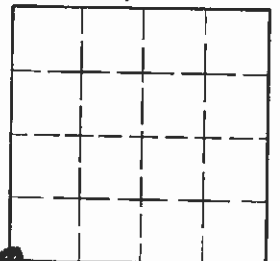
Employer: Self

Office of Clerk and Recorder, County of Powell. This "corner record" was filed for record on the December 29 day of 19 83 @ 3:35 P.M. was noted on the cross-index plat and is assigned page No. \_\_\_\_\_, in book No. \_\_\_\_\_

County Official

Cross Index No. 13-J T. 6N R. 9W P.M.M.

Sec. 10



• - corner this sheet