

**CERTIFIED LAND CORNER RECORDATION**  
(REFERENCE FSM 7153.53)

**DESCRIPTION OF CORNER EVIDENCE FOUND, AND ORIGINAL RECORD (IF KNOWN)**

No monument was found for corner, but two stumps with definite scribing were found in the immediate vicinity of the corner point. Since no record existed as to the relation of these stumps to the original corner, it was necessary to proportion this corner from nearby found corners. It was finally decided to single proportion the corner from found corner 1 mile south and 1/2 mile north. The point selected faces the scribed stumps. See the sketch below.

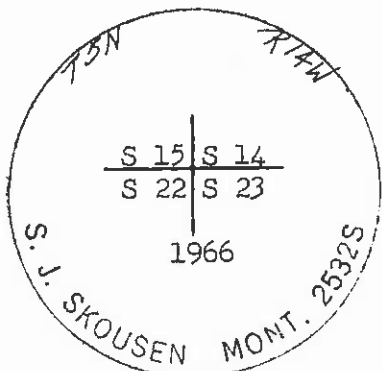
I wrote the Bureau of Land Management and they assured me that I had the proper and only record information for this corner. (Record: "... set a post diagonally, 4 feet long, 3 inches square, with marked stone 12 inches in ground for corner to sections 14, 15, 22, 23 marked R14W T5N sec 14 on NE, sec 15 on NW, sec 22 on SW, and sec 23 on SE faces with 2 notches east and 3 on south, raised a mound of earth around post 2 ft high 4 1/2 ft base and dug a pit 18" square and 12" deep in each of the four sections...")

**DESCRIPTION OF MONUMENT AND ACCESSORIES ESTABLISHED TO PERPETUATE THE ORIGINAL LOCATION OF THIS CORNER:**

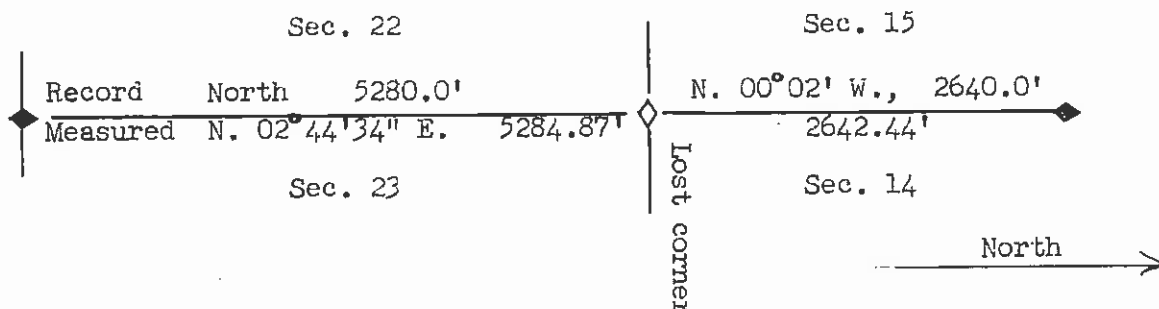
Date of work: October 1966

At the corner point, I set a 2-inch by 30-inch galvanized iron pipe 24 inches in the ground marked as shown at left, from which:

- An 8-inch lodgepole pine bears N. 85° E., and 7.6 feet distant marked "RM" with 54-6 sign attached;
- A 16-inch lodgepole pine bears S. 70° W., 52.6 feet distant, marked "RM."



**SKETCH, WITH COURSE AND DISTANCE TO ADJACENT CORNERS IF DETERMINED IN THIS SURVEY. (MAY SKETCH OR PASTE REPRODUCTION ON REVERSE SIDE.)**



Surveyor's Seal

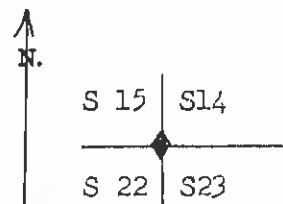
I, .....  
certify that the information shown herein is true and correct.

Signature of Ground Party Chief

I, Stanley J. Skousen  
certify that I have carefully performed or reviewed the work done on the diagrammed corner as reported on this recordation form and approve the same.

Stanley J. Skousen  
Signature of Surveyor

**DIAGRAM OF CORNER:**



◆ = Corner recorded on the sheet

2532 S  
Registration Number

Office of Clerk and Recorder, County of Granite

This "corner record" was filed for record on the 2nd day of June 1967, was noted on the cross-index plat and is

assigned page No. 504, in book No. ....

Agnes M. McDonald  
County Official  
By Maude Echols Deputy  
Cross Index No. T. 5 N. 1 R. 14 W. Mer. W-17