

CERTIFIED LAND CORNER RECORDATION

DESCRIPTION OF CORNER EVIDENCE FOUND, AND ORIGINAL RECORD (IF KNOWN)

S 1/4 CORNER SECTION 24, T5N.,R12W

RECORD - 1982
WILSON CORNER RECORDATION AS FOUND STONE

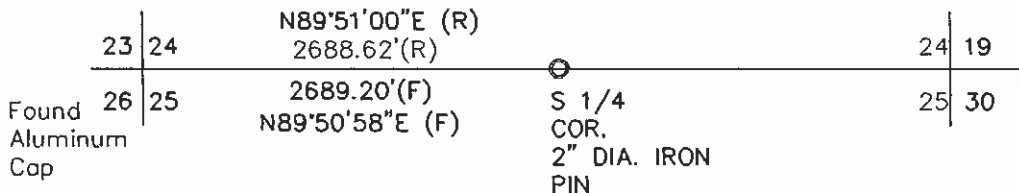
FOUND - 2" DIAMETER IRON PIN WITH FLATHEAD TOP - 1/4 STONE UPSIDE DOWN ALONGSIDE

DESCRIPTION OF MONUMENT AND ACCESSORIES ESTABLISHED
TO PERPETUATE THE ORIGINAL LOCATION OF THIS CORNER:

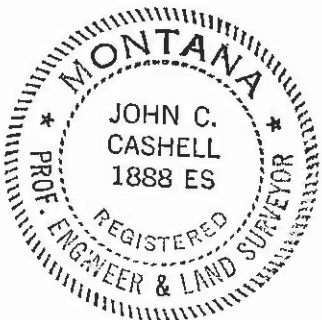
Date of work: SEPT. 6, 1991

THERE IS A TIE FENCE CORNER POST 1.5' NORTH

SKETCH, WITH COURSE AND DISTANCE TO ADJACENT CORNERS IF DETERMINED IN THIS SURVEY.
(MAY SKETCH OR PASTE REPRODUCTION ON REVERSE SIDE)



Surveyor's Seal



CORY PATTERSON

I, _____
certify that the information shown herein is true and correct.

Cory Patterson
Signature of Ground Party Chief

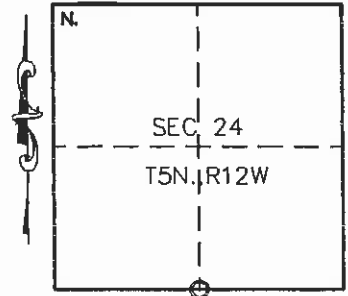
JOHN C. CASHELL

I, _____
certify that I have carefully performed or reviewed the work done on the diagrammed corner as reported on this recordation form and approve the same.

John C. Cashell
Signature of Surveyor

1888ES
Registration Number

DIAGRAM OF CORNER:



○ = Corner recorded on the sheet

Office of Clerk and Recorder, County of DEER LODGE

This 'corner record' was filed for record on the 3RD day of APRIL, 1991, as noted on the cross-index plat an

assigned page No. 431 in book No. 2

Barbara J. Vaughn
County Official

Cross Index No. R-23 T. 5N R. 12W Mer.