

INSTRUCTIONS

1. Original and/or subsequent record used to evaluate the corner position.
2. Description of evidence found, note discrepancies in the record, state method of establishing lost or obliterated corners.
3. Description of monument and accessories set to perpetuate the corner position.
4. Sketch of corner, show all pertinent data which can best be shown in a sketch example, corner marking, topography ties, position of accessories, etc.
5. Certification must be signed and sealed by Land Surveyor registered in the State of Montana.
6. Fill in Cross Index & Section Diagram at bottom of sheet.

CERTIFIED CORNER RECORDATION

Corner Sections 21, 22, 27 & 28 T. 5 N. R. 12 W. P.M.M. Deer Lodge County

ORIGINAL RECORD: (G.L.O.) Not recovered.

SUBSEQUENT RECORD: (1953 B.L.M.)

Set an iron post, 28 ins. long, 2 ins. diam., 12 ins. in the ground to solid rock, supported in a mound of stone, 2 ft. base, to top, with brass cap marked [as shown below] Set a 2x4 ins. white wooden post alongside iron post.

EVIDENCE FOUND:

Found 3 1/4" Brass Cap, 1.45' above ground in large mound of stone, from which:  
 A fir, 5 ins. diam., bears N18°E, 5.2 feet dist.  
 A fir, 8 ins. diam., bears N80°W, 16.6 feet dist.  
 A fir, 5 ins. diam., bears S40°E, 12.0 feet dist.

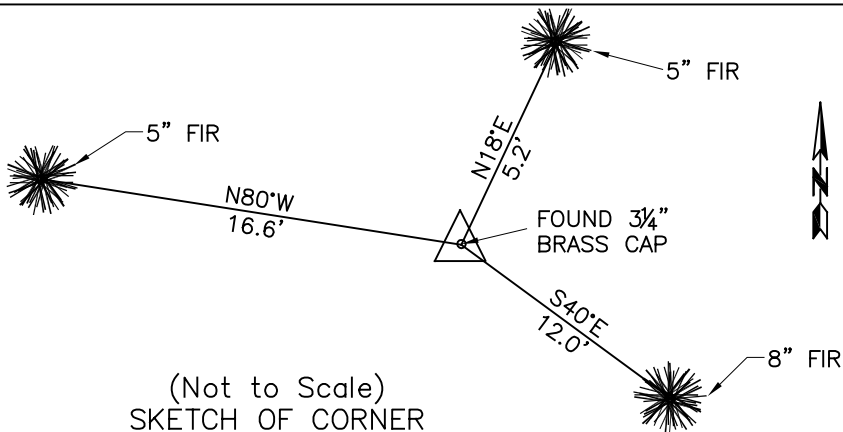
PERPETUATION:

Affixed MARLS tags to BTs.  
 Another mound of stone lies southeast, 6.0 feet dist.

Date of Survey: October, 2009.



NAD 83 coordinates for this corner:  
 Latitude = 46°09'54.20935"N Longitude = 113°05'56.83370"W  
 NOTE: These coordinates are to be used as a search tool only.



CERTIFICATION

I, Steve Cummings  
 certify the information shown herein is true and correct.

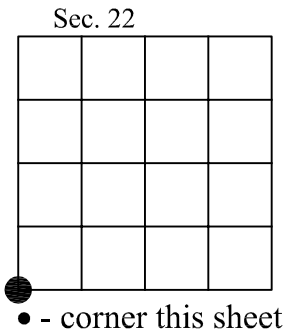
\_\_\_\_\_  
 Signature Ground Party Chief

I, Kurt A. Luebke  
 certify that this Corner Record correctly represents work performed by me or under my direction in compliance with the "Corner Recordation Act" (70-22-101, et seq., M.C.A.)

\_\_\_\_\_  
 Signature of Surveyor & Seal

Date: 10-27-2009 Reg. No. 13237 S

Employer: DJ&A P. C.



Cross Index No. R-13 T. 5 N. R. 12 W. PMM