

110845

CERTIFIED LAND CORNER RECORDATION

DESCRIPTION OF CORNER EVIDENCE FOUND, AND ORIGINAL RECORD (IF KNOWN)

- 1. Corner to Sections 5, 6, 7, 8, T.5N., R.10W. Found: Drill steel at fence corner used as section corner in survey filed at Page 494 of Book 16 of Deeds. (fence N & W) Record: Post with pits and mounds.
2. 1/4 Corner between Section 6 & Section 5 T.5N., R.10W. Found: Shallow pit with low mound to North - remains of charcoal in edge of mound. (fence N & S) Record: Post with pits and mound and charred stake.
3. Corner to Sections 5 & 6, T.5N., R.10W., & Sections 31 & 32 T.5N., R.10W. Found: Fence corner fitting land calls to South but not to North (3 chains out) also fits other corners on this township line. (fences N, S, & Record: Post with pits and mounds.

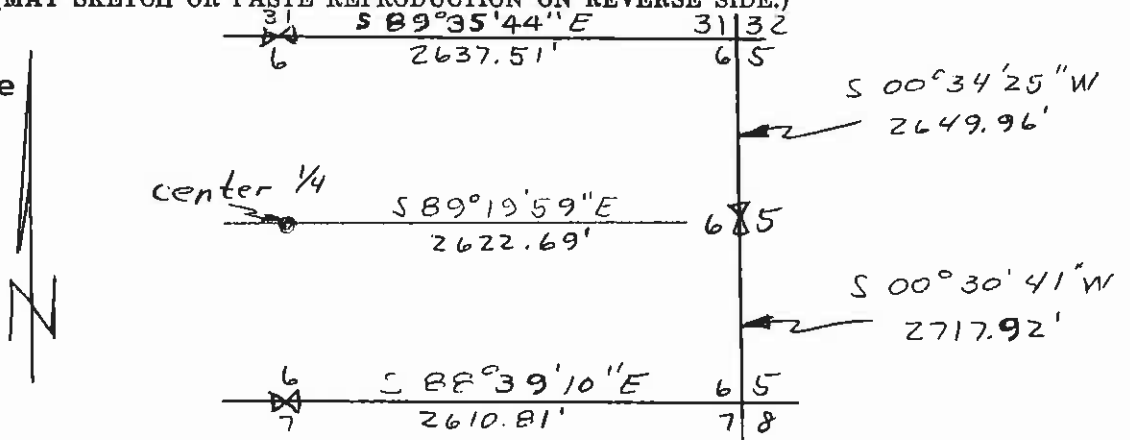
DESCRIPTION OF MONUMENT AND ACCESSORIES ESTABLISHED TO PERPETUATE THE ORIGINAL LOCATION OF THIS CORNER:

Date of work: Dec. 197

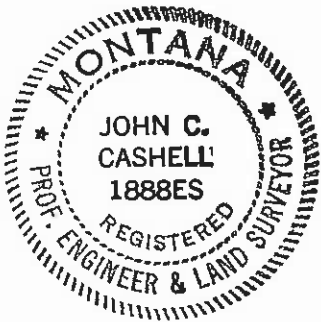
- 1. No further monumentation
2. Set 5/8" x 24" rebar with yellow plastic cap marked "ALPHA ENGRS 1888 ES" and raised mound of stone around the pin.
3. Set 5/8" x 24" rebar with yellow plastic cap marked "ALPHA ENGRS 1888 ES" and raised mound of stone around the pin.

SKETCH, WITH COURSE AND DISTANCE TO ADJACENT CORNERS IF DETERMINED IN THIS SURVEY. (MAY SKETCH OR PASTE REPRODUCTION ON REVERSE SIDE.)

Basis of Bearing is the South Half of the West side of Section 6, T.5N., R.10W., Record N 0-04 W



Surveyor's Seal



I, David M. Albert certify that the information shown herein is true and correct.

Signature of David M. Albert

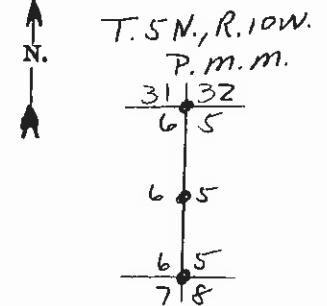
Signature of Ground Party Chief

I, John C. Cashell certify that I have carefully performed or reviewed the work done on the diagrammed corner as reported on this recordation form and approve the same.

Signature of John C. Cashell

Signature of Surveyor

DIAGRAM OF CORNER:



• = Corner recorded on the sheet

1888 ES Registration Number

Office of Clerk and Recorder, County of Deer Lodge

This "corner record" was filed for record on the 31st day of January 1978, was noted on the cross-index plat an assigned page No. 192, in book No. 1

by Tracy Clark Deputy County Official

Cross Index No. A-5-C-5 T. 51N R. 10W E 5