


# CERTIFIED LAND CORNER RECORDATION


## DESCRIPTION OF CORNER EVIDENCE FOUND, AND ORIGINAL RECORD (IF KNOWN)

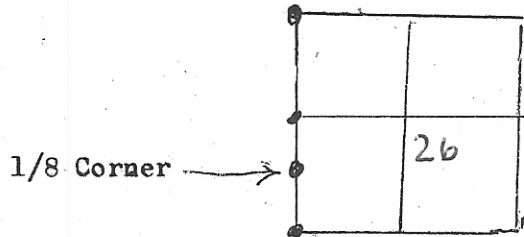
Southwest Corner of Section 26, Township 4 South, Range 51 East of the Montana Principal Meridian found and Identified. Also the West Quarter Corner of said Section found and identified and a line established between them. Then we Measured on the line North 0°10' East 1306.8 feet from the Southwest Corner of said Section 26 and Placed a Monument in the exact location.

## DESCRIPTION OF MONUMENT AND ACCESSORIES ESTABLISHED TO PERPETUATE THE ORIGINAL LOCATION OF THIS CORNER:

The two corners stated above were U.S. Government Brass Cap. Shown below 

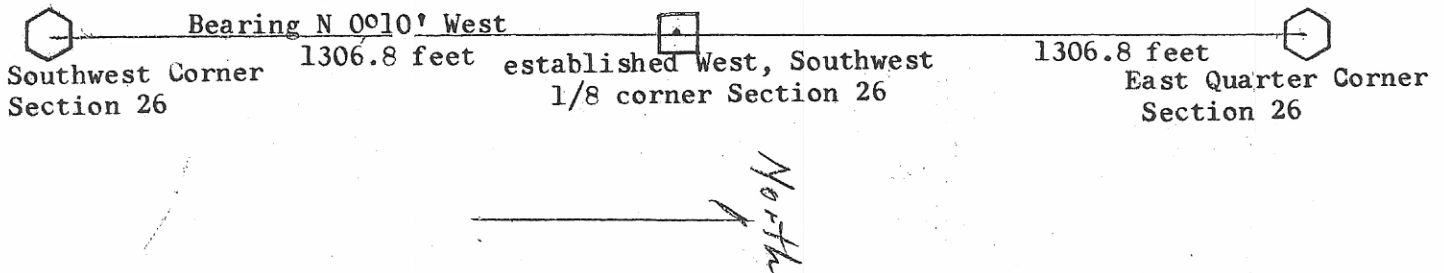
Date of work: Feb. 23, 1983

The reestablished Corner Monument is a 1/2" Rebar with an Aluminum cap marked 2357-S and 1/8, shown below 



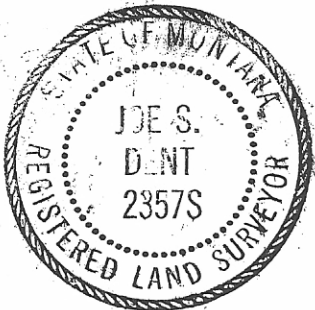
SKETCH, WITH COURSE AND DISTANCE TO ADJACENT CORNERS IF DETERMINED IN THIS SURVEY.  
(MAY SKETCH OR PASTE REPRODUCTION ON REVERSE SIDE.)

General Land Office Map shows 49.60 Chain or 2613.6 feet



### DIAGRAM OF CORNER:

Surveyor's Seal



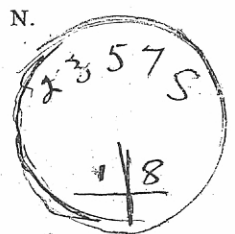
I, Joe S. Dent

certify that the information shown herein is true and correct.

*Joe S. Dent*  
Signature of Ground Party Chief

I, Joe S. Dent, certify that I have carefully performed or reviewed the work done on the diagrammed corner as reported on this recordation form and approve the same.

*Joe S. Dent*  
Signature of Surveyor



= Corner recorded on the sheet

Registration Number

Office of Clerk and Recorder, County of Powder River #106196 2:46 P.M.

This "corner record" was filed for record on the 28 day of March, 1983, was noted on the cross-index plat and is assigned page No. \_\_\_\_\_, in book No. \_\_\_\_\_

*Harold A. Amodeo*  
County Official