

51101

CERTIFIED LAND CORNER RECORDATION

DESCRIPTION OF CORNER EVIDENCE FOUND, AND ORIGINAL RECORD (IF KNOWN)

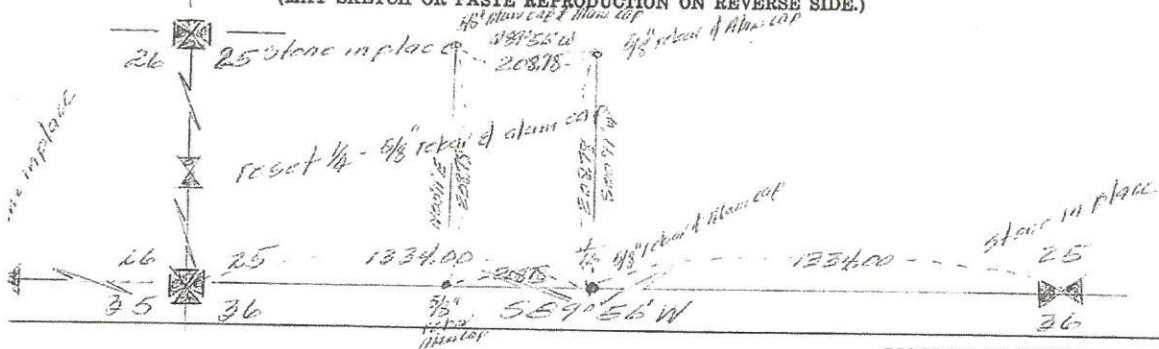
Original record calls for marked stone - Fence corner running south from east-west fence line is only evidence of original location of corner

DESCRIPTION OF MONUMENT AND ACCESSORIES ESTABLISHED TO PERPETUATE THE ORIGINAL LOCATION OF THIS CORNER:

set a 5/8" reinforcing bar with a aluminum survey cap for section corner

Date of work: June 1978

SKETCH, WITH COURSE AND DISTANCE TO ADJACENT CORNERS IF DETERMINED IN THIS SURVEY. (MAY SKETCH OR PASTE REPRODUCTION ON REVERSE SIDE.)



Surveyor's Seal



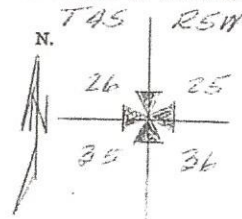
I, _____ certify that the information shown herein is true and correct.

Signature of Ground Party Chief

I, Matt J. Vranish certify that I have carefully performed or reviewed the work done on the diagrammed corner as reported on this recordation form and approve the same.

Matt J. Vranish
Signature of Surveyor

DIAGRAM OF CORNER:



= Corner recorded on the sheet

18255
Registration Number

Office of Clerk and Recorder, County of MADISON

This "corner record" was filed for record on the 5th day of October, 1978, was noted on the cross-index plat and is

assigned page No. 209, in book No. 1

Form 125 - 45227

Lorraine P. Molitor
County Official
Deborah C. Brown Deputy
Cross Index No. V.21 T. 45 R. R.5W Mer. 8