

INSTRUCTIONS

1. Original and/or subsequent record used to evaluate the corner position.
2. Description of evidence found, note discrepancies in the record, state method of establishing lost or obliterated corners.
3. Description of monument and accessories set to perpetuate the corner position.
4. Sketch of corner, show all pertinent data which can best be shown in a sketch example, corner marking, topography ties, position of accessories, etc.
5. Certification must be signed and sealed by Land Surveyor registered in the State of Montana.
6. Fill in Cross Index & Section Diagram at bottom of sheet.

## CERTIFIED CORNER RECORDATION

Corner: NE Cor. Sec. 34      T. 4 S.      R. 5 W.      P. M.      Madison County

**Original Record:** G.L.O. Surveyed by John S. Corbett, 1869. Set a granite stone 17X9X7 in. for corner to sections 26, 27, 34 & 35 pits and mound as per instructions.

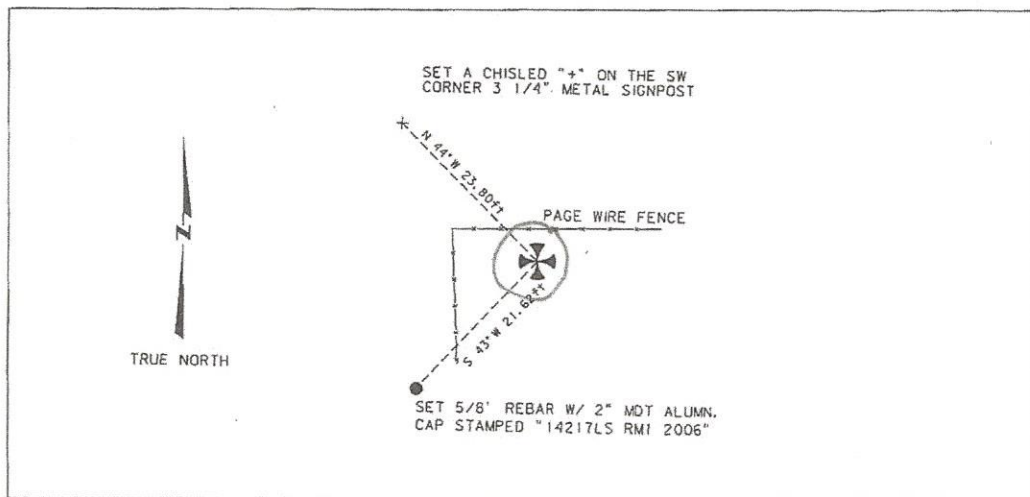
**Subsequent Record:** Matt J. Vranish C.C.R., 1972. Found no evidence of corner. Used data from State of Montana Highway Department construction plans showing ties to section corner. Set 5/8" reinforcing rod 20 inches long 4" below surface of ground. set a steel post along side for witness.

Debra C. Anderson Certificate of Survey #1379, 1999. Fd 3" ACAP flush marked for sections 27, 26, 34, 35 T4S, R5W DOH 1992 5606S. About 17' East of a fence corner.

Dennis L. Foreman Certificate of Survey No. 1469, 2001. 26, 27, 34, 35 FND AL CAP SET 3" MDOH AL CAP

**Found 2006:** 5/8" rebar and 3 1/4" Aluminum Monument set by Montana Department of Highways. See sketch below.

**Set 2006:** Set two references as shown.



|  |  |
|--|--|
|  | <p style="text-align: center;"><b>CERTIFICATION</b></p> <p>I, _____, certify the information shown herein is true and correct.</p> <p style="text-align: center;">Signature of Land Surveyor</p> <p>I, <u>John William Hoechst</u>, certify that this Corner Record correctly represents work performed by me or my assistants in compliance with the Corner Recordation Act, 1922-1901, 1923 sec. 1, M.C.A.</p> <p style="text-align: center;">Signature of Surveyor &amp; Seal</p> <p>Date: <u>10-25-06</u> Reg. No. <u>14217LS</u></p> <p>Employer: <u>Montana Department of Transportation</u></p> |
|--|--|

116739 BOOK: 9    CORNERS    PAGE: 229    Pages: 0 2 . This "corner"  
 STATE OF MONTANA MADISON COUNTY  
 RECORDED: 10/30/2006 9:50 KOI: CR  
 Peggy Kaatz CLERK AND RECORDER  
 FEE: \$0.00    BY: [Signature]    )    , in  
 TO: FILED \_\_\_\_\_ )  
County Official

Sec. 34

|  |  |  |  |
|--|--|--|--|
|  |  |  |  |
|  |  |  |  |
|  |  |  |  |
|  |  |  |  |

Cross Index No. V-17    T. 4 S. R. 5 W., PM

\* Corner this sheet

CERTIFIED LAND CORNER RECORDATION

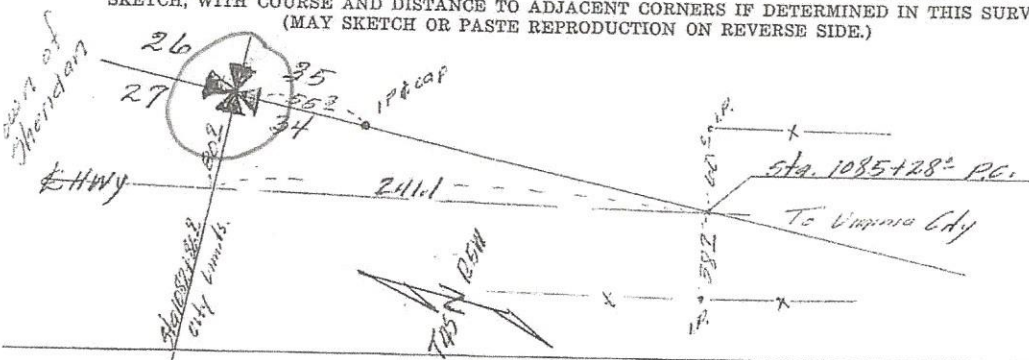
DESCRIPTION OF CORNER EVIDENCE FOUND, AND ORIGINAL RECORD (IF KNOWN)

Found no evidence of corner. Used data from state of Montana highway department construction plans showing ties to the section corner.

DESCRIPTION OF MONUMENT AND ACCESSORIES ESTABLISHED TO PERPETUATE THE ORIGINAL LOCATION OF THIS CORNER:

Set 5/8" reinforcing rod 20 inches long 4" below surface of ground. Set a steel post along side for witness Date of work: 6-71

SKETCH, WITH COURSE AND DISTANCE TO ADJACENT CORNERS IF DETERMINED IN THIS SURVEY. (MAY SKETCH OR PASTE REPRODUCTION ON REVERSE SIDE.)



Surveyor's Seal



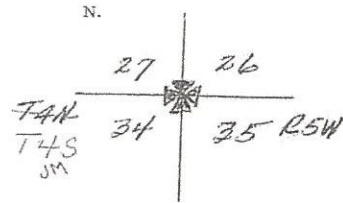
I, Matt J. Vranish certify that the information shown herein is true and correct.

Signature of Ground Party Chief

I, Matt J. Vranish certify that I have carefully performed or reviewed the work done on the diagrammed corner as reported on this recordation form and approve the same.

Signature of Surveyor

DIAGRAM OF CORNER:



= Corner recorded on the sheet

1825.9 Registration Number

Office of Clerk and Recorder, County of MADISON

This "corner record" was filed for record on the 30th day of March 1972, was noted on the cross-index plat and is assigned page No. 82, in book No. 1

Signature of County Official

Cross Index No. V 17 T. 4 S. R. 5 W. Mer.