

CERTIFIED CORNER RECORDATION

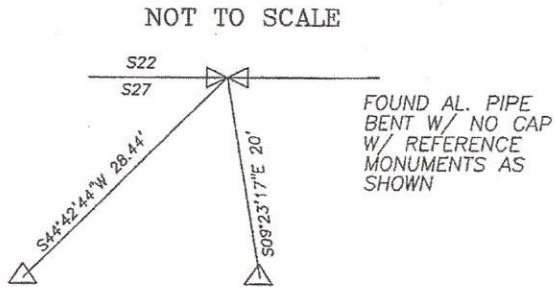
Corner N1/4 SECTION 27 T. 4 S R. 5 W P.M.M. MADISON County

CERTIFICATE OF SURVEY BK. 2, PG. 220-BA
SHOWS N/14 SECTION 27 WITH REFERENCE MONUMENTS

2006 Evidence
FOUND BENT ALUMINUM PIPE WITH NO CAP WITH TWO ORANGE PLASTIC CAP REFERENCE MONUMENTS

PERPETUATION
NOTHING DONE TO PERPETUATE THE LOCATION OF THE CORNER

NOTE: C.O.S. BK. 2, PG. 220-BA INCORECTLY HAD THE BEARINGS AND DISTANCES TO THE R.M.'S ON THE OPPISITE R.M.



NORTH
SKETCH OF CORNER

CERTIFICATION

I, _____ certify the information shown herein is true and correct.

Signature Ground Surveyor

I, ERLAND R. GENDREAU certify that this Corner Record correctly represents work performed by me or under my direction in compliance with the Survey Registration Act (70-180-101) at 132 Reg. No. _____

Signature of Surveyor

Date: 4/10/07 Reg. No. 132 **CENSURED SURVEYOR**

Company: G & E ENG. & SURV.

Office of Clerk and Recorder, County of MADISON. This "corner

119619 BOOK: 9 CORNERS PAGE: 244 Pages: 0
STATE OF MONTANA MADISON COUNTY
RECORDED: 04/24/2007 9:35 KOI: CR
Peggy Kaatz CLERK AND RECORDER
BY: [Signature]
FEE: \$0.00
TO: FILED

Sec. 27

	●	

Cross Index No. _____ T. _____ R. _____ PMM

Adopted July 1, 1981, Montana Board of Professional Engineers & Land Surveyors

● corner this sheet

CERTIFIED CORNER RECORDATION

Corner $\frac{1}{4}$ $\frac{S22}{S27}$ T. 4 S. R. 5 W. P.M.M. Madison County

1869 Original GLO record by John S. Corbett:
 "Set a Granite stone 16x8x6 In. for 1/4 Sec Cor. pits and mound"

1985 record by David E. Bowman:
 "Original corner not found. Set a 5/8"x30" iron pin with 2" aluminum cap at a position arrived at using the Plat for the Town of Sheridan and comparing it to the positions of other monuments in this area.
 Corner position is on the approximate center line of Carey Lane."

1992 remonumentation by S. R. Smith:
 Found a 1/2 inch diam. rebar, 24 inches long, with aluminum cap, 2 inches diam., laying alongside, marking illegible.
 Set aluminum pipe, 2 1/2 ins. diam., 30 ins. long, 33 ins. in the ground, 3 inches below the road surface of Carey Lane, with M.D.O.H. aluminum cap, 3 1/4 inch diam., marked as shown, from which:
 Set a witness post with M.D.O.H. sticker attached, which bears South, 20.35 ft.
 Set an aluminum nail on gate fence post, 1 ft. above ground, which bears S. 55° W., 41.37 ft.
 Set an aluminum nail on fence post, NE side, 1 ft. above ground, which bears S. 56° E., 30.35 ft.
 Buried existing monument inside aluminum pipe.

Refer to Certificate of Survey filed in conjunction with this corner recordation for ties to other section controlling corners in this area.

Measurements to reference objects were made with a Silva hand compass (declination 16 E.) and a steel tape. Distances are reduced to horizontal unless otherwise noted.

SKETCH OF CORNER

CERTIFICATION

I, S. R. Smith
 certify the information shown herein is true and correct.
S. R. Smith
 Signature Ground Party Chief

I, S. R. Smith
 certify that this Corner Record correctly represents work performed by me or under my direction in compliance with the "Corner Recordation Act" (70-22-101; et seq., M.C.A.)
S. R. Smith
 Signature of Surveyor & Seal

Date: 7/25/92 Reg. No. 4740S
 Employer: Smith Surveying

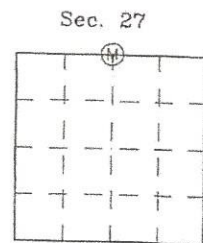
Office of Clerk and Recorder, County of Madison. This "corner record" was filed for record on FEBRUARY 13, 1997 AT 9:59 A.M. was noted on the cross-index plat and is assigned page No. 40, in book No. 6

Prop. Smith
 County Official

Cross Index No. 060167 *KW* R-15 T. 4 S. R. 5 W. P.M.M.

Adopted July 1, 1981, Montana Board of Professional Engineers & Land Surveyors

COPY \$.50



(M) corner this sheet