

INSTRUCTIONS

1. Original and/or subsequent record used to evaluate the corner position.
2. Description of evidence found, note discrepancies in the record, state method of establishing lost or obliterated corners.
3. Description of monument and accessories set to perpetuate the corner position.
4. Sketch of corner, show all pertinent data which can best be shown in a sketch example, corner marking, topography ties, position of accessories, etc.
5. Certification must be signed and sealed by Land Surveyor registered in the State of Montana.
6. Fill in Cross Index & Section Diagram at bottom of sheet.

CERTIFIED CORNER RECORDATION

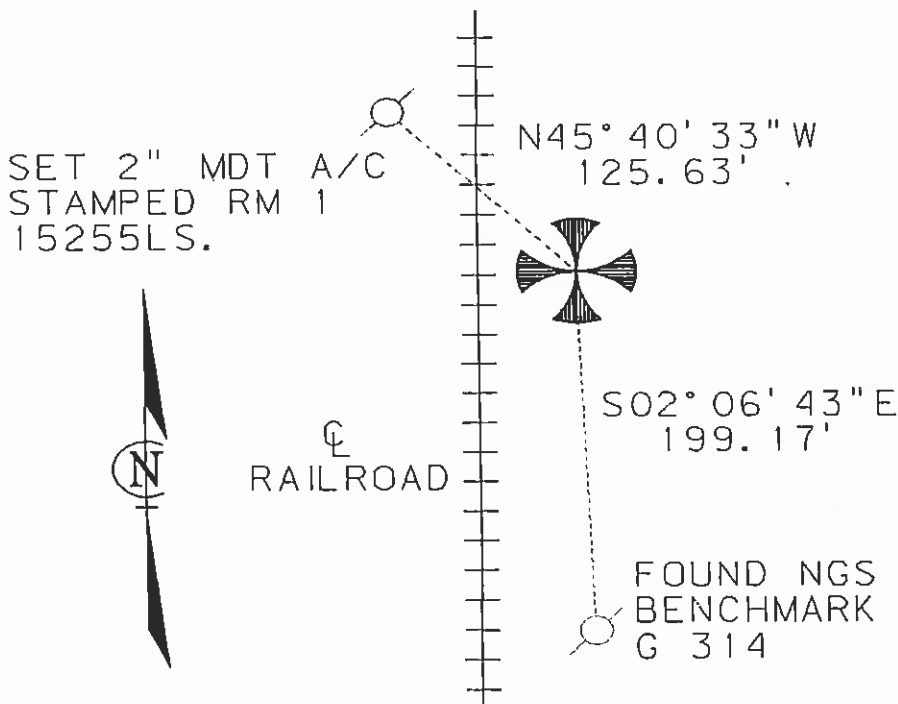
NW Cor Sec. 24(#101) T. 4 N., R. 10 W., P.M. of Montana. Deer Lodge County

Original Record GLO notes for Township 4 North, Range 10 West, P.M. of Montana – Set cor. to sec. 13. 14. 23. 24. a post in mound of earth with pits to as per instructions.

Subsequent Record Nothing found, reestablished from Railroad Right of Way ties. Set a 24" rebar with aluminum cap marked for corner. Per John C. Cashell 1888ES dated 11/30/78 and recorded in CCR Book 1 of Page 218, Deer Lodge County Recorders Office. Same as shown on COS 343-A, COS 59-A, and COS 205-D.

Evidence Found Found a 1 1/4" aluminum cap stamped for the corner.

Set 2005 Set and tied references as shown below;



Basis of Bearing is State Plane Coordinates, NAD83-1999, Montana Zone 2500.

<p>SKETCH OF CORNER</p>	<p style="text-align: center;">CERTIFICATION</p> <p>I, <u>Dana D. Bauer</u> certify the information shown herein is true and correct.</p> <p style="text-align: center;"><i>Dana Bauer</i> Signature of Ground Party Chief</p> <p>I, <u>William D. Weber Jr., PLS</u> certify that this Corner Record correctly represents work performed by me or under my direction in compliance with the "Corner Recordation Act" (70-22-101). <u>WILLIAM D. WEBER JR.</u> Signature of Surveyor & Seal 15255 LS</p> <p>Date: <u>3/7/05</u> Reg. No. <u>15255</u> Employer: <u>MDT</u></p>
--------------------------------	---

Office of Clerk and Recorder, County of DEER LODGE. This "corner record" was filed for record on MARCH 24, 2005 was noted on the cross-index plat, and is assigned Page No. 48, in Book No. 3.

Barbara J. Laughlin, DEPUTY
County Official

Sec. 24

● — Corner this sheet

Cross Index No. N-21 T. 4 N., R. 10 W., PM of Montana